



Achieve your potential.

**Your
educational
resource!**

HVAC University Learning Center

Driving Ventilation Knowledge™

GREENHECK
Building Value in Air.



HVAC University Learning Center

Driving Ventilation Knowledge™

Greenheck's HVAC University Learning Center is back to school with **Dedicated Outdoor Air Systems (DOAS)**.

School may be out for the summer, but Greenheck is on the move to continually educate our engineers, contractors, and customer base on the importance of indoor air quality, especially within our schools. Greenheck's comprehensive line of DOAS units, including models from 500 to 18,000 cfm and 3 to 70 tons of packaged cooling, can meet a wide range of heating, cooling, dehumidification, and ventilation requirements.

For more information, contact your nearby Greenheck representative.

Greenheck's HVAC University Mobile Learning Center contains interactive demonstrations on energy recovery, low sound condenser fans, web user interface for remote monitoring and control, and an operable unit showcasing energy saving controls for outdoor air applications. Come see how it all works at a convenient location. Talk to our knowledgeable product experts. Train your staff.

GREENHECK
Building Value in Air.

FOR YOUR SAFETY:

- Outdoor learning environment allows for social distancing.
- Displays and touch points are disinfected between visits.
- Drivers and presenters follow all state and local guidelines regarding masking.

New Featured Products



Achieve your potential.

RV-10

Model RV-10 is the latest addition to Greenheck's line of rooftop ventilation equipment for both partial recirculation and 100% outside air systems. Ideal for applications requiring a lower CFM range and a smaller footprint, model RV-10 offers airflows from 500 to 2,500 cfm, 3 to 7 tons of packaged DX cooling, and 75 to 200 mbh of indirect gas-fired heating. An electric heat option is also available.



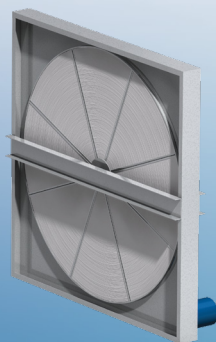
Heat-Cool Only Control

The heat-cool only control offering is designed to allow third-party control of a packaged direct expansion (DX), split DX with remote condensers, heat pump, or indirect gas heat, while maintaining the safety of the refrigeration system and heating devices. The heat-cool only controller is factory-installed and factory-commissioned.



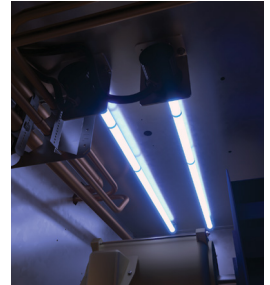
Total Energy Recovery Wheels

The RVE housing provides the option for a total enthalpy recovery wheel technology that provides significant energy savings with an average 70-80% effectiveness. The RVE has an option for a polymer energy wheel embedded with silica gel desiccant or an option for an aluminum energy wheel with a molecular sieve desiccant applied.



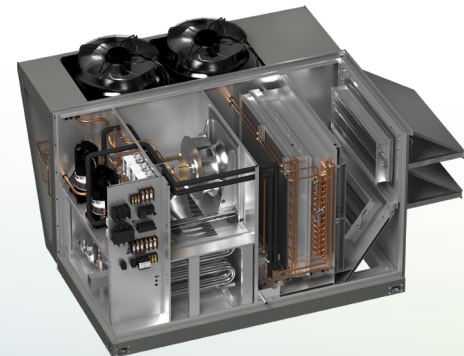
Electronic Air Cleaners

In addition to increased ventilation rates and filtration efficiency, electronic air cleaners are available as an additive technology to help mitigate the spread of airborne respiratory droplets in commercial and educational buildings. The industry has focused on two particular types of electronic air cleaners: ultraviolet germicidal irradiation (UVGI) and needlepoint bipolar ionization (NPBI®). Greenheck models RV and RVE offer both.



Air-Source Heat Pump (ASHP)

This heating and cooling option is available from 5-30 tons and offers high efficiency with the heat pump operation, inverter compressors (standard feature) and modulating head pressure with a lead EC motor (standard feature). ASHPs are refrigeration systems that provide both cooling and heating. A reversing valve changes the direction of refrigerant flow, switching the system from cooling mode to heating mode. Supplemental and back-up heating options are available with the ASHP on the RV and RVE.



Make sure Greenheck's traveling HVAC University doesn't pass you by!

FOR MORE INFORMATION ON GREENHECK PRODUCTS FOR SCHOOLS, VISIT:

www.greenheck.com/resources/building-types/schools

 **GREENHECK**
Building Value in Air.

**HVAC University
Learning Center**

Driving Ventilation Knowledge™

greenheck.com