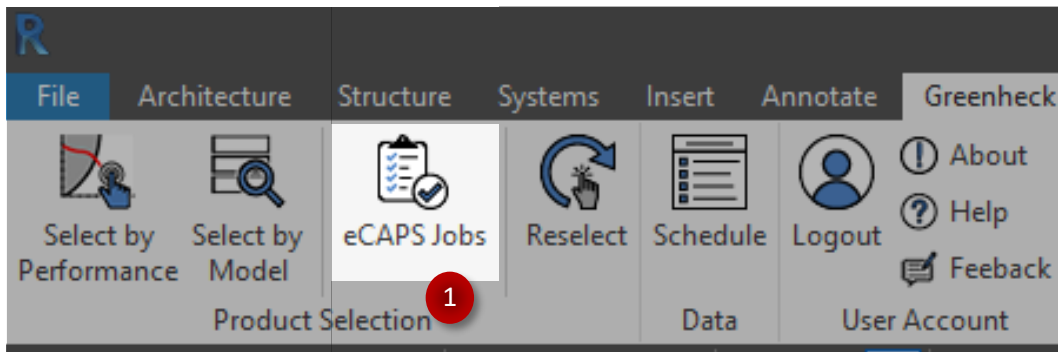


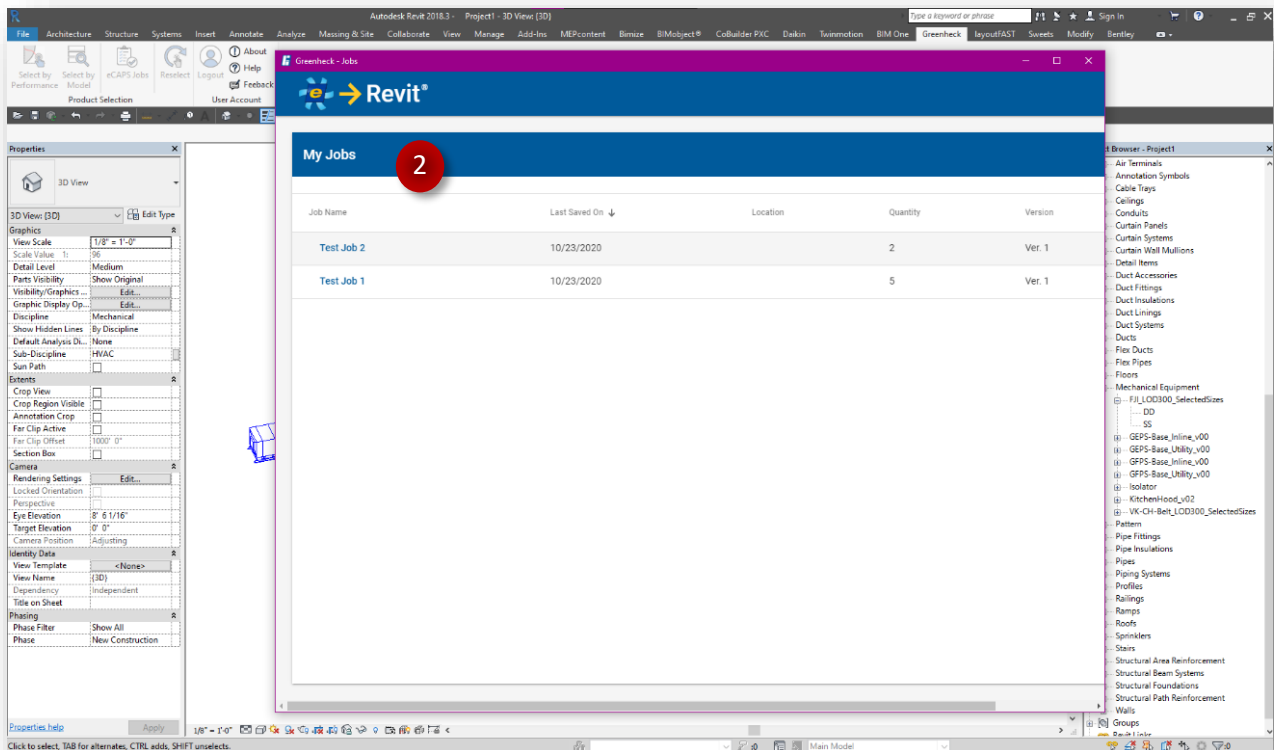
## GREENHECK eCAPS BRIDGE FOR REVIT

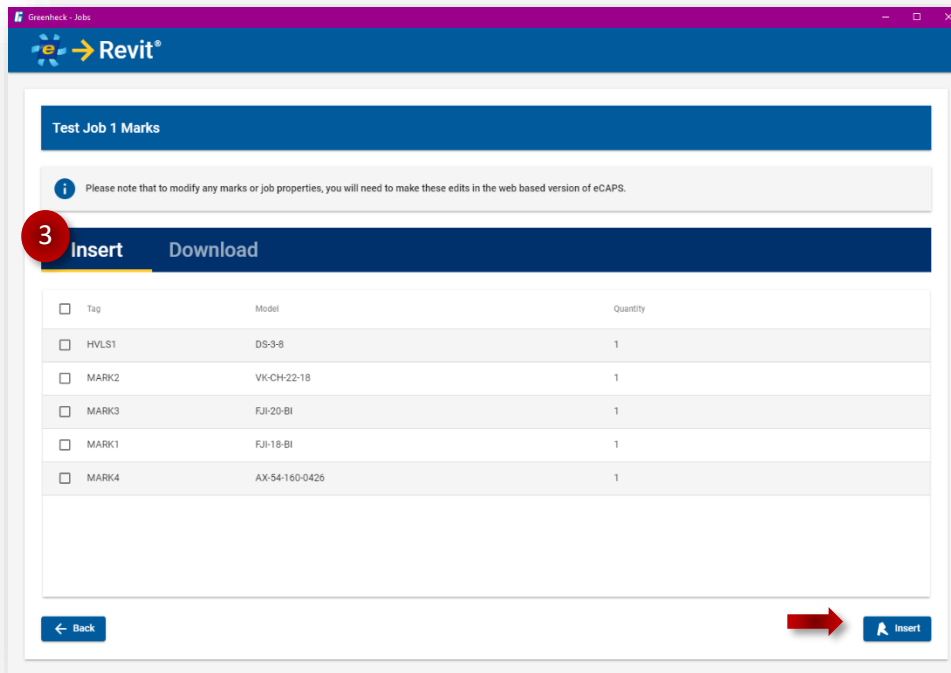
### Using the 'eCAPS Jobs' button

- The eCAPS Jobs button grants access to product selections made to saved jobs on the users eCAPS account.



- Once logged in to the add-in, click on the 'eCAPS Jobs' button on the Greenheck tab to launch the Jobs screen. The user's saved jobs will automatically appear here.
- Select a Job name to view the selections saved to it.





On the **Insert** tab, use the checkboxes to determine which selections to import (LOD 300) into your active Revit project. Click the Insert button on the bottom right.

On the **Download** tab, use the checkboxes to determine which selections to download (LOD 300) to your PC. Click the download button on the bottom right.

