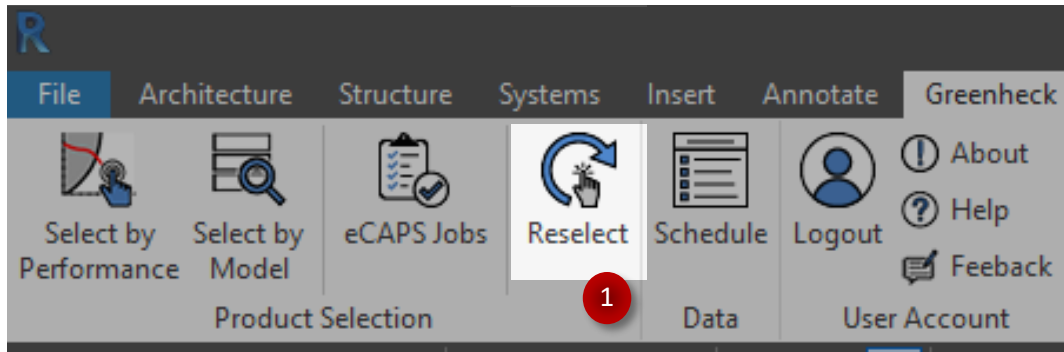


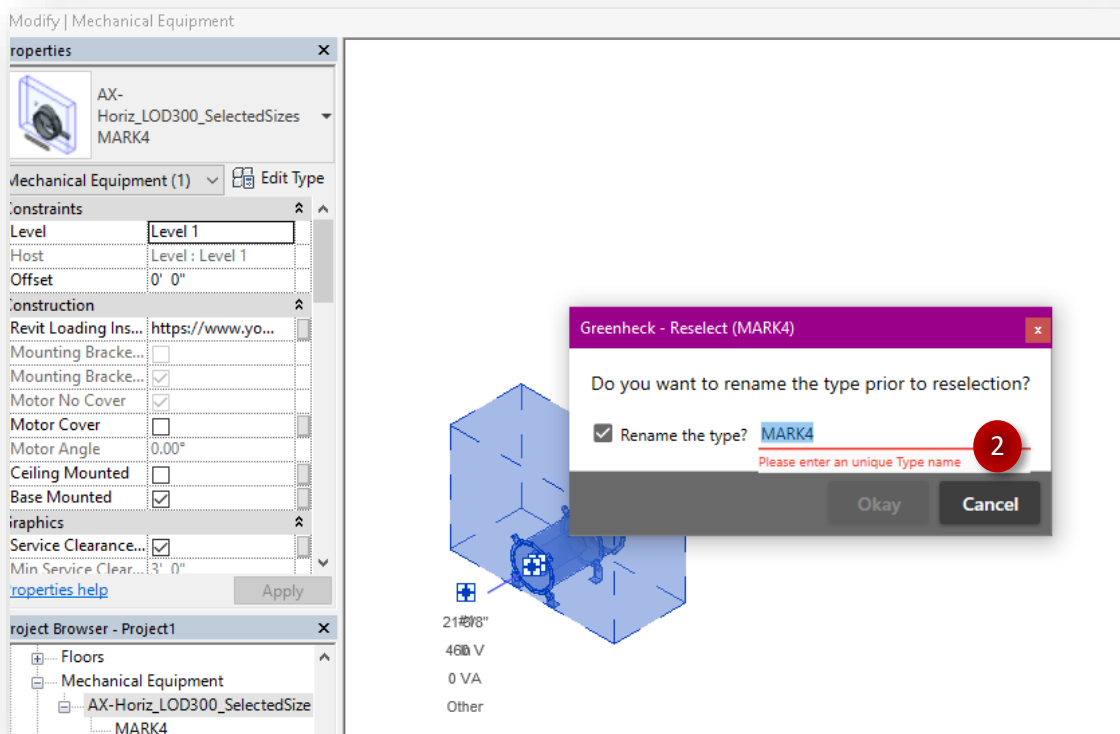
GREENHECK eCAPS BRIDGE FOR REVIT

Using the 'Reselect' button

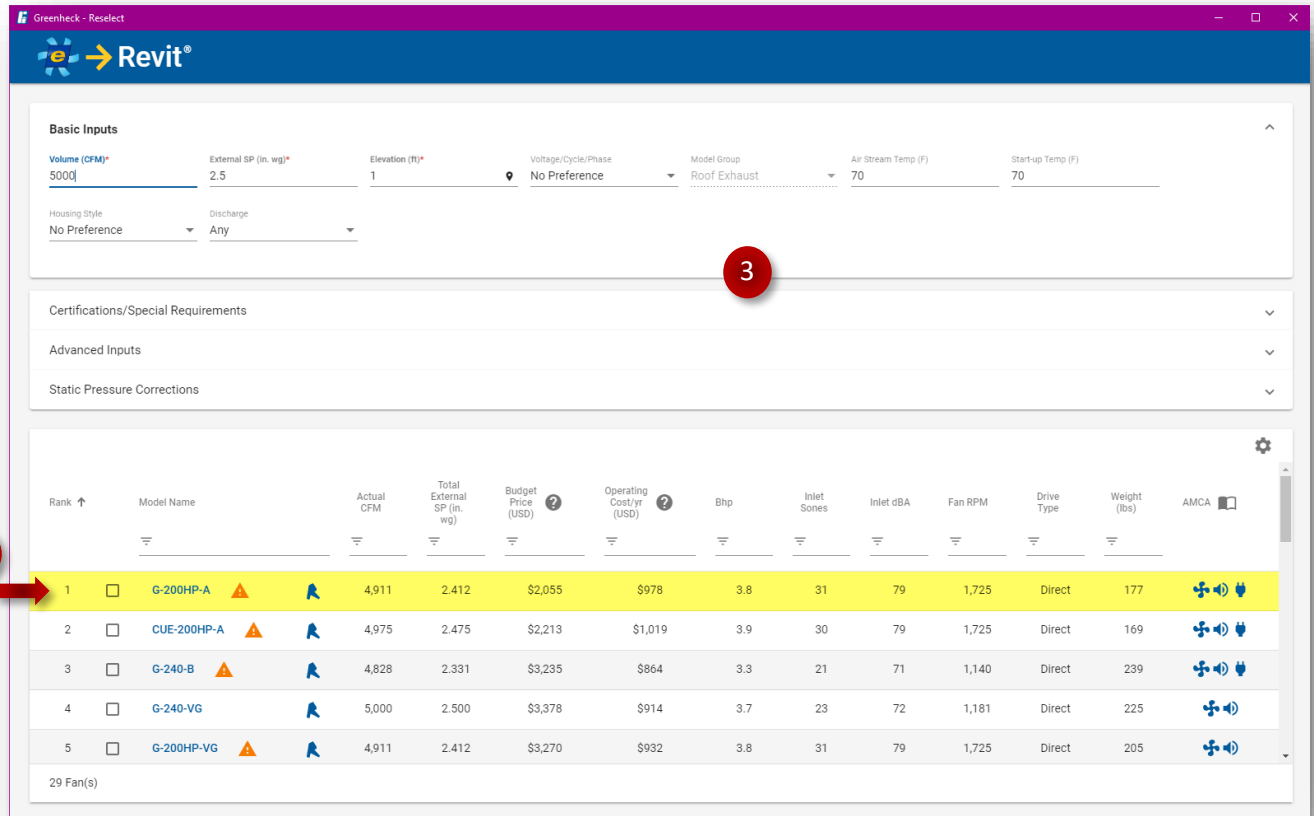
- The Reselect button allows users to rapidly make modifications to selected LOD300 families in the Revit project.



- The Reselect button is deactivated by default and automatically activates when a reselectable Greenheck LOD 300 family is selected in the Revit project.
- Clicking on 'Reselect' first prompts the user to rename the selection. *Renaming at this point allows the user to avoid overriding the original selection with the new version (assuming the user wants the new selection to bear the same name) once it is inserted into the Revit project.*



- Hitting the 'Okay' button bring sup the election screen. The user inputs from the original selection will be automatically filled in, and the original selection will be highlighted in the grid.
- From here, the user can make the desired changes for the reselection and proceed to inert or download the new/modified selection.



Basic Inputs

Volume (CFM)*: 5000 | External SP (in. wg)*: 2.5 | Elevation (ft)*: 1 | Voltage/Cycle/Phase: No Preference | Model Group: Roof Exhaust | Air Stream Temp (F): 70 | Start-up Temp (F): 70

Housing Style: No Preference | Discharge: Any

Table:

Rank ↑	Model Name	Actual CFM	Total External SP (in. wg)	Budget Price (USD)	Operating Cost/Yr (USD)	Bhp	Inlet Sones	Inlet dBA	Fan RPM	Drive Type	Weight (lbs)	AMCA
1	G-200HP-A	4,911	2.412	\$2,055	\$978	3.8	31	79	1,725	Direct	177	
2	CUE-200HP-A	4,975	2.475	\$2,213	\$1,019	3.9	30	79	1,725	Direct	169	
3	G-240-B	4,828	2.331	\$3,235	\$864	3.3	21	71	1,140	Direct	239	
4	G-240-VG	5,000	2.500	\$3,378	\$914	3.7	23	72	1,181	Direct	225	
5	G-200HP-VG	4,911	2.412	\$3,270	\$932	3.8	31	79	1,725	Direct	205	

29 Fan(s)