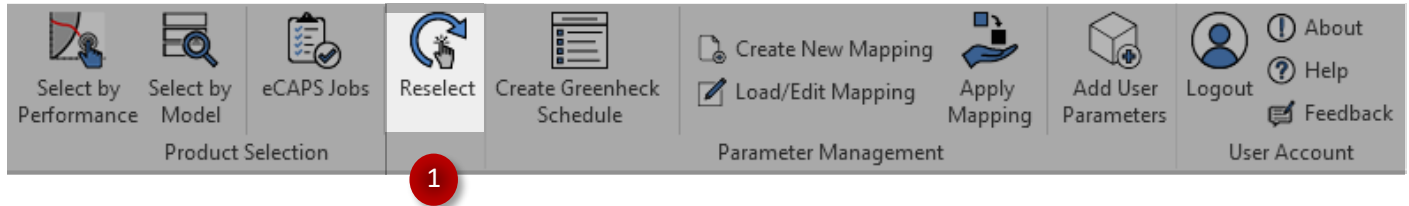


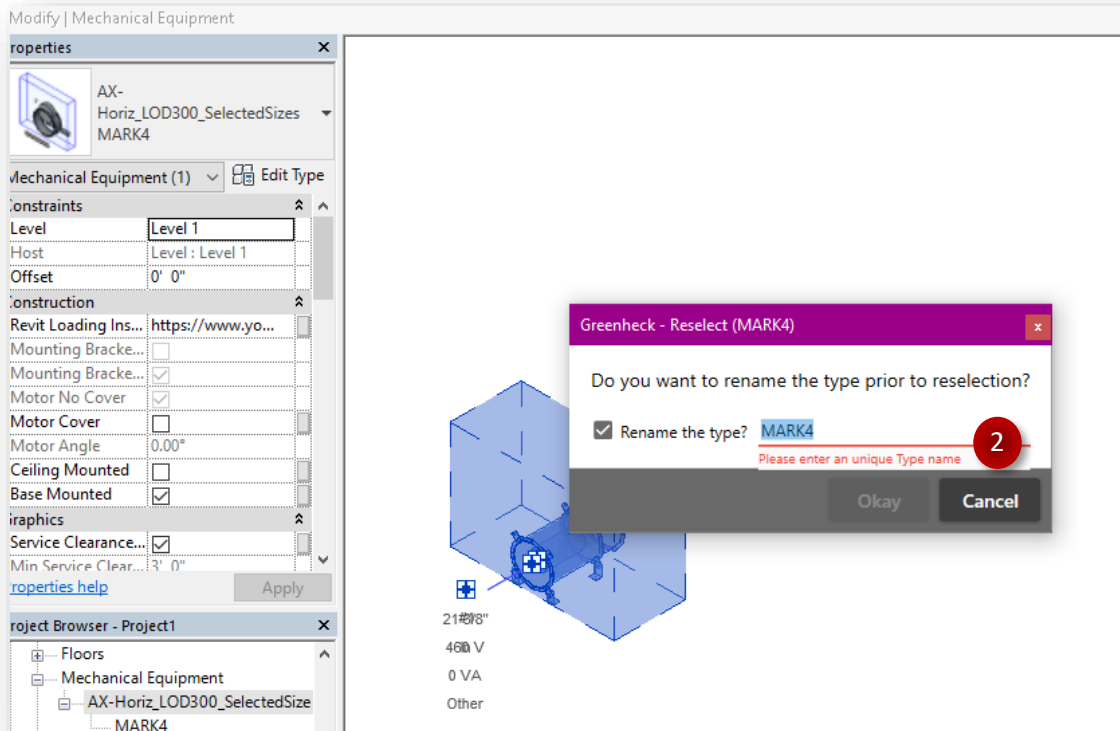
## GREENHECK eCAPS BRIDGE FOR REVIT

### Using the 'Reselect' button

- The Reselect button allows users to rapidly make modifications to selected LOD300 families in the Revit project.

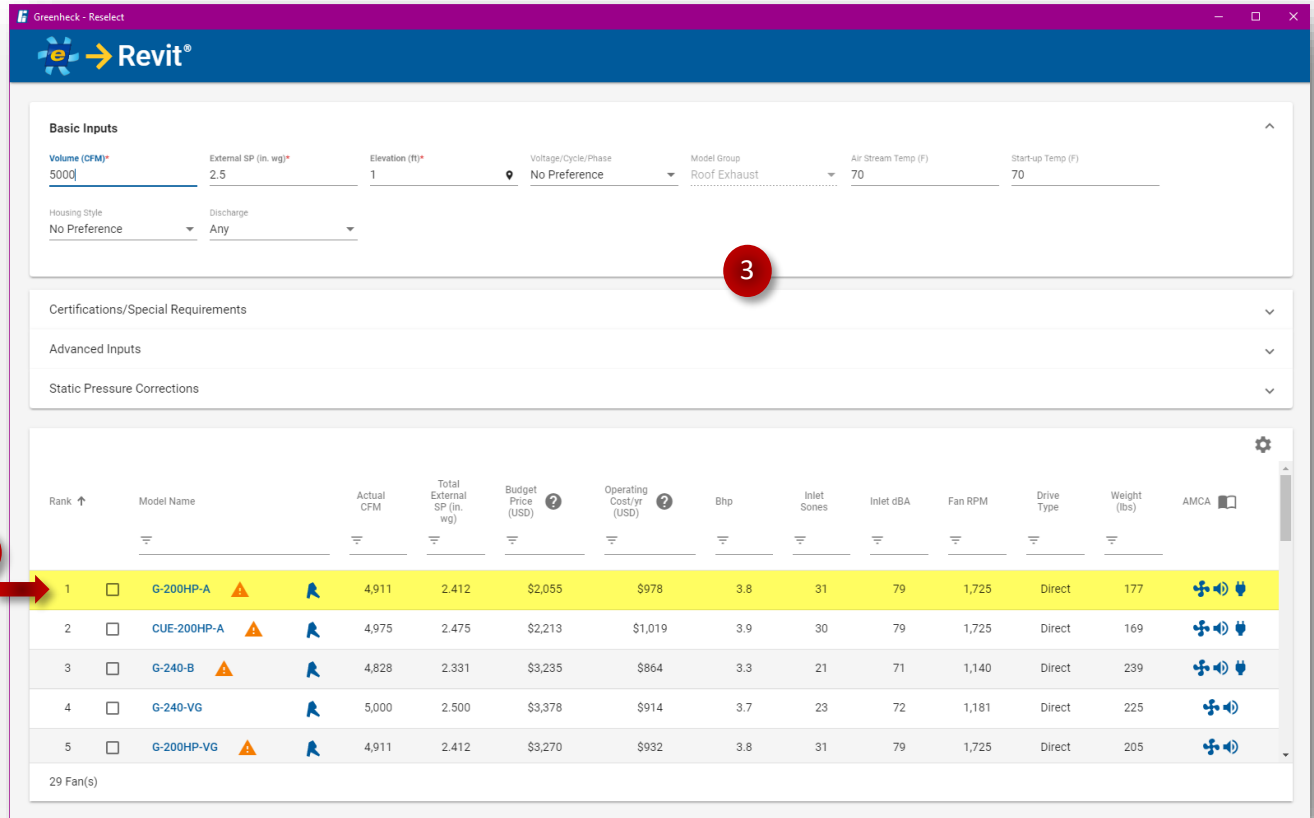


- The Reselect button is deactivated by default and automatically activates when a reselectable Greenheck LOD 300 family is selected in the Revit project.
- Clicking on 'Reselect' first prompts the user to rename the selection. *Renaming at this point allows the user to avoid overriding the original selection with the new version (assuming the user wants the new selection to bear the same name) once it is inserted into the Revit project.*



- Hitting the 'Okay' button brings up the selection screen. The user inputs from the original selection will be automatically filled in, and the original selection will be highlighted in the grid.

- From here, the user can make the desired changes for the reselection and proceed to inert or download the new/modified selection.



The screenshot shows the 'Greenheck - Reelect' software interface. At the top, there is a 'Revit' logo. Below it, the 'Basic Inputs' section contains several fields: Volume (CFM) set to 5000, External SP (in. wg) set to 2.5, Elevation (ft) set to 1, Voltage/Cycle/Phase set to 'No Preference', Model Group set to 'Roof Exhaust', Air Stream Temp (F) set to 70, and Start-up Temp (F) set to 70. There are also dropdown menus for 'Housing Style' (set to 'No Preference') and 'Discharge' (set to 'Any'). A red circle with the number '3' is placed over the 'Discharge' dropdown.

Below the inputs are sections for 'Certifications/Special Requirements', 'Advanced Inputs', and 'Static Pressure Corrections', all with downward-pointing arrows. The main part of the interface is a table of fan models. A red circle with the number '4' and an arrow points to the first row of the table. The table has columns for Rank, Model Name, Actual CFM, Total External SP (in. wg), Budget Price (USD), Operating Cost/Yr (USD), Bhp, Inlet Sones, Inlet dBA, Fan RPM, Drive Type, Weight (lbs), and AMCA. The first row is highlighted in yellow and contains the following data:

Rank	Model Name	Actual CFM	Total External SP (in. wg)	Budget Price (USD)	Operating Cost/Yr (USD)	Bhp	Inlet Sones	Inlet dBA	Fan RPM	Drive Type	Weight (lbs)	AMCA
1	G-200HP-A	4,911	2.412	\$2,055	\$978	3.8	31	79	1,725	Direct	177	
2	CUE-200HP-A	4,975	2.475	\$2,213	\$1,019	3.9	30	79	1,725	Direct	169	
3	G-240-B	4,828	2.331	\$3,235	\$864	3.3	21	71	1,140	Direct	239	
4	G-240-VG	5,000	2.500	\$3,378	\$914	3.7	23	72	1,181	Direct	225	
5	G-200HP-VG	4,911	2.412	\$3,270	\$932	3.8	31	79	1,725	Direct	205	

At the bottom of the table, it says '29 Fan(s)'. The interface also includes a settings gear icon in the top right corner of the table area.