

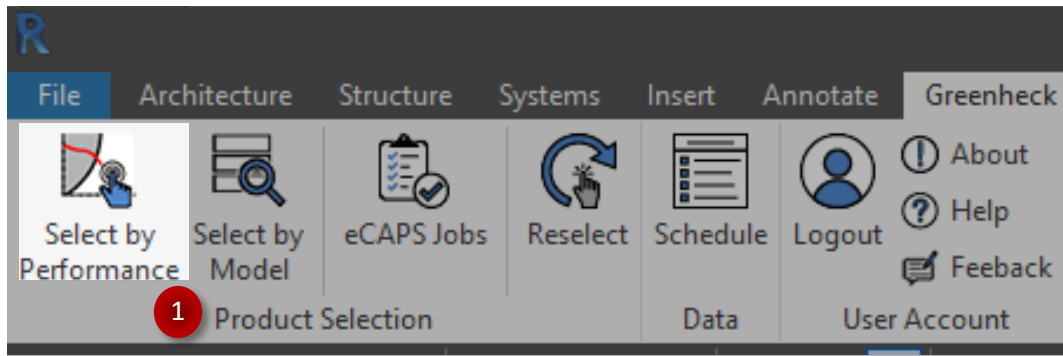
GREENHECK eCAPS BRIDGE FOR REVIT

Using 'Select by Performance'

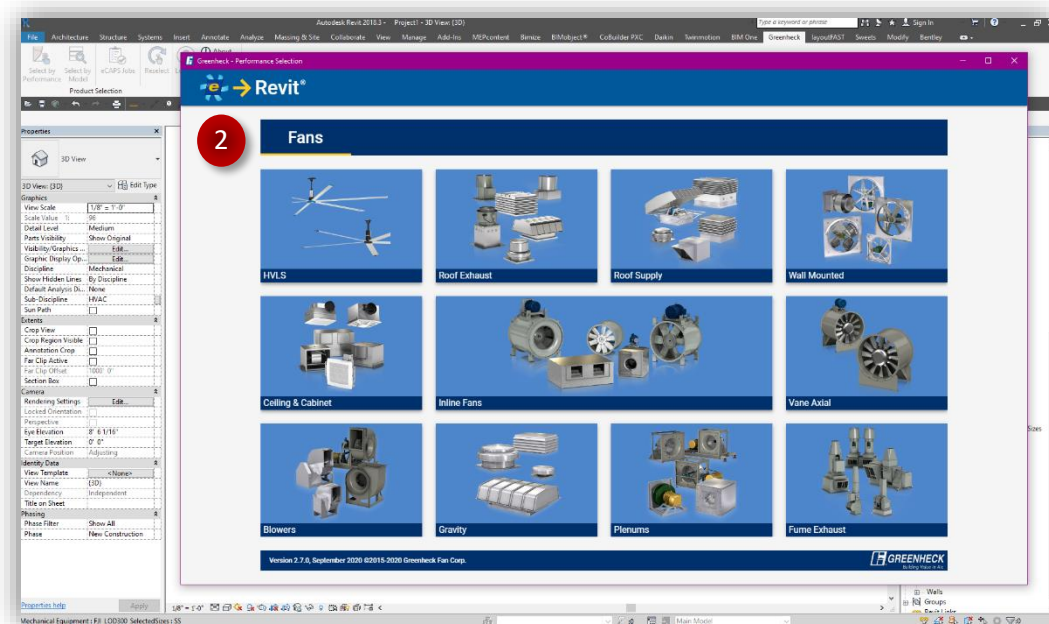
- The 'Select by Performance' option allows users to make a performance-based selection, following the typical eCAPS workflow.

Through this mode of selection, users have access to our Level of Development 300 (LOD 300) content.

(i.e., Content contains performance and electrical data as shared parameters in the Revit family).

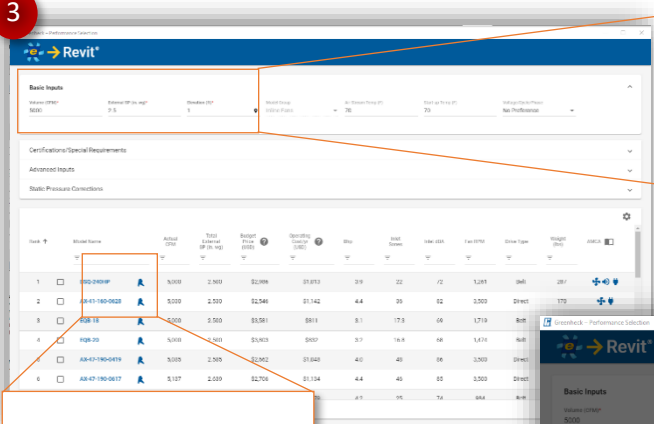


- Click on the 'Select by Performance' button on the Greenheck tab to launch the selection screen.
- Users start by picking which category of products they want to make a selection from.



- After the product category is selected, users then enter required basic information. *i.e., Volume, Static pressure and elevation.*

3



Basic Inputs

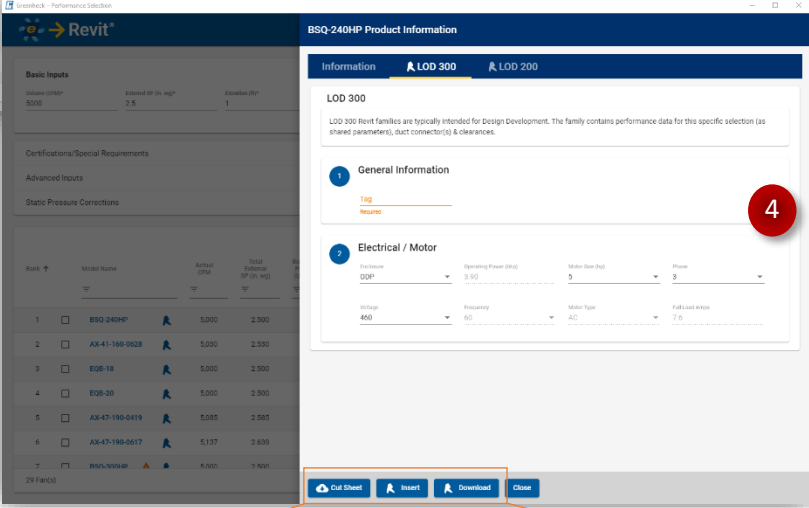
Volume (CFM)* External SP (in. wg)* Elevation (ft)*

5000 2.5 1

Model Name

- BSQ-240HP
- AX-41-160-0628
- FOB-18

4



Cut Sheet **Insert** **Download** **Close**

- Review the recommended products that meet the given criteria in the selection grid.
- Clicking on the 'R' next to your preferred selection in the grid triggers the slide out. The slide out allows users to:
 - Download product cut sheets.
 - Insert or Download LOD200 content.
 - Insert or Download LOD300 content.