

## Assembly Instructions

**READ THROUGH THESE INSTRUCTIONS PRIOR TO STARTING ASSEMBLY.**

### Document Instructions

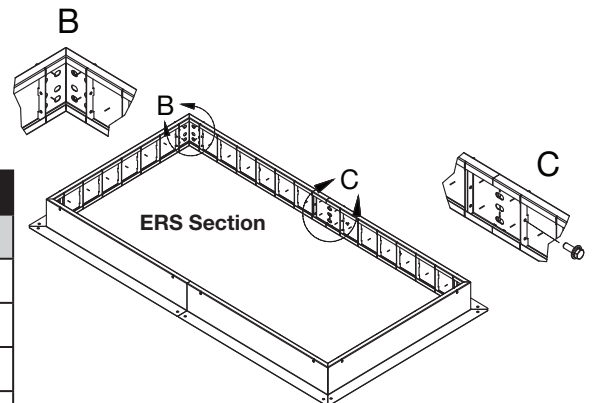
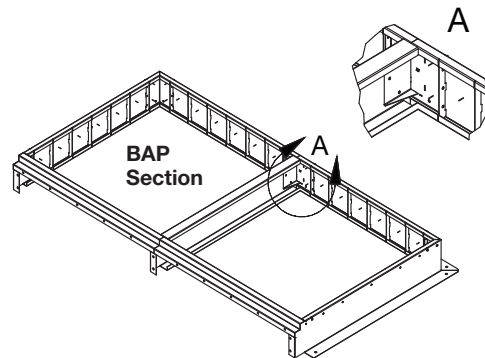
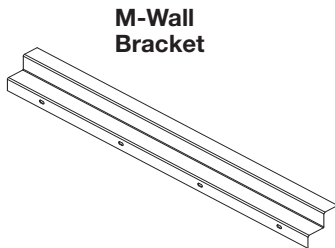
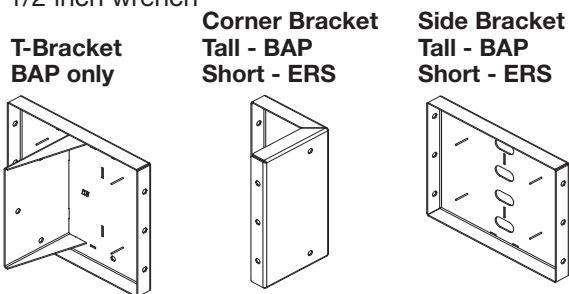
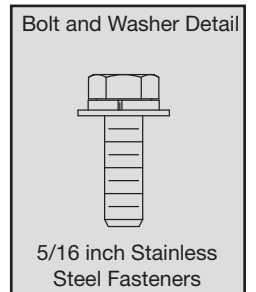
Use Document #1016916 with fastener kits 915007 – 915013. These kits are to be used with the Vektor-M Energy Recovery System (ERS) curbs. The fasteners contained within the kit are to be used to assemble and join the bypass air plenum (BAP) and ERS sections. Use images located within this document to locate the position of the fasteners on the unit.

### Assembly Instructions for Curb Panels and Brackets (Fastener Kits 915007 – 915010)

1. See Greenheck Document #474117 (Fan Plenum Curb Assembly) for full installation instructions.
2. Fastener kit includes fasteners required to assemble BAP and ERS sections by joining curb panels with bolt in brackets (corner, side, "T", and M-wall). Depending on configuration, some kits may have extra hardware when completed.
3. See images below to locate bolt holes. Install moly-coated 316 stainless steel bolts through curb panels into brackets. Insulation pieces may need to be removed.
4. When curb is fully assembled, fasten insulation back into place using fastener kit 915014.

#### Tools Required

- Cordless drill (electric or pneumatic)
- 1/2 inch nut setter
- 1/2 inch wrench

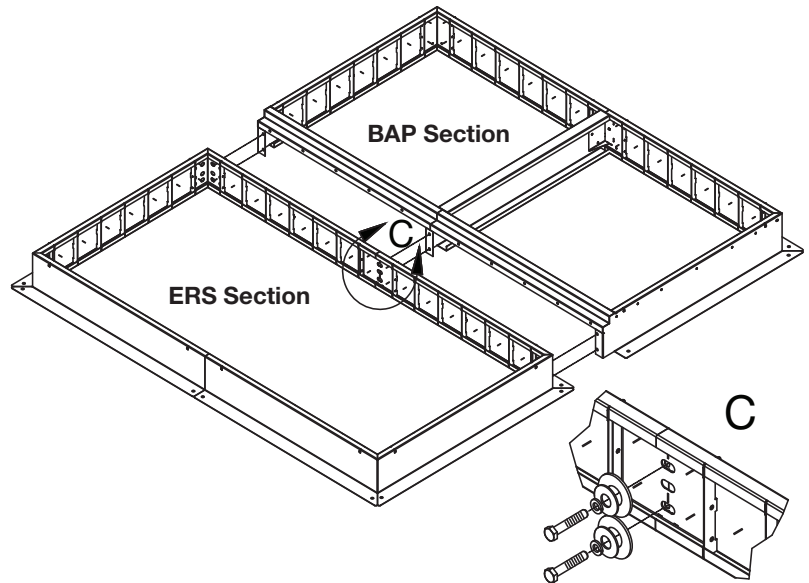


FASTENER KIT – BAP AND ERS CURB SECTIONS			
Kit #	Part Description	Part #	Quantity
915007	CS,HH,,313-18X1,SS,316,MOLY	416511	56
915008			72
915009			84
915010			98
	Assembly Instructions	1016916	1

## Assembly Instructions for BAP Section to ERS Section

### (Fastener Kits 915011 – 915013)

1. See Greenheck Document #474117 (Fan Plenum Curb Assembly) for full installation instructions.
2. The fastener kit includes hardware to bolt together the BAP section to the ERS section as one unit.
3. See image to the right to locate bolt holes. Install 316 stainless steel bolts through brackets of ERS section into BAP section. Some insulation may need to be removed.
4. When curb is fully assembled, fasten insulation back into place using fastener kit 915014.



### Tools Required

- Cordless drill (electric or pneumatic)
- 3/4 inch nut setter
- 3/4 inch wrench

#### FASTENER KIT 915011 – JOIN 1X1 BAP AND ERS SECTIONS

Part Description	Part #	Quantity
SCR,CS,HH,.5-13X1.5,SS,316	415782	4
NUT,HEX,.5-13,SS,316	415802	4
WSHR,LOCK,SPLIT,.5,SS,316	415809	4
WSHR,FLAT,.75X.1X.812X1.75,SS,316	415830	8
WSHR,FLAT,.05X.06X.531X1.25,SS,316	415803	8

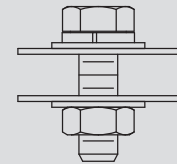
#### FASTENER KIT 915012 – JOIN 2X1 BAP AND ERS SECTIONS

Part Description	Part #	Quantity
SCR,CS,HH,.5-13X1.5,SS,316	415782	6
NUT,HEX,.5-13,SS,316	415802	6
WSHR,LOCK,SPLIT,.5,SS,316	415809	6
WSHR,FLAT,.75X.1X.812X1.75,SS,316	415830	12
WSHR,FLAT,.05X.06X.531X1.25,SS,316	415803	12

#### FASTENER KIT 915013 – JOIN 3X1 BAP AND ERS SECTIONS

Part Description	Part #	Quantity
SCR,CS,HH,.5-13X1.5,SS,316	415782	8
NUT,HEX,.5-13,SS,316	415802	8
WSHR,LOCK,SPLIT,.5,SS,316	415809	8
WSHR,FLAT,.75X.1X.812X1.75,SS,316	415830	16
WSHR,FLAT,.05X.06X.531X1.25,SS,316	415803	16

#### Bolt and Washer Detail



- 1/2 inch Bolt
- 1/2 inch Lock Washer
- 1/2 inch Flat Washer (2)
- 3/4 inch Flat Washer (2)
- 1/2 inch Nut