

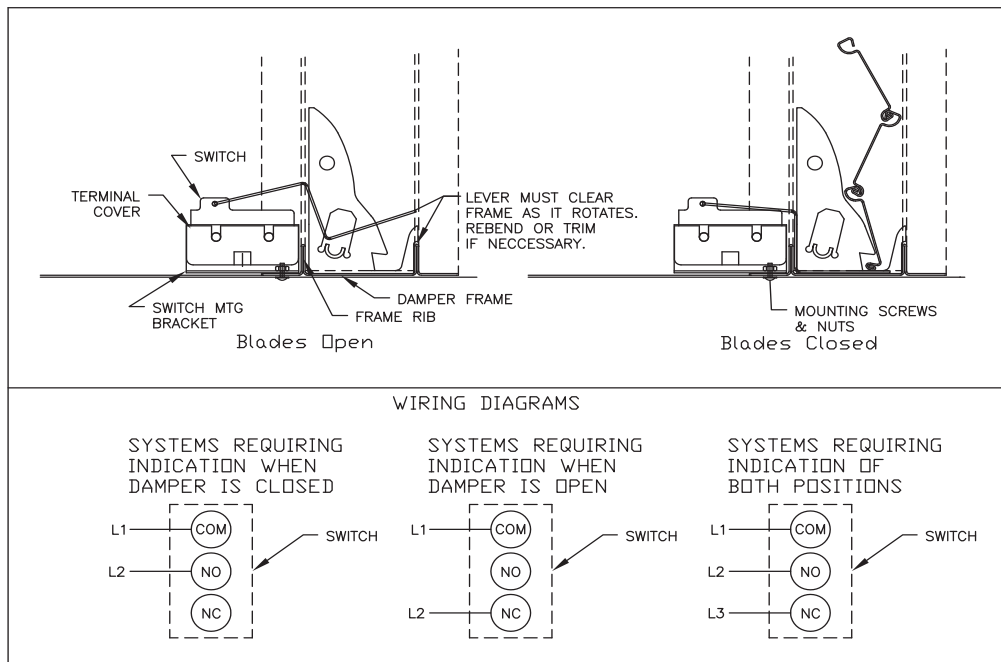
**Refer to:**

'Installation Instructions for FD, DFD, DFD X series, and FD X series Curtain Fire Dampers' (Part #481324)



**Installation Instructions:**

1. Position the switch near the center of the frame bottom. The switch bracket should be positioned against the frame rib. Transfer the two bracket mounting holes to the frame. Using a .281 dia. drill bit, drill the two holes through the damper frame.
2. Remove the switch cover and attach the electrical wires to the appropriate terminals of the switch. Reassemble the cover to the switch. Make sure the wires do not short each other. Tighten the screws that hold the switch and cover to the bracket.
3. Attach the switch bracket to the frame using the supplied screws and nuts. Make sure the switch bracket is pushed against the frame rib, then tighten the fasteners. Cycle the switch lever to make sure that it clears the frame ribs and operates freely. If interference detected, bend the switch lever or reposition the mounting bracket.



**Our Commitment**

As a result of our commitment to continuous improvement, Greenheck reserves the right to change specifications without notice.

Product warranties can be found online at [Greenheck.com](http://Greenheck.com), either on the specific product page or in the literature section of the website at [Greenheck.com/Resources/Library/Literature](http://Greenheck.com/Resources/Library/Literature).