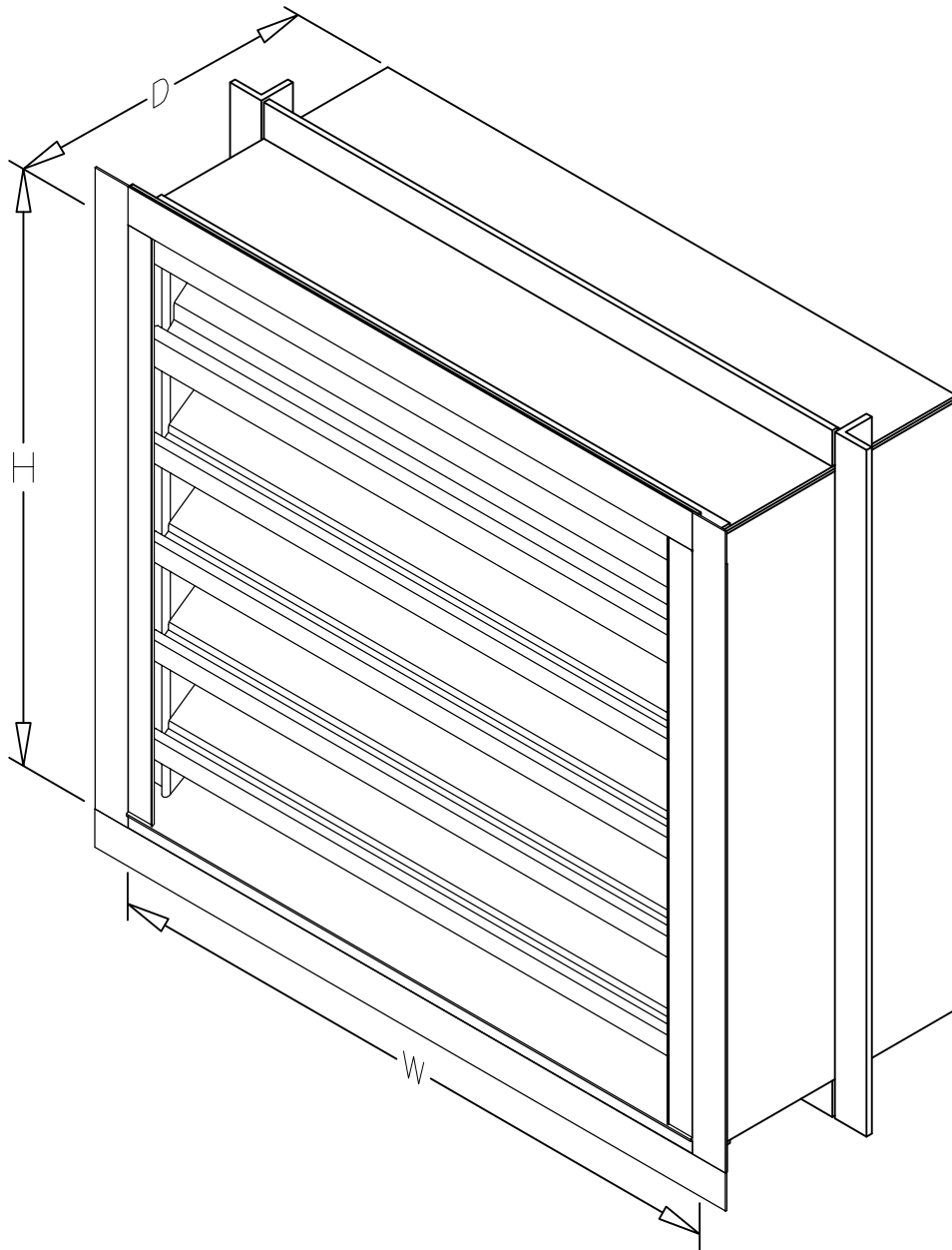


## Installation, Operation and Maintenance Manual

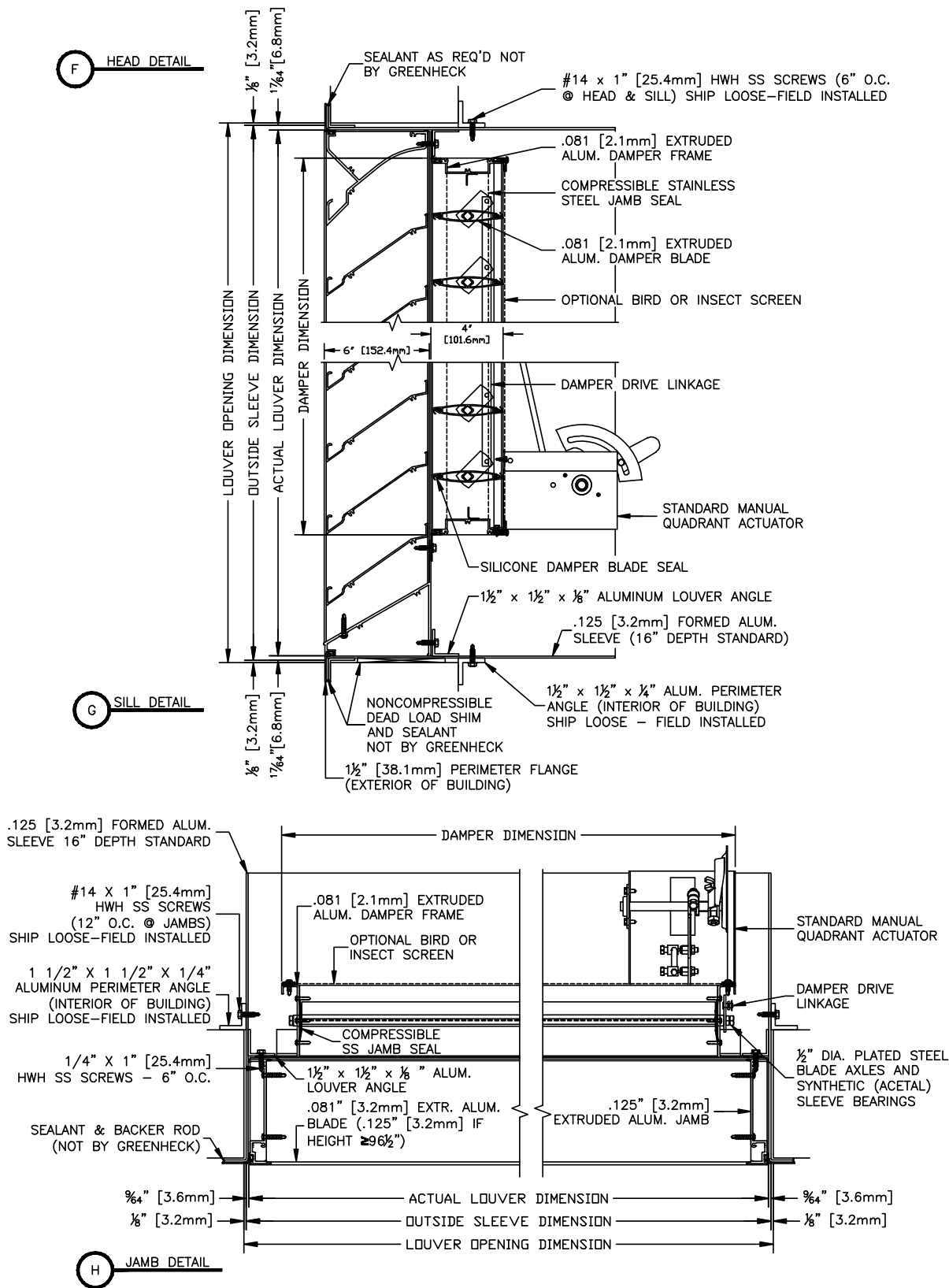
Please read and save these instructions for future reference. Read carefully before attempting to assemble, install, operate or maintain the product described. Protect yourself and others by observing all safety information. Failure to comply with these instructions will result in voiding of the product warranty and may result in personal injury and/or property damage.

Maximum Wind-load: 150 PSF

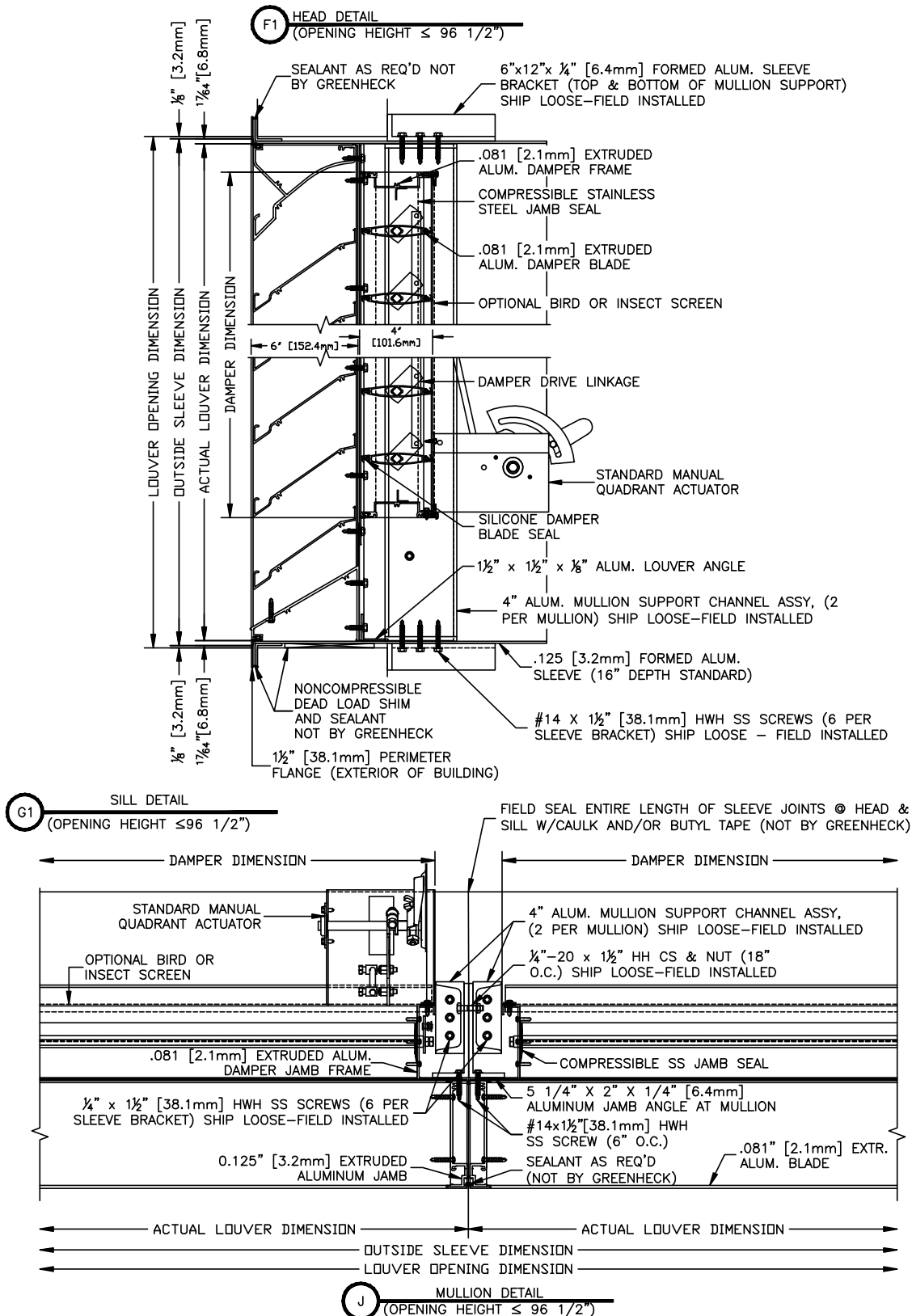




Single Section

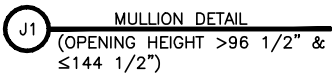
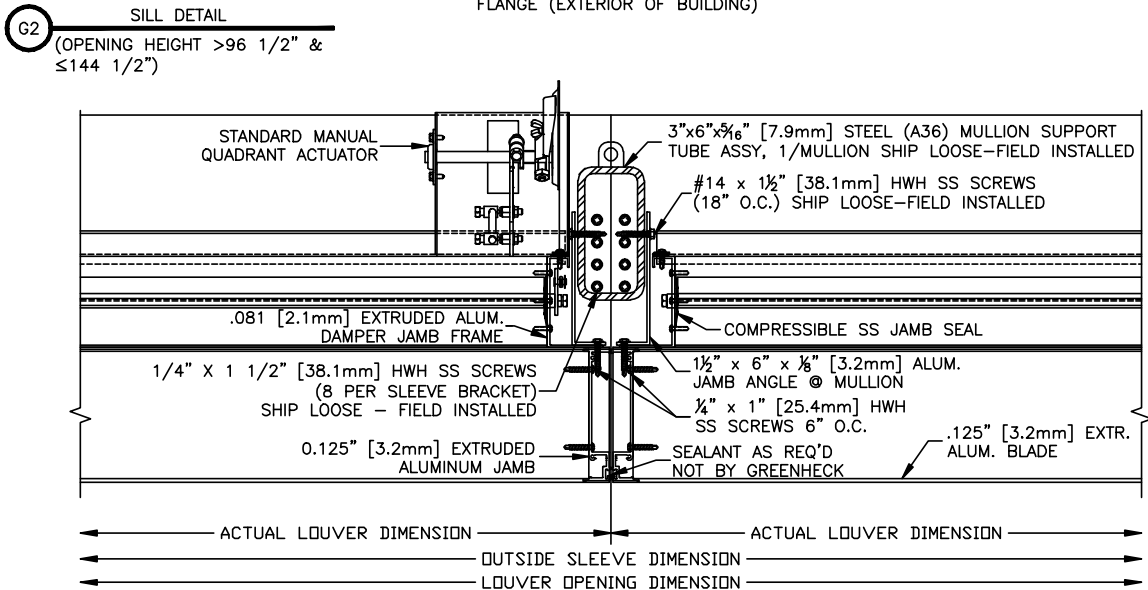
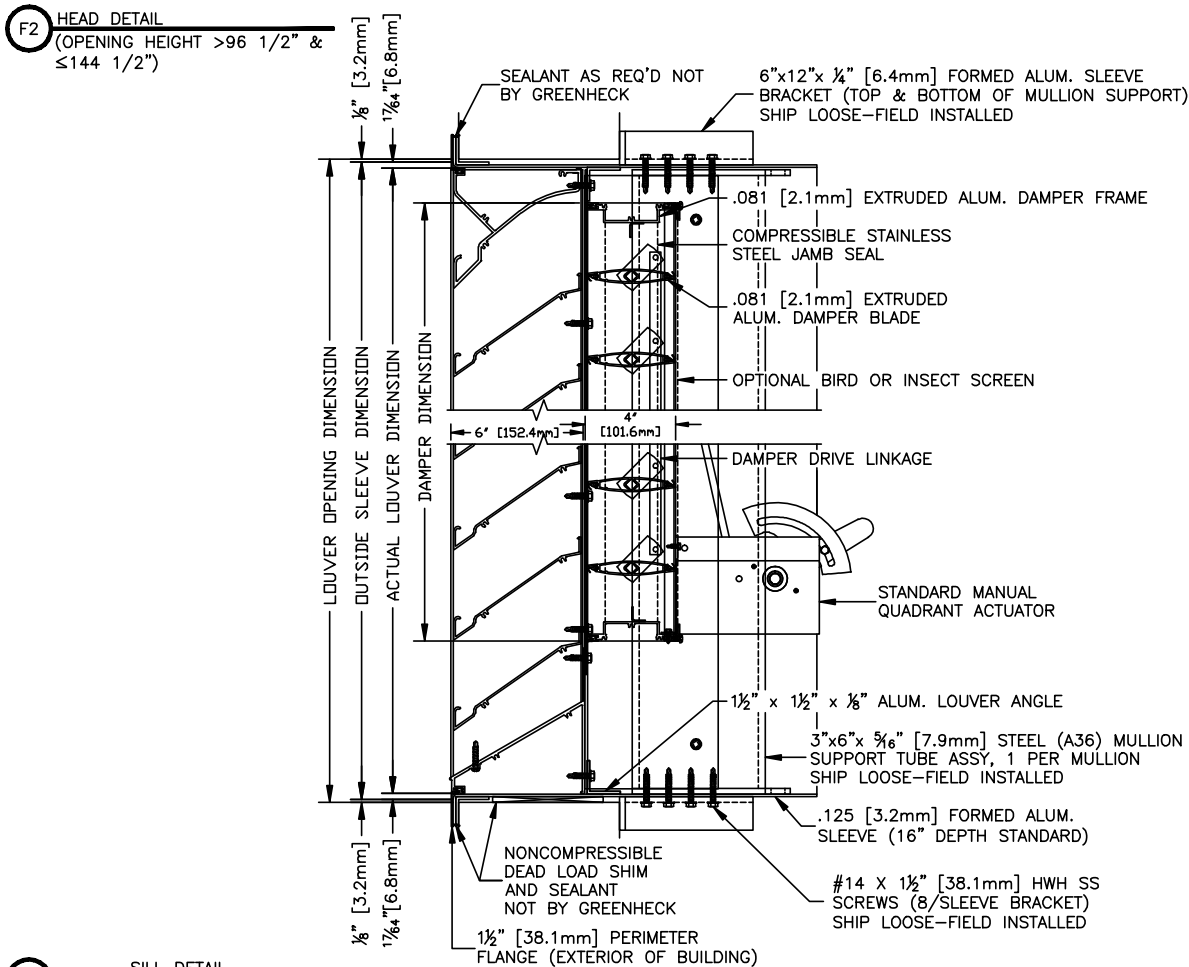


## Multiple Sections

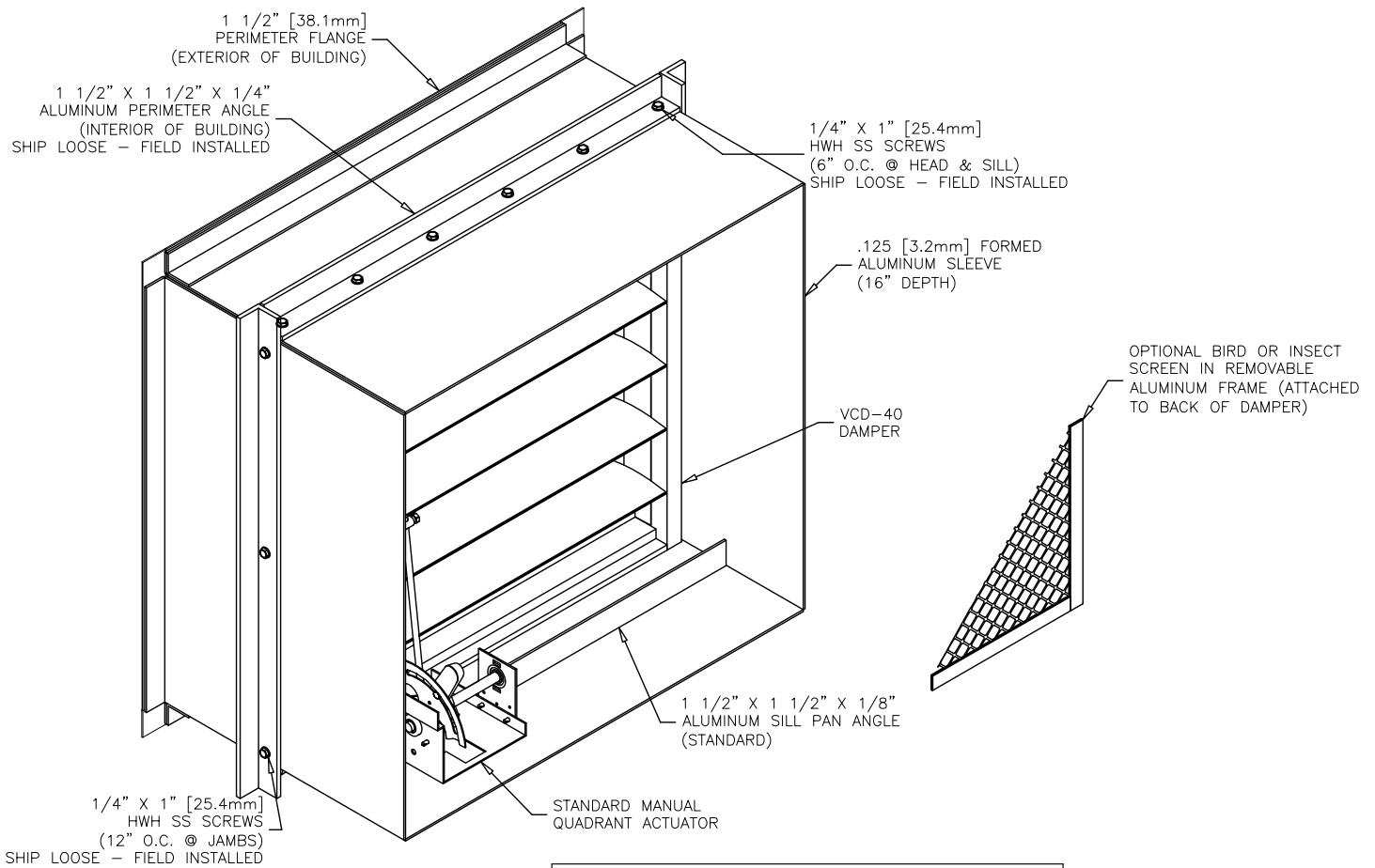
Height  $\leq 96 \frac{1}{2}$ 

# Multiple Sections

Height > 96 1/2" ≤ 144 1/2"



## Single Section

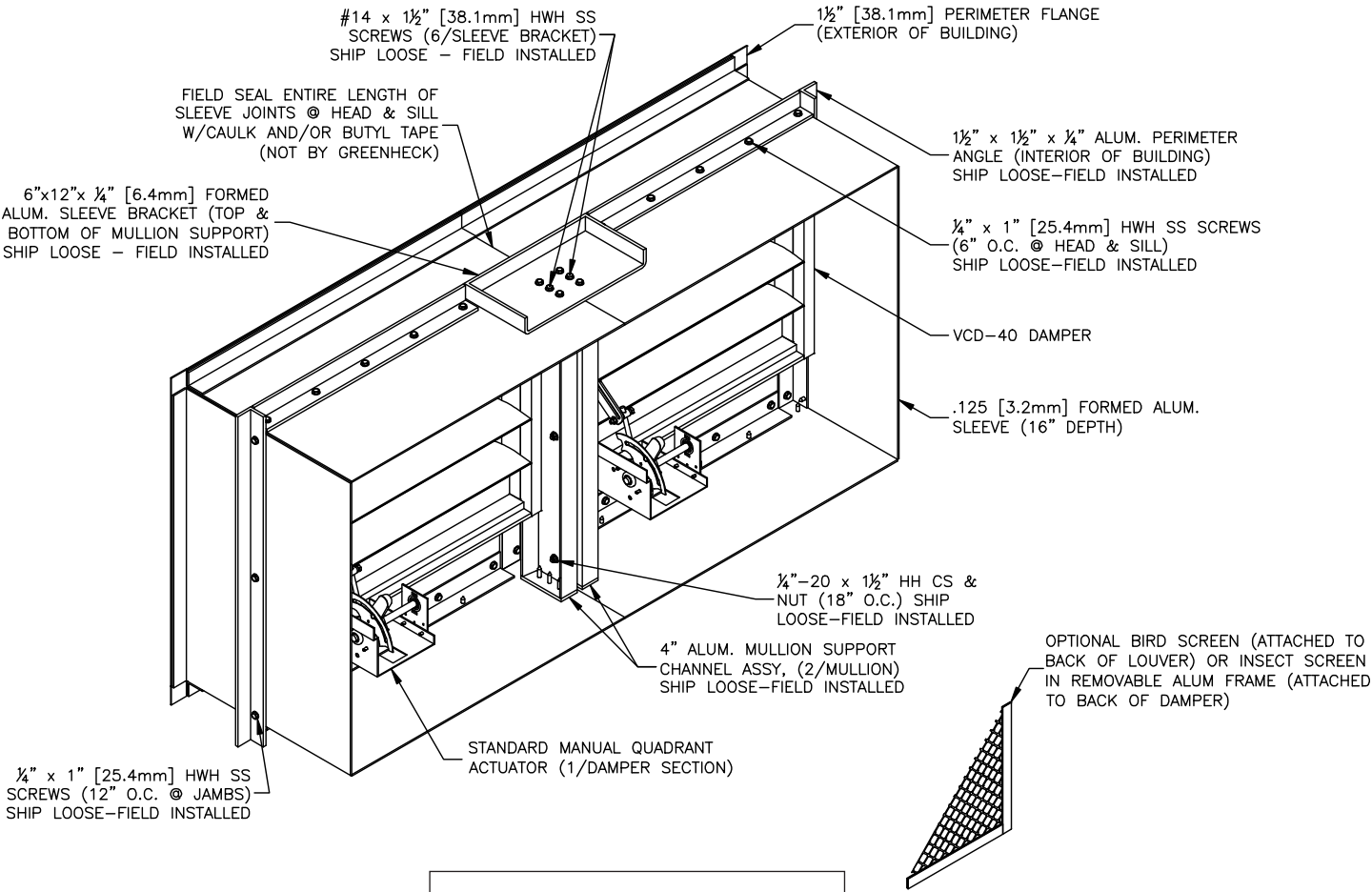


### Structure Depth

- Min. structure depth 4 in.
- Max. structure depth 14.5 in.

# Multiple Sections

Height ≤ 96 1/2

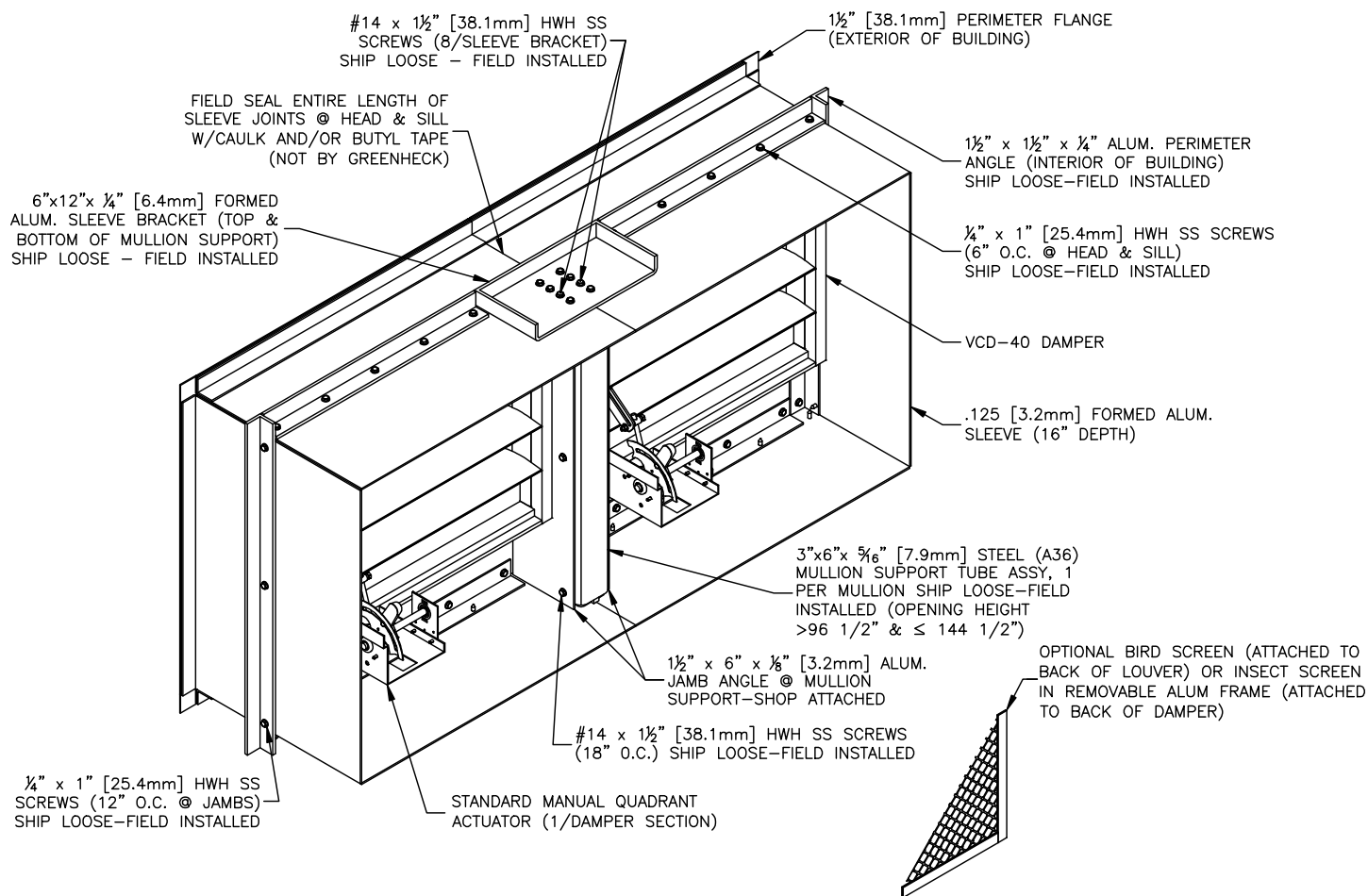


## Structure Depth

- Min. structure depth 4 in.
- Max. structure depth 11.5 in.

## Multiple Sections

Height > 96 1/2" ≤ 144 1/2"



### Structure Depth

- Min. structure depth 4 in.
- Max. structure depth 13.25 in.

## Our Commitment

*As a result of our commitment to continuous improvement, Greenheck reserves the right to change specifications without notice.*

Product warranties can be found online at [Greenheck.com](http://Greenheck.com), either on the specific product page or in the literature section of the website at [Greenheck.com/Resources/Library/Literature](http://Greenheck.com/Resources/Library/Literature).

