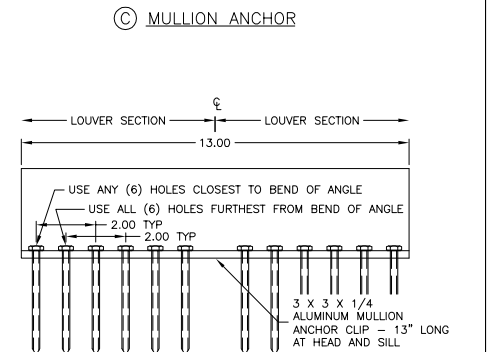
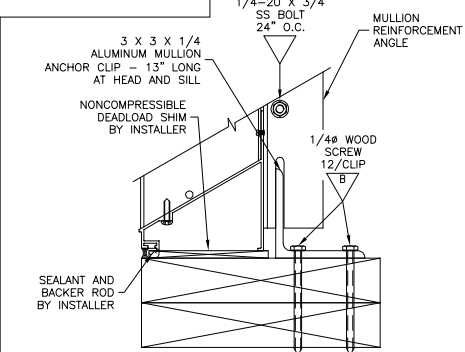
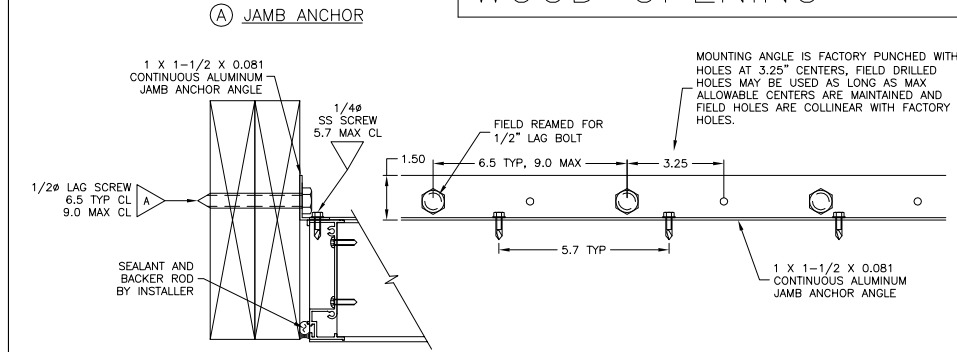
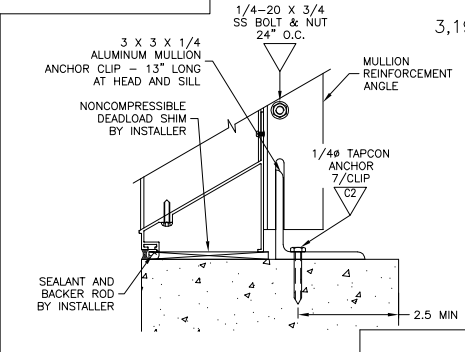
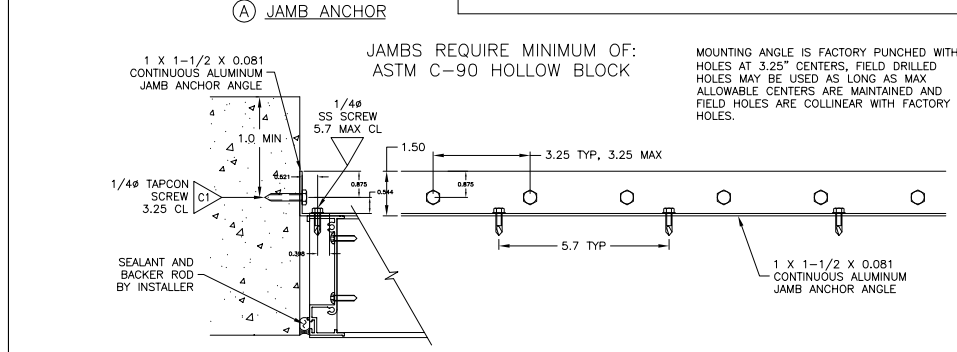


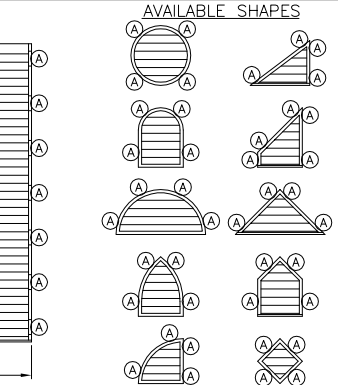
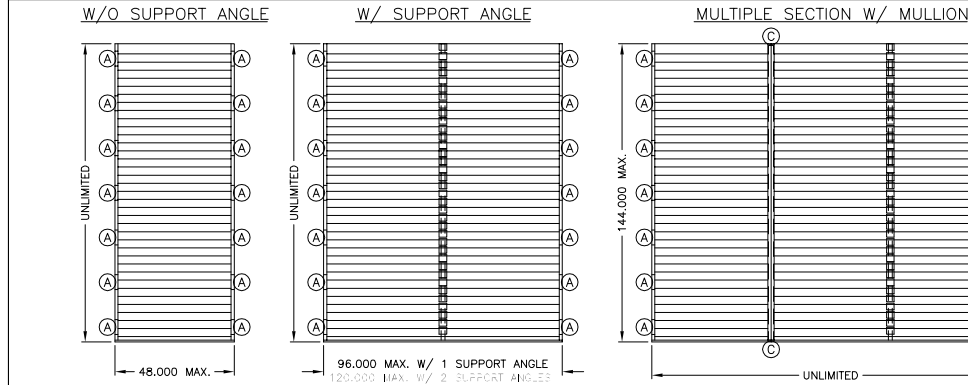
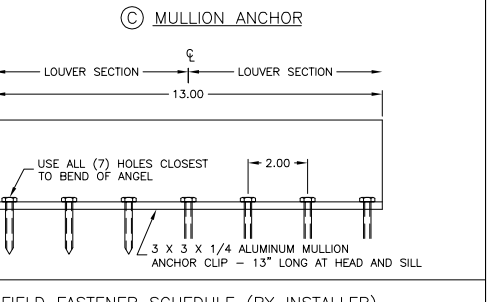
WOOD OPENING MINIMUM G = 0.42 DENSITY



MASONRY OPENING



MULLION ANCHORS REQUIRE MINIMUM OF:  
 3,192 PSI CONCRETE OR  
 3,192 PSI GROUT FILLED ASTM C-90 HOLLOW BLOCK



FIELD FASTENER SCHEDULE (BY INSTALLER)

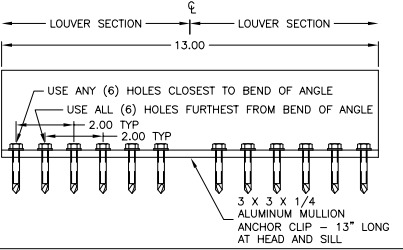
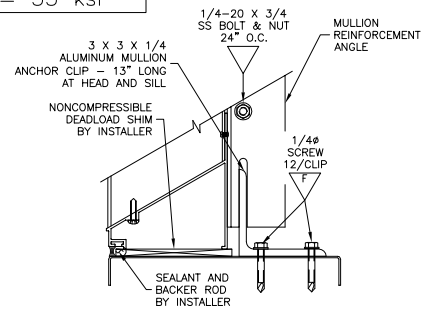
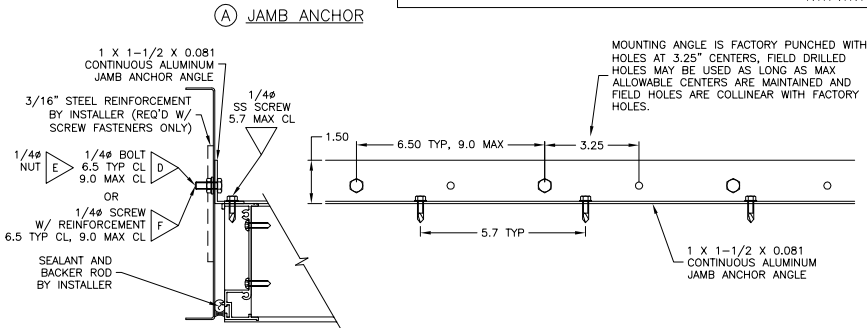
TYPE	DESCRIPTION	MIN. EMBED.	MIN. EDGE DIST.	MIN. SPACING
A	1/2" LAG SCREW	3"	2 1/2"	3"
B	1/4" WOOD SCREW	3"	1 1/2"	1 1/2"
C1	1/4" TAPCON ANCHOR	1 1/4"	1"	3.25" (MAX)
C2	1/4" TAPCON ANCHOR	1 3/4"	2.5"	2" (MAX)

INSTALLER TO PROVIDE SEPARATION OF DISSIMILAR MATERIALS AS REQUIRED

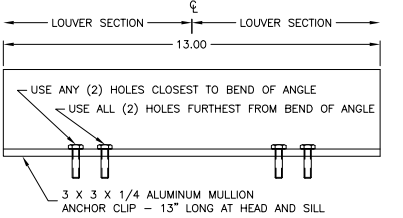
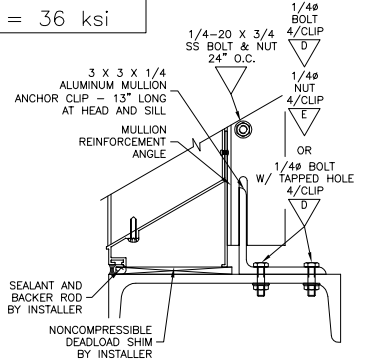
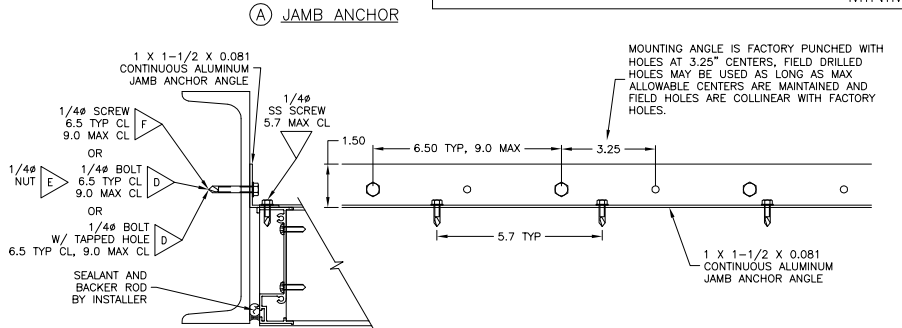
INSTRUCTIONAL

PART NO.	MAT'L	GAUGE	DESCRIPTION
			DRAWN BY: STEELE DATE: 08/16/2011 SUPERSEDES: SCALE: CAD DRAWING NO.
TITLE: ESD-435X INSTALLATION DETAILS 1 OF 2			ENG. REF.: IAN36764 ESD-435X IOM PART # 469319
			618112

**STEEL OPENING 16 GA MINIMUM THICKNESS**  
MINIMUM Fy = 33 ksi



**STEEL OPENING 1/4\"**



**GENERAL NOTES:**

- IT SHALL BE THE RESPONSIBILITY OF THE PERMIT HOLDER TO VERIFY THE STRUCTURAL INTEGRITY OF THE EXISTING STRUCTURE TO SUPPORT THE LOADS SUPERIMPOSED BY THE LOUVERS.
- INSTALLER TO PROVIDE SEPARATION OF DISSIMILAR MATERIALS AS REQUIRED.
- WOOD SUBSTRATE TO BE MINIMUM G = 0.42 DENSITY.
- CONCRETE SUBSTRATE TO BE MINIMUM 3,200 PSI.
- STEEL STUD OPENINGS (16 GA MINIMUM THICKNESS) TO BE MINIMUM Fy = 33 ksi
- STRUCTURAL STEEL OPENINGS (1/4\"

**FIELD FASTENER SCHEDULE (BY INSTALLER)**

TYPE	DESCRIPTION	MIN. EMBED.	MIN. EDGE DIST.	MIN. SPACING
D	1/4\"	FULL	1/2\"	1\"
E	1/4\"	FULL	1/2\"	1\"
F	1/4\"	FULL	1/2\"	1\"

INSTALLER TO PROVIDE SEPARATION OF DISSIMILAR MATERIALS AS REQUIRED

INSTRUCTIONAL			
PART NO.	MAT'L	GAUGE	DESCRIPTION
			DRAWN BY: STEELE DATE: 08/16/2011 SUPERSEDES:
TITLE: ESD-435X INSTALLATION DETAILS 2 OF 2			ECD: JAN36764 SNG REF: ESD-435X IOM PART # 475578
CAD DRAWING NO.			B
618142			

