

**Refer to:**

'Installation Instructions for VCD, FBH, and FBV Series Control Dampers' (Part #463384)

**Models:**

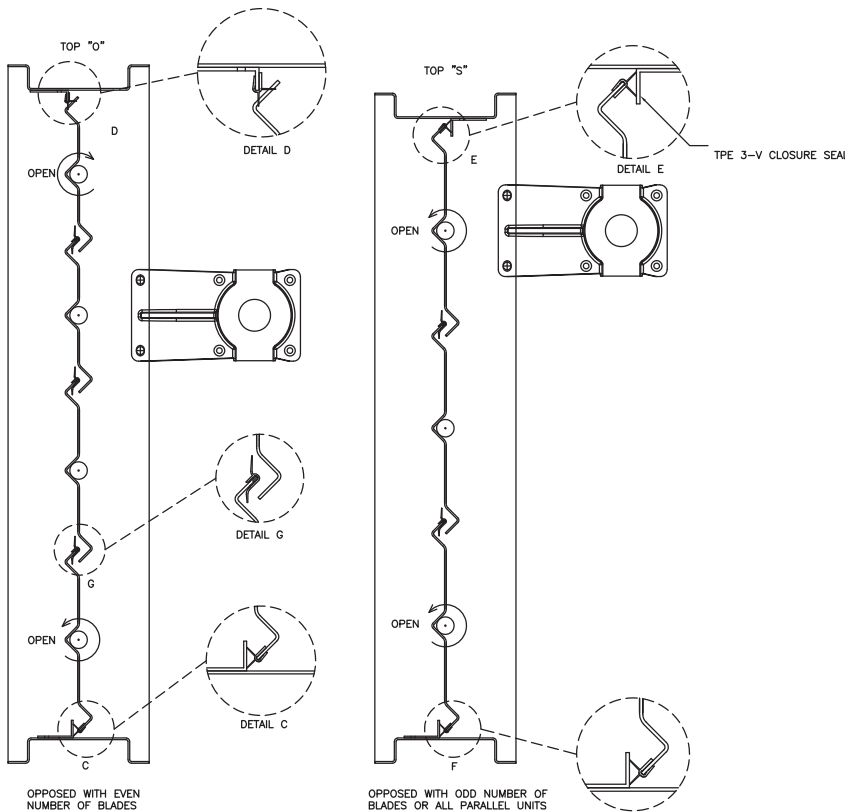
FBH-23, FBH-33, FBV-23, FBV-33, VCD-23, VCD-23V, VCD-33, VCD-33V, VCD-34, VCD-34V, SEVCD-23, SEVCD-33

These instructions address either replacement or initial installation.

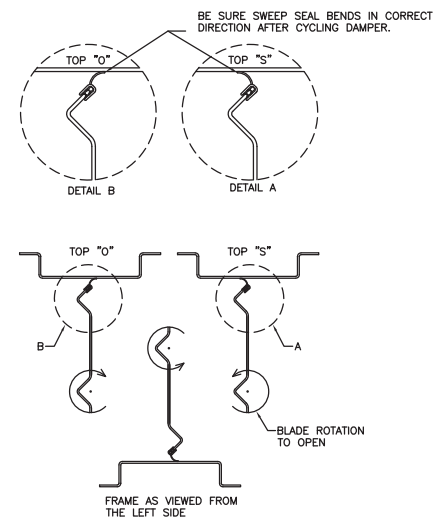
The TPE seal pushes onto the blade edge and is held by the friction between the blade material and directional projections inside the rigid plastic clip. Seal material is cut-to-length before installing. If your damper has a closure strip, install the seal as shown on the drawing. If you have no closure strip, you will install the sweep seal as shown on the drawing. Seal is normally installed to the drive blade and to every blade tip on the same side of damper.

| Blade Type         | Elastomer Material | Greenheck Part number |
|--------------------|--------------------|-----------------------|
| 3V                 | Blade Seal         | 485394                |
|                    | Sweep Seal         | 485393                |
|                    | Closure Seal       | 472783                |
| Fabricated Airfoil | Blade Seal         | 485392                |
|                    | Sweep Seal         | 474708                |
|                    | Closure Seal       | 485392                |

CLOSURE STRIP DETAIL

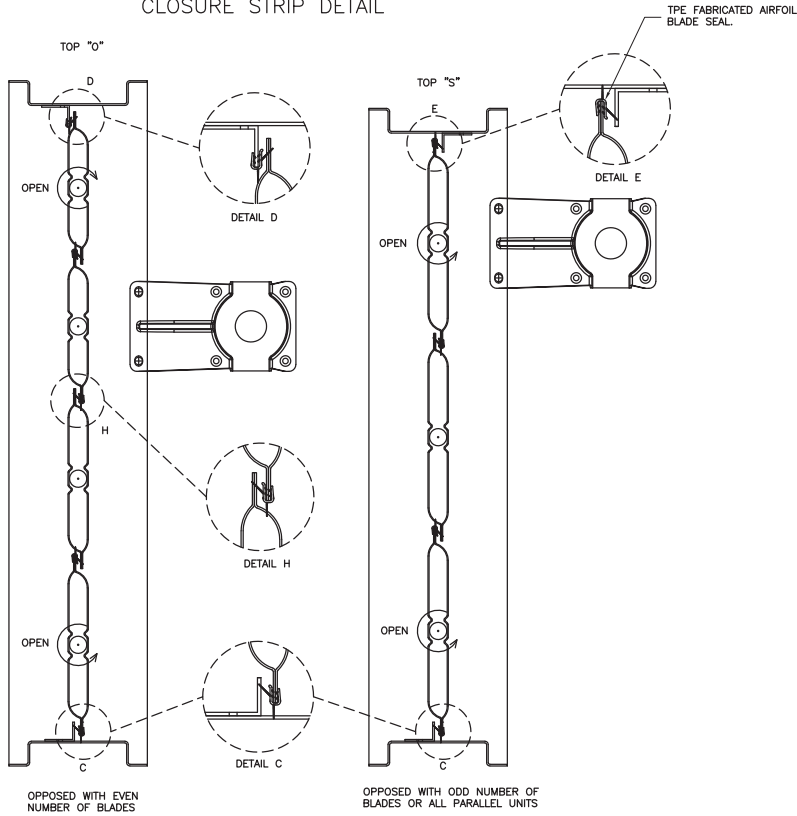


SWEEP SEAL DETAIL

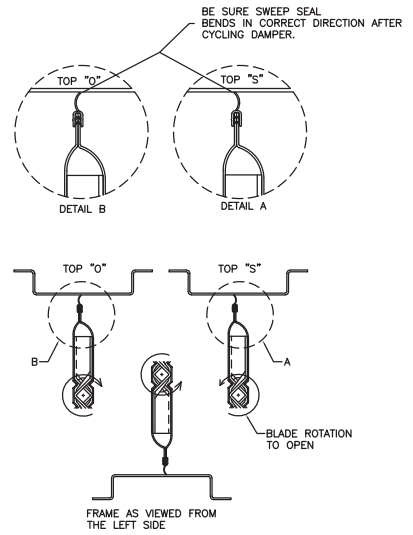


Models: FBH-23, FBV-23, VCD-23, VCD-23V, SEVCD-23

CLOSURE STRIP DETAIL



SWEEP SEAL DETAIL



Models: FBH-33, FBV-33, VCD-33, VCD-34, VCD-33V, VCD-34V, SEVCD-33



Phone: (715) 359-6171 • Fax: (715) 355-2399 • E-mail: [gfcinfo@greenheck.com](mailto:gfcinfo@greenheck.com) • Website: [www.greenheck.com](http://www.greenheck.com)