

## Installation, Operation and Maintenance Manual

Please read and save these instructions for future reference. Read carefully before attempting to assemble, install, operate or maintain the product described. Protect yourself and others by observing all safety information. Failure to comply with these instructions will result in voiding of the product warranty and may result in personal injury and/or property damage.



Designed for either supply or exhaust applications on natural gravity or positive pressure systems. Often used in conjunction with other HVAC products requiring an intake or exhaust vent. These units are low profile and have a rigid aluminum, corrosion resistant design providing a strong, long lasting, efficient and economical product. Integral birdscreen prevents entry of birds and other small objects. Built in curb cap with prepunched holes for easy attachment to roof curbs.

Optional built-in flashing flange (model GRSF) with prepunched holes for quick and easy installations without a roof curb.

### Receiving

Upon receiving the product, check to ensure all items are accounted for by referencing the delivery receipt or packing list. Inspect each crate or carton for shipping damage before accepting delivery. Alert the carrier of any damage detected. The customer will make notation of damage (or shortage of items) on the delivery receipt and all copies of the bill of lading which is countersigned by the delivering carrier. If damaged, immediately contact your representative. Any physical damage to the unit after acceptance is not the responsibility of the manufacturer.

### Unpacking

Verify that all required parts and the correct quantity of each item have been received. If any items are missing, report shortages to your local representative to arrange for obtaining missing parts. Sometimes it is not possible that all items for the unit be shipped together due to availability of transportation and truck space. Confirmation of shipment(s) must be limited to only items on the bill of lading.

### Installation

#### **NOTE**

Mount unit on a flat surface or mount to a roof curb.

### Roof mount with a curb

1. Cut an appropriate sized hole in the roof surface. Follow curb manufacturer's installation instructions. Caulk and flash curb to ensure a watertight seal.
2. Install optional backdraft damper. Secure damper flange to curb damper tray.
3. Place ventilator on curb.
4. Secure ventilator to roof curb using a minimum of eight fasteners.
5. Check all fasteners for tightness.

### Roof mount with flashing flange

1. Cut an appropriate sized hole in the roof surface. Caulk flashing flange to ensure a watertight seal.
2. Install optional backdraft damper. Secure damper to duct work.
3. Place ventilator on roof.
4. Secure ventilator to roof using a minimum of eight fasteners.
5. Check all fasteners for tightness.

### Maintenance

Keep inlets and approaches to ventilator clean and free from obstruction. Depending on the usage and severity of the contaminated air, a regularly scheduled inspection for cleaning the ventilator, and surrounding areas should be established.

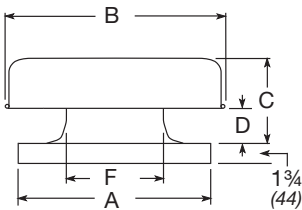
## Dimensional Data

Unit Size	A	B	C	D	E	F	Damper Size
8	19 (483)	20½ (521)	7¼ (184)	1½ (38)	20¼ (514)	8¼ (210)	8 x 8 (203 x 203)
10	19 (483)	20½ (521)	7¼ (197)	2 (51)	20¼ (514)	10¼ (260)	10 x 10 (254 x 254)
12	22 (559)	29 (737)	10 (254)	3½ (89)	23¼ (591)	12¼ (311)	12 x 12 (305 x 305)
15	22 (559)	29 (737)	10 (254)	3½ (89)	23¼ (591)	14¼ (362)	16 x 16 (406 x 406)
16	26 (660)	29 (737)	11 (279)	4¼ (108)	27¼ (692)	16¼ (413)	16 x 16 (406 x 406)
18	30 (762)	35½ (902)	9¼ (248)	1¼ (44)	31¼ (794)	20¼ (514)	18 x 18 (457 x 457)
20	30 (762)	35½ (902)	11¼ (286)	3¼ (95)	31¼ (794)	20¼ (514)	18 x 18 (457 x 457)
24	34 (864)	38¼ (972)	11 (279)	4 (102)	35¼ (895)	24½ (622)	24 x 24 (610 x 610)
30	40 (1016)	48 (1219)	18¾ (476)	5⅞ (138)	-	30½ (775)	30 x 30 (762 x 762)
36	46 (1168)	56¾ (1441)	21¼ (540)	6 (152)	-	36½ (927)	36 x 36 (914 x 914)
42	52 (1321)	63¼ (1607)	24¼ (616)	6¼ (159)	-	42½ (1089)	42 x 42 (1067 x 1067)
48	58 (1473)	72 (1829)	26¼ (667)	6½ (165)	-	48½ (1232)	48 x 48 (1219 x 1219)

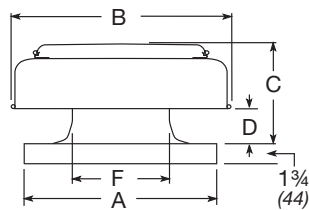
All dimensions in inches (millimeters) and the weight in pounds (kilograms).

NOTE: Sizes GRS-8 through 24 have a one-piece cover and shroud. Access is gained through the removal of screws. Sizes GRS-30 through 48 have a removable cover, separate from the shroud to facilitate maintenance and servicing of dampers.

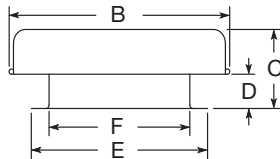
### GRSI/GRSR Sizes 8 - 24



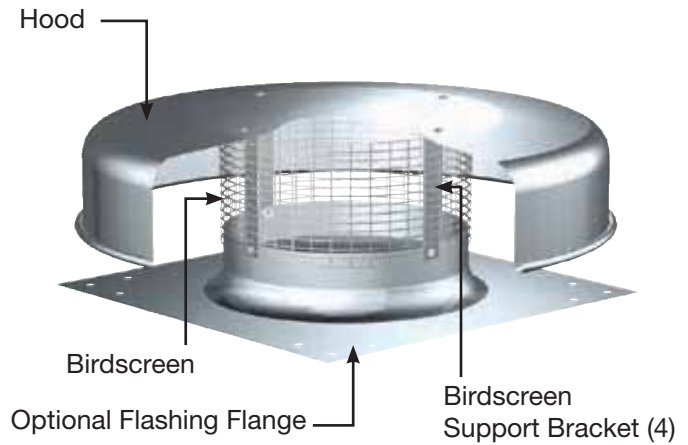
### GRSI/GRSR - Sizes 30 - 48



### GRSF - Sizes 8 - 24 with Optional Flashing Flange



## Parts List



## Our Commitment

As a result of our commitment to continuous improvement, Greenheck reserves the right to change specifications without notice.

Product warranties can be found online at [Greenheck.com](http://Greenheck.com), either on the specific product page or in the literature section of the website at [Greenheck.com/Resources/Library/Literature](http://Greenheck.com/Resources/Library/Literature).

