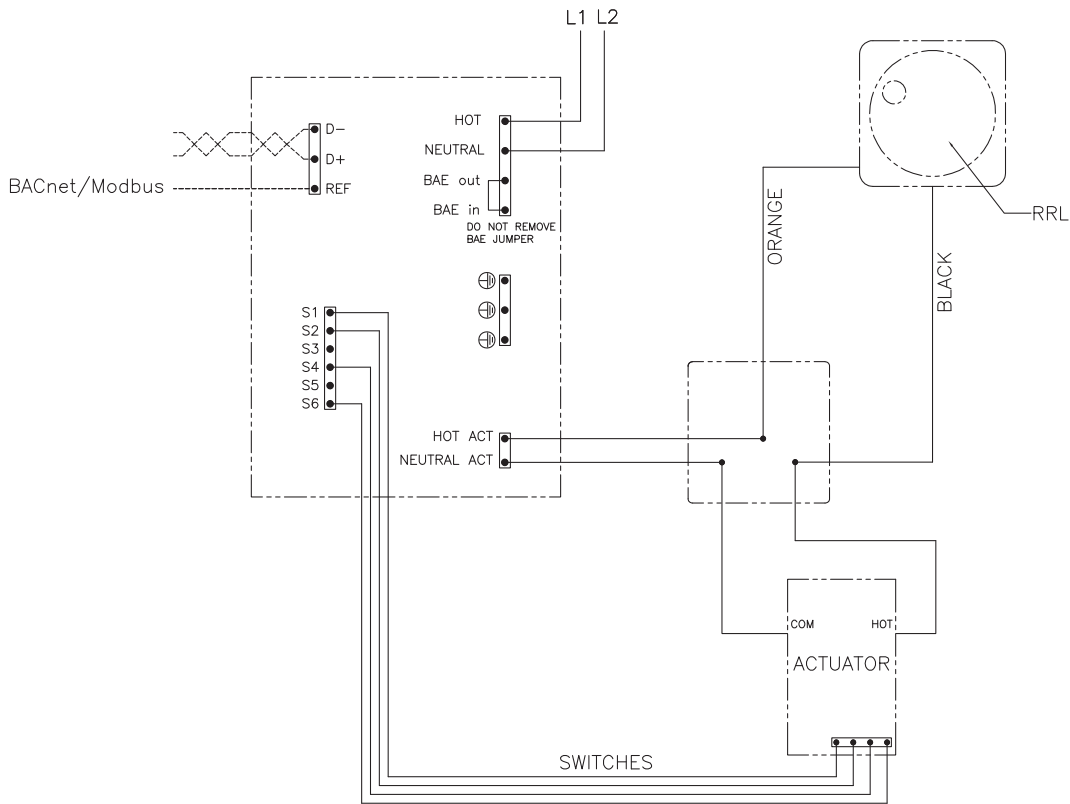
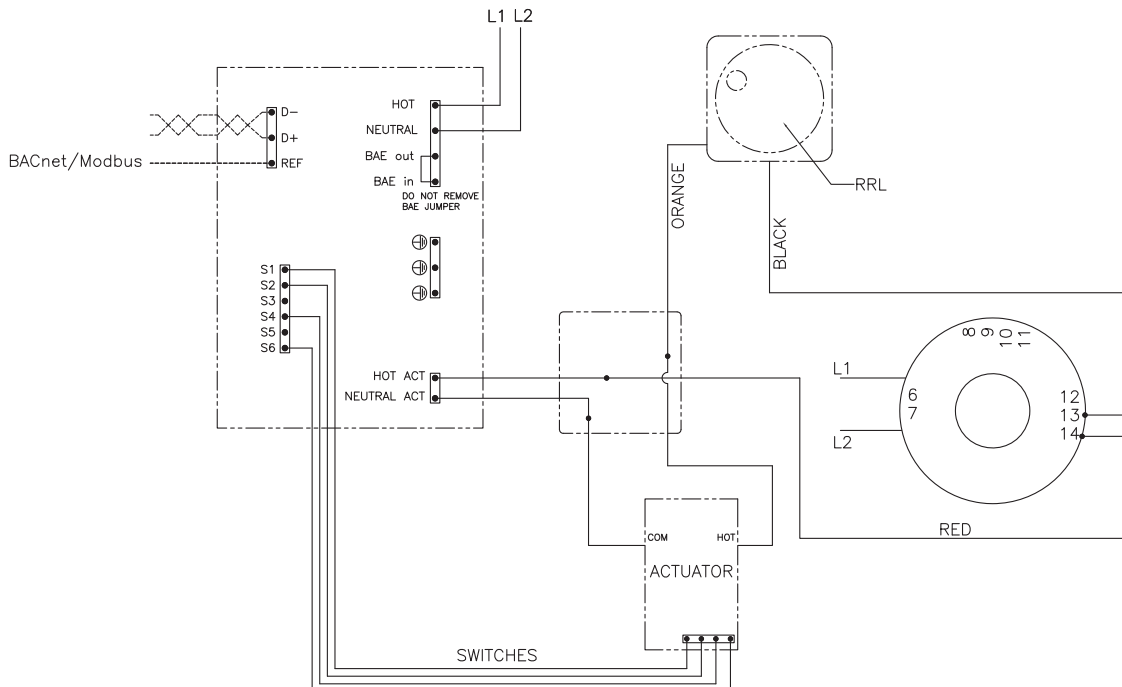


Wiring Diagrams: FSKN120-BAC

RRL

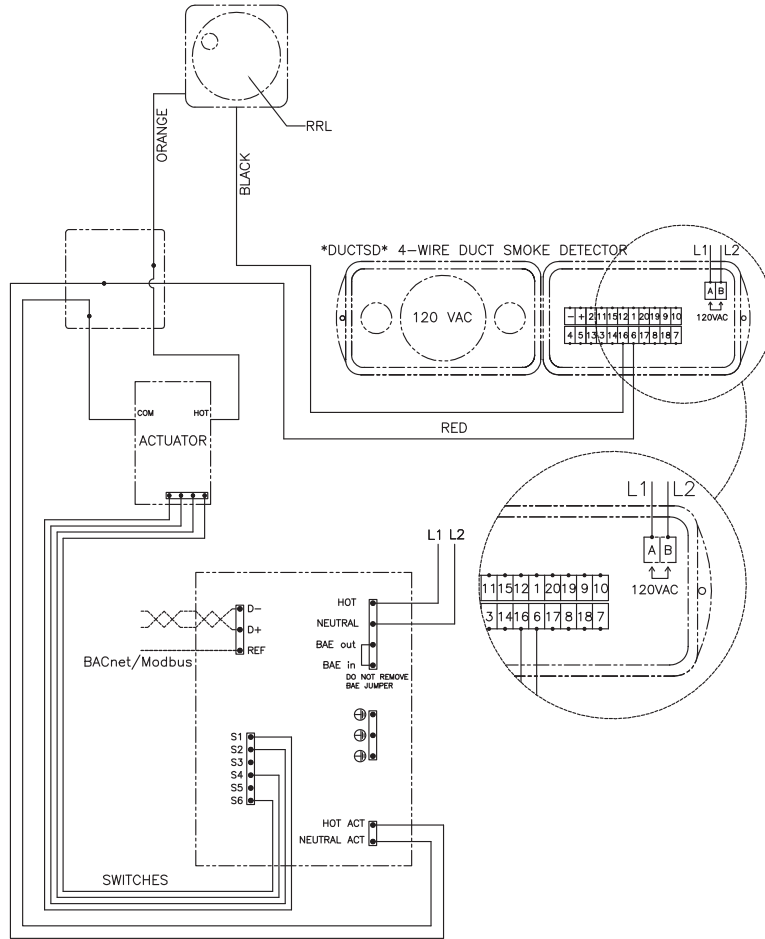


RRL with no flow smoke detector

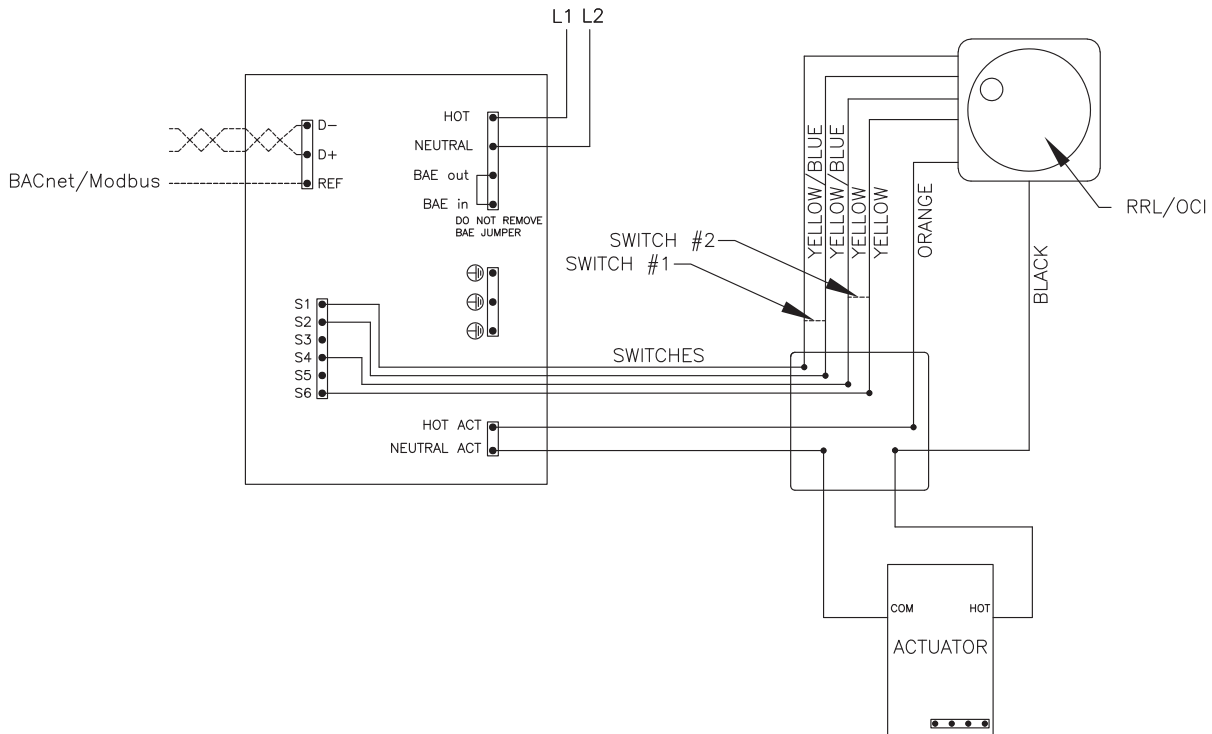


Wiring Diagrams: FSKN120-BAC

RRL with Low Flow Smoke Detector

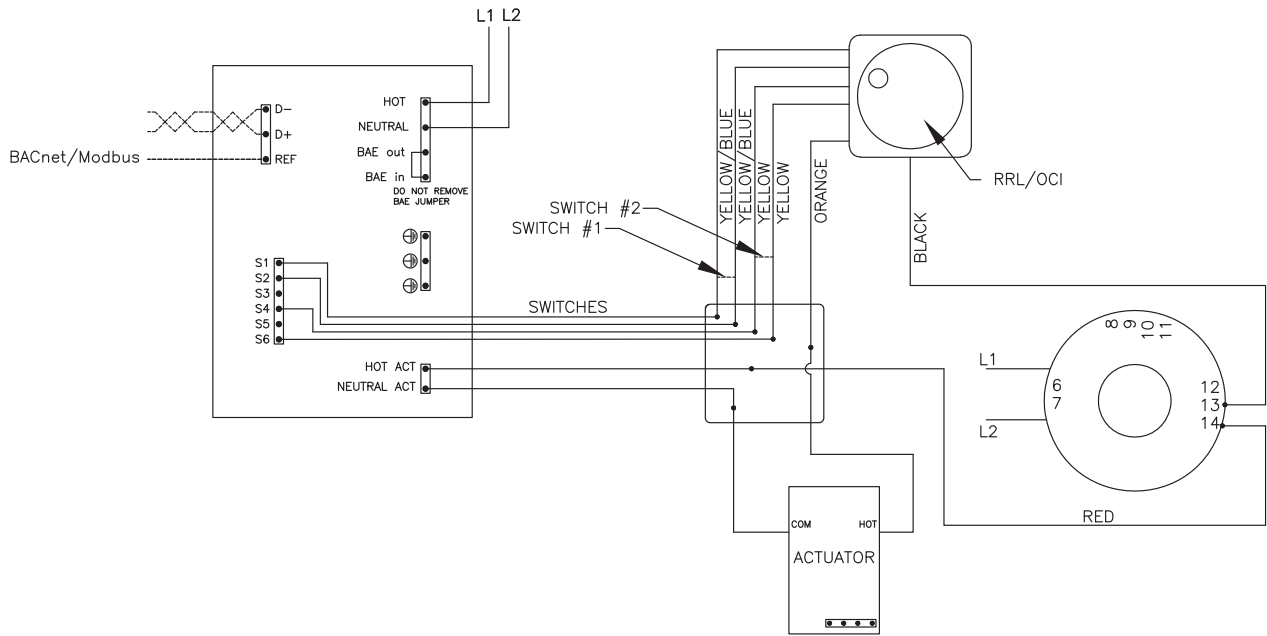


RRL/OCI

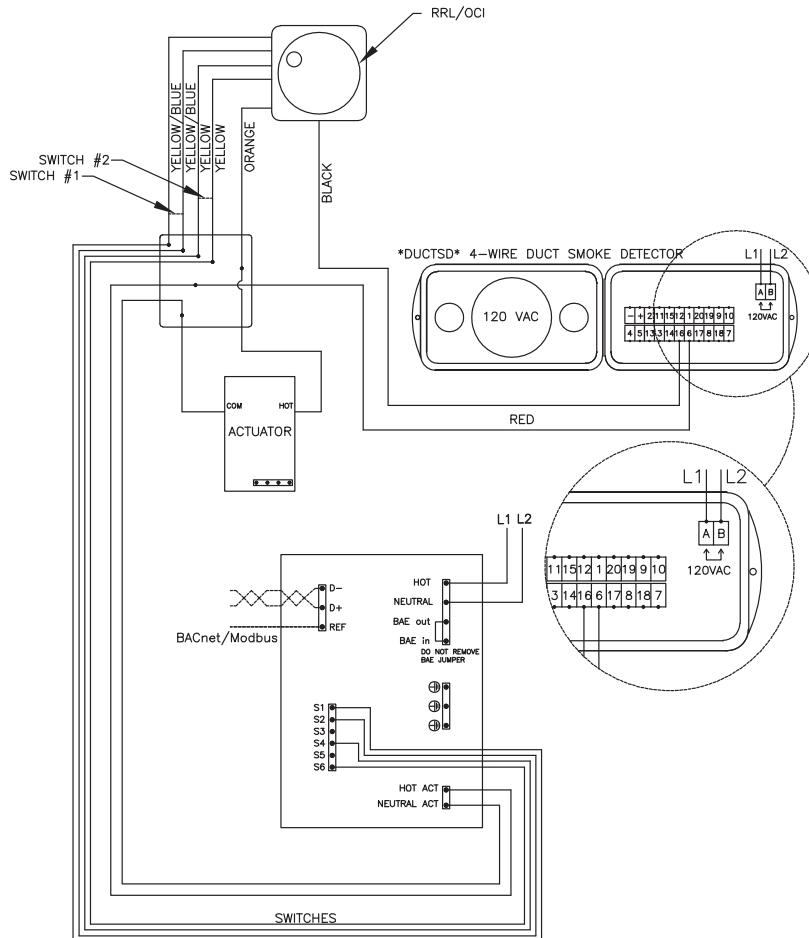


Wiring Diagrams: FSKN120-BAC

RRL/OCI with no flow smoke detector

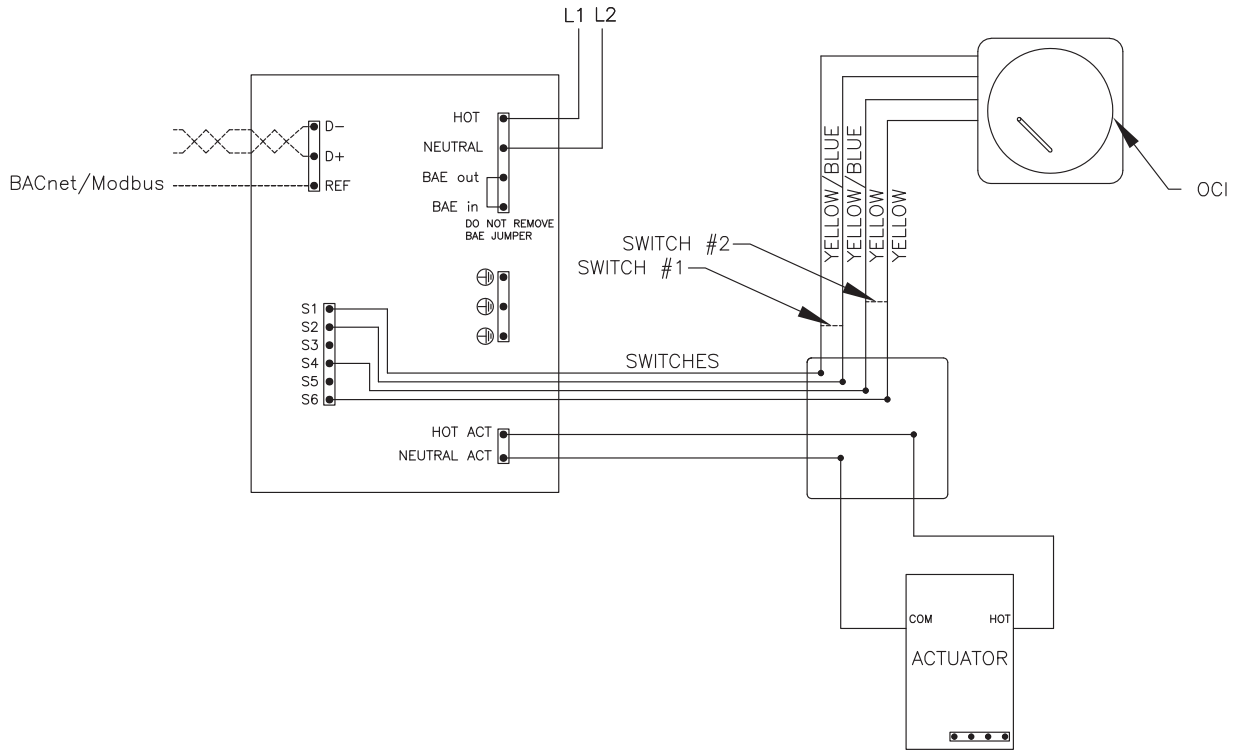


RRL/OCI with low flow smoke detector

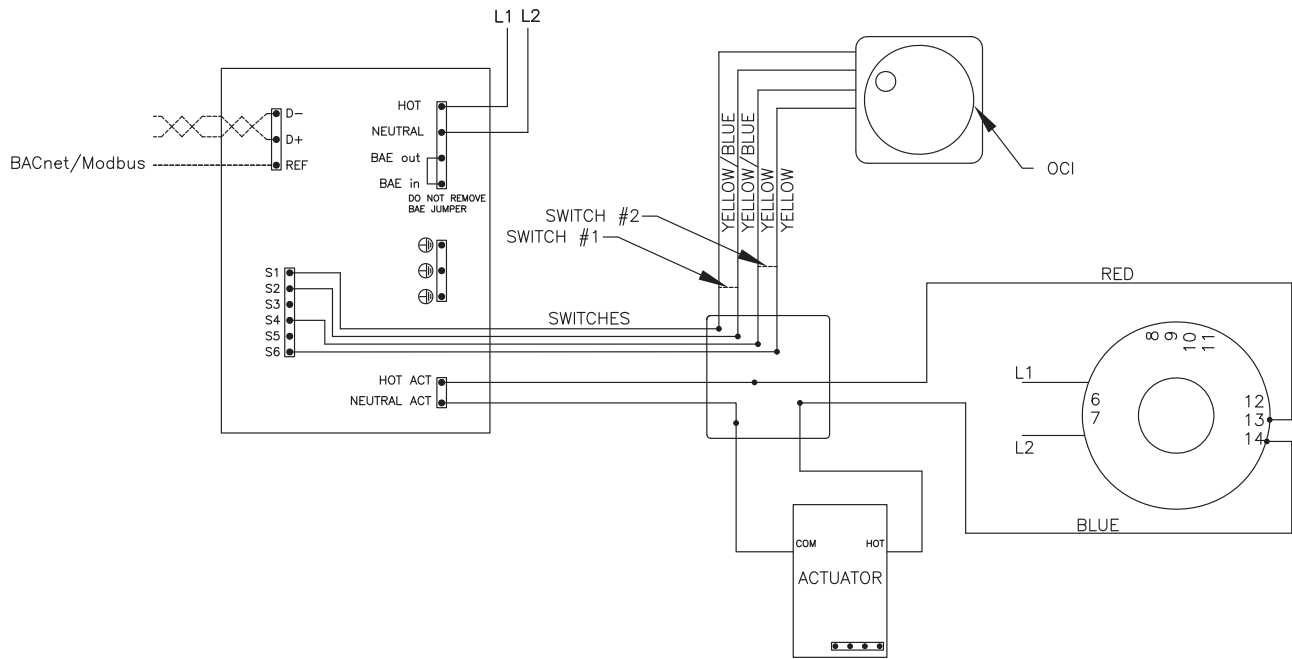


Wiring Diagrams: FSKN120-BAC

OCI

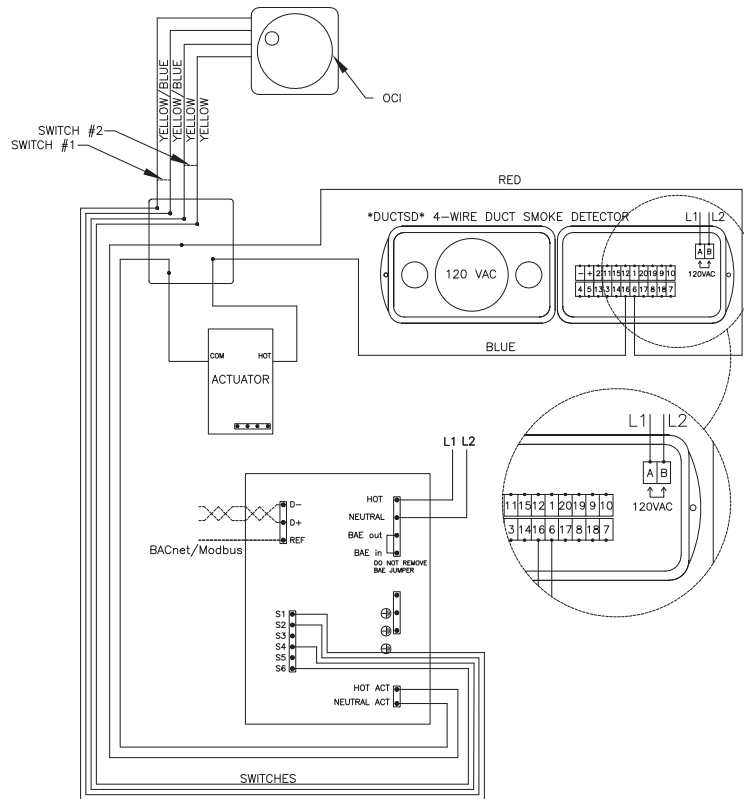


OCI with no flow smoke detector



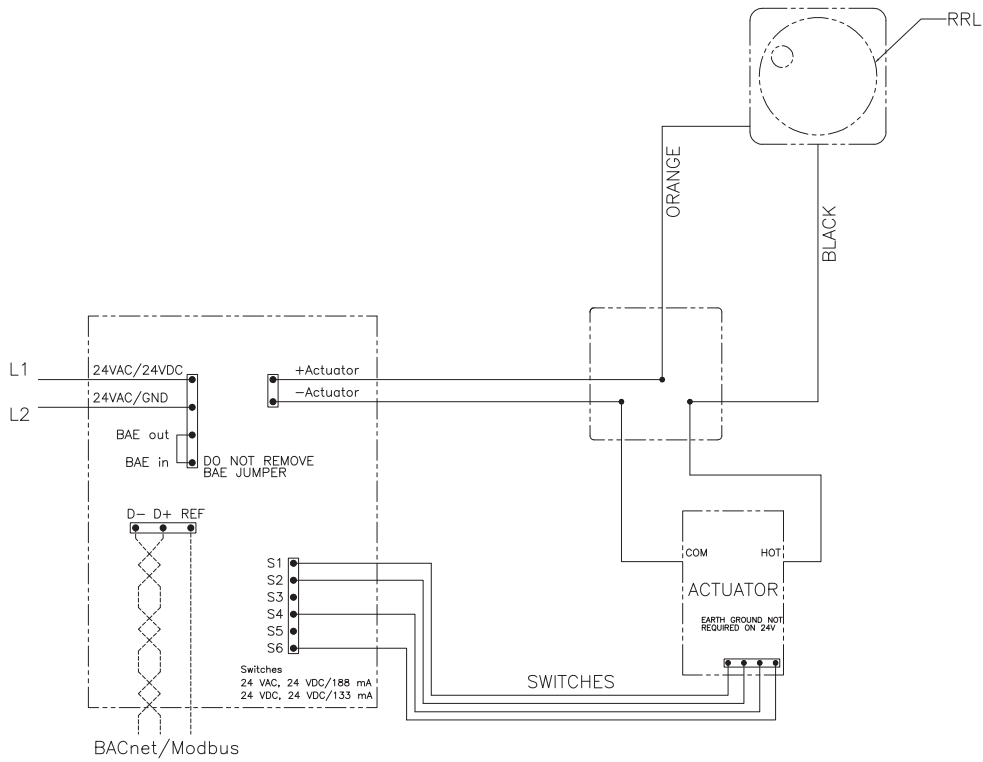
Wiring Diagrams: FSKN120-BAC

OCI with low flow smoke detector

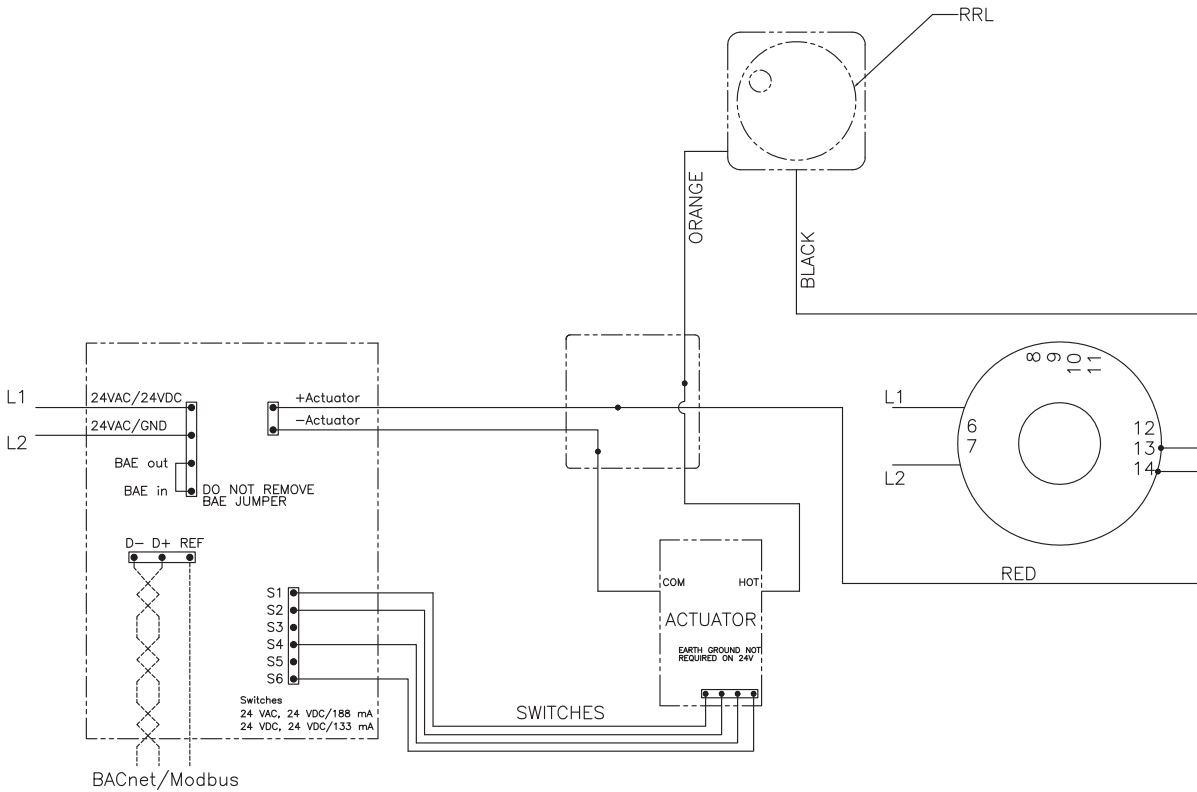


Wiring Diagrams: FSKN24-BAC

RRL

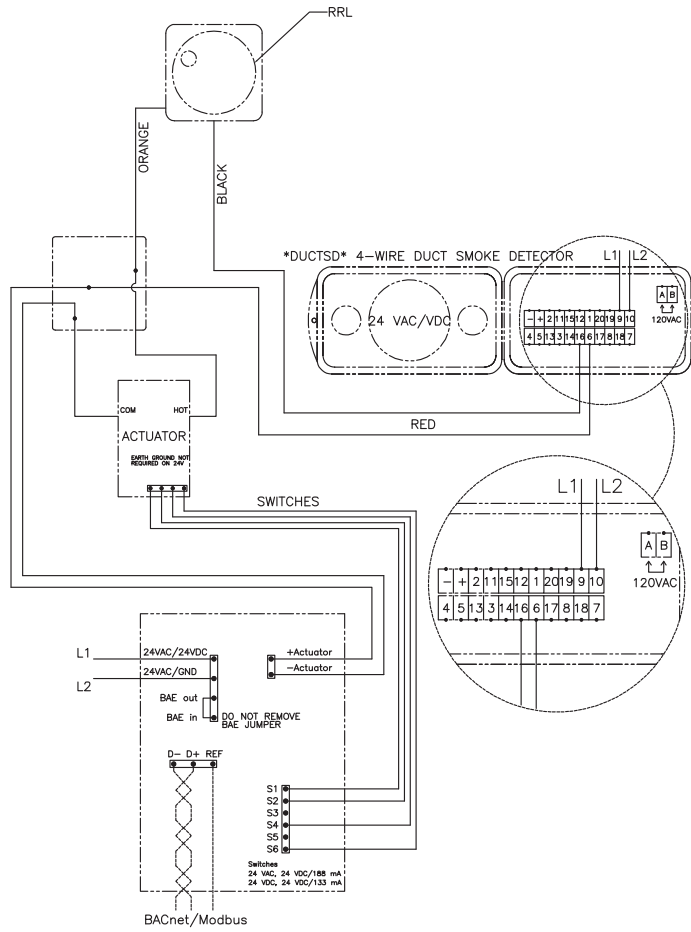


RRL with no flow smoke detector

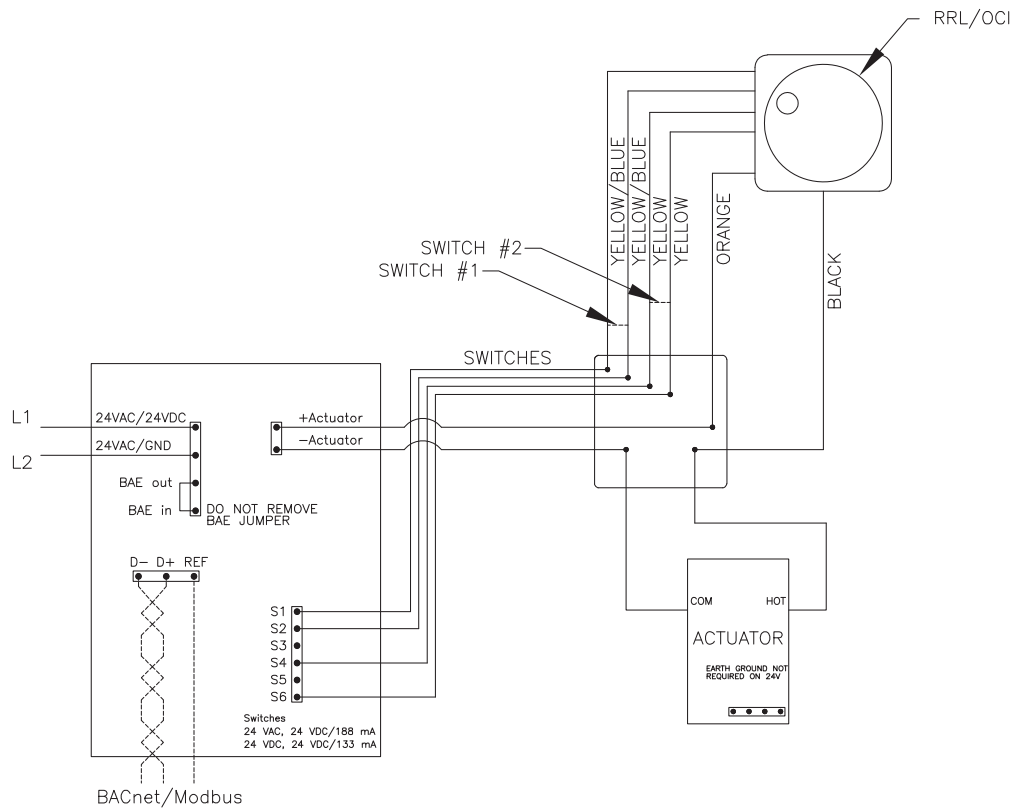


Wiring Diagrams: FSKN24-BAC

RRL with low flow smoke detector

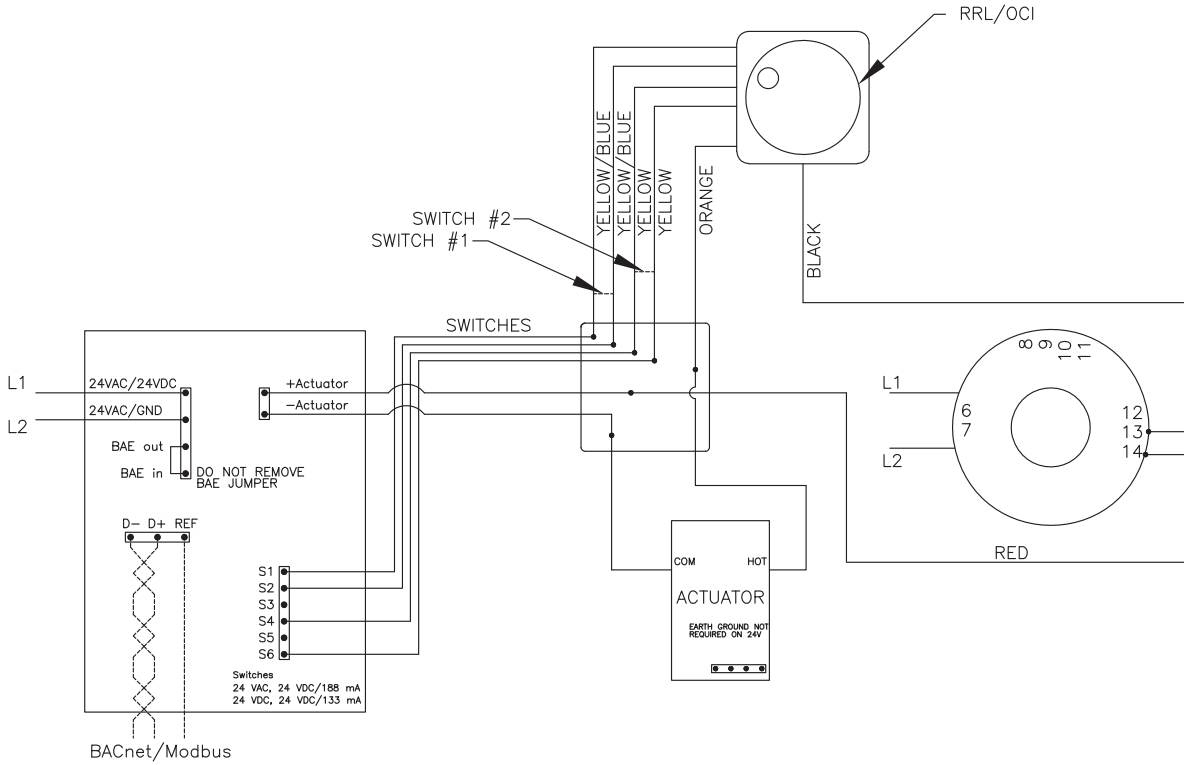


RRL/OCI

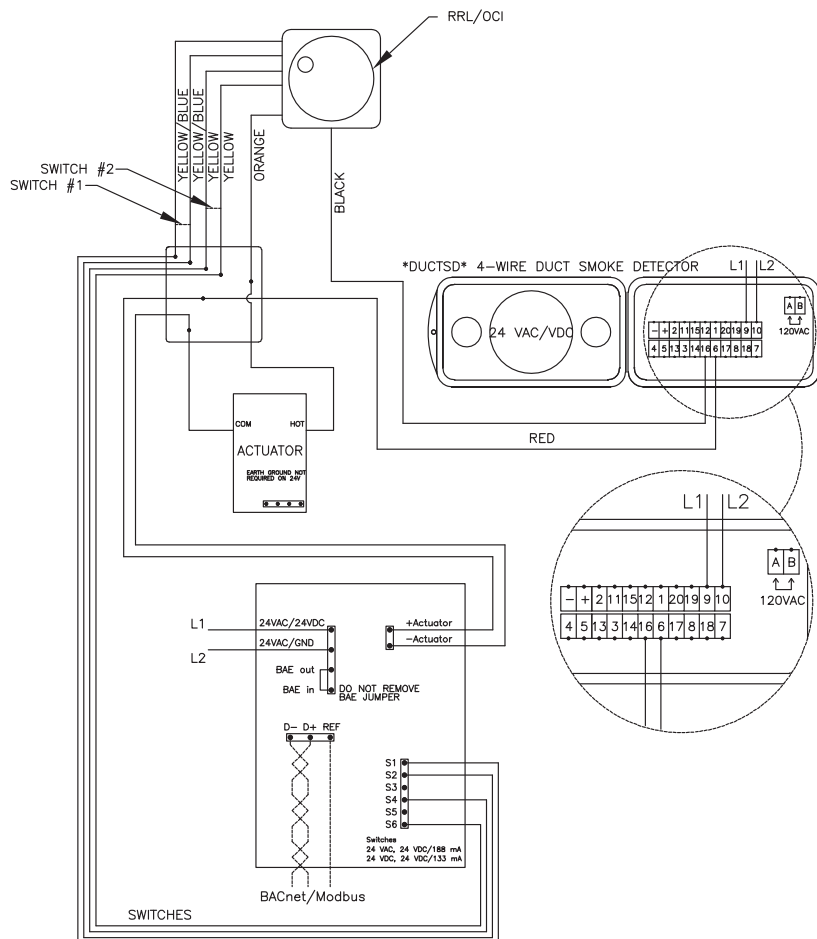


Wiring Diagrams: FSKN24-BAC

RRL/OCI with no flow smoke detector

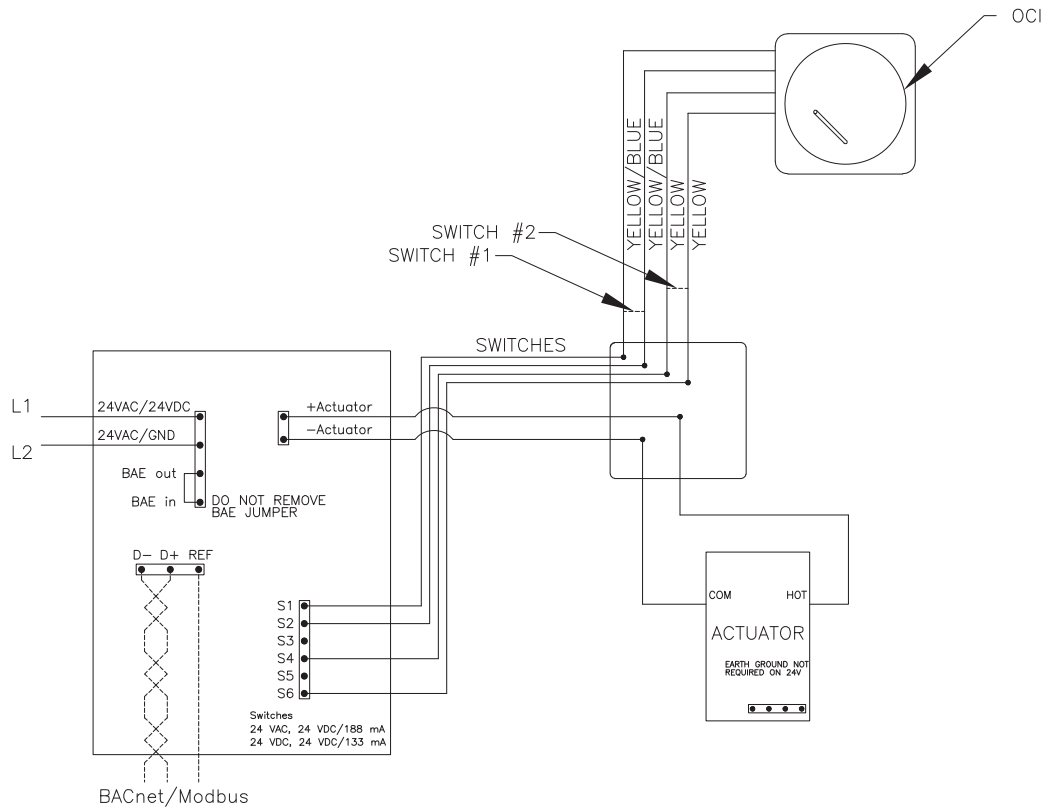


RRL/OCI with low flow smoke detector

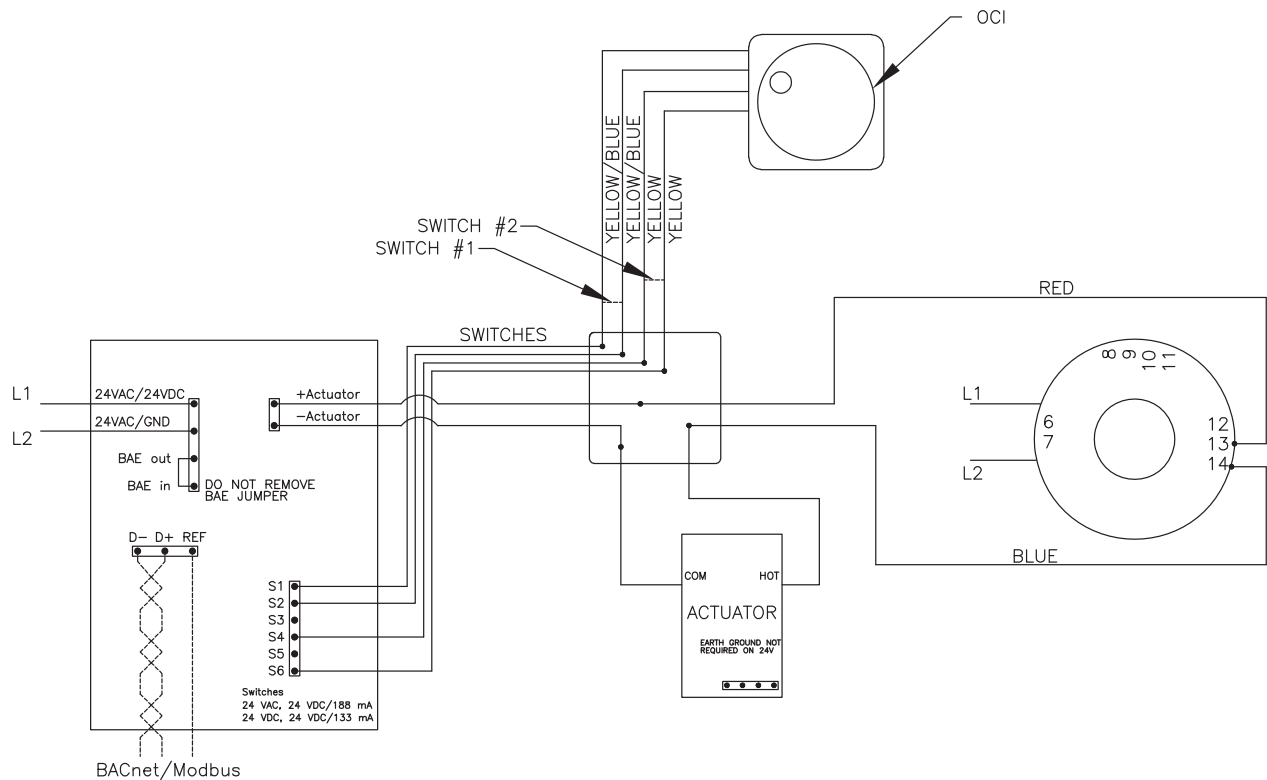


Wiring Diagrams: FSKN24-BAC

OCI

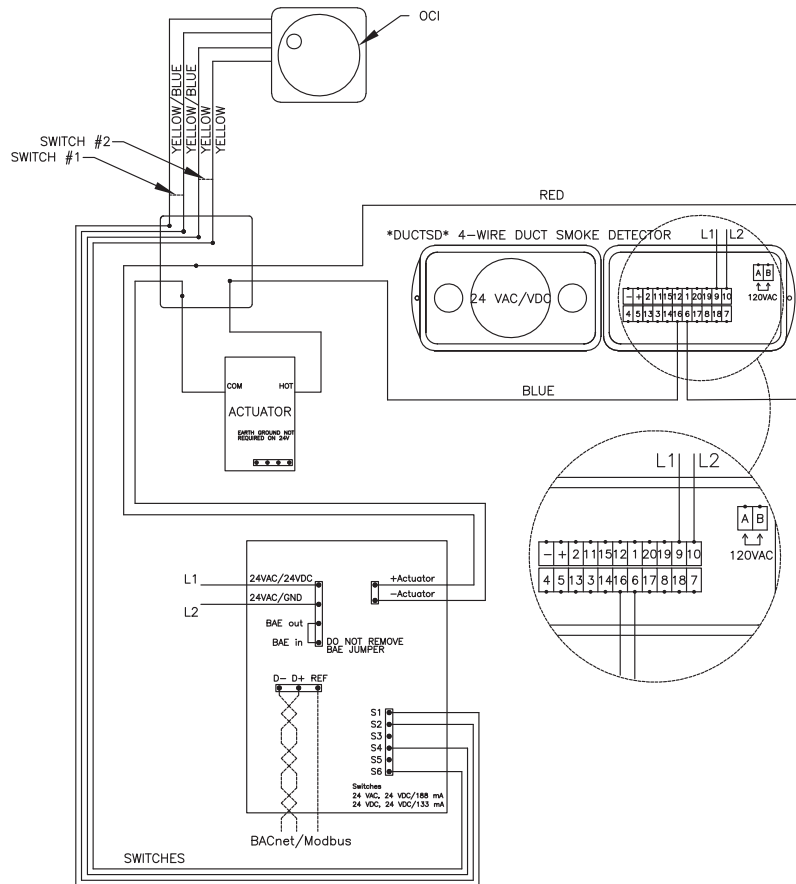


OCI with no flow smoke detector



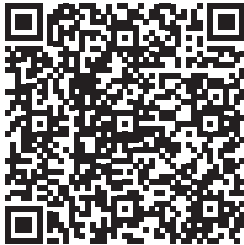
Wiring Diagrams: FSKN24-BAC

OCI with low flow smoke detector



Reference links to Belimo:

[Installation Instructions](#)



[FSKN Application Guide](#)



[FSKN BACnet & Modbus Information](#)



Our Commitment

As a result of our commitment to continuous improvement, Greenheck reserves the right to change specifications without notice.

Product warranties can be found online at Greenheck.com, either on the specific product page or in the literature section of the website at Greenheck.com/Resources/Library/Literature.

