

Application

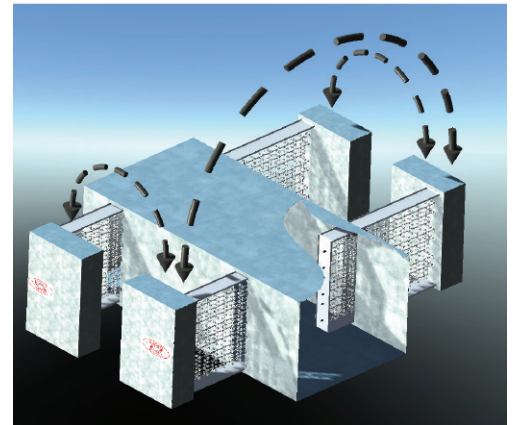
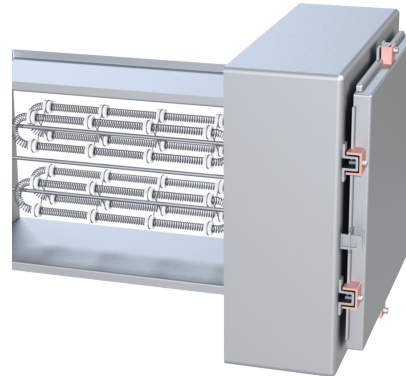
The IDHE-O is a duct heater that is UL listed for outdoor applications. This duct heater can be mounted in multiple positions like the IDHE. The control cabinet is offset from the heating elements similar to traditional heaters. However, the IDHE-O affords the installer the flexibility to position the offset on the left or right as preferred.

The IDHE-O has the following standard features:

- UL listed for Outdoor Applications
- 50/60 Hz compatibility
- Zero clearance rating
- Recessed control box
- Power and control terminal boards
- Automatic reset thermal safety switch for primary over temperature protection
- Heavy gauge G60 construction

Individual maximum capacities are dependent on voltage/phase, control type, and heater dimensions.

Absolute maximum capacity: 478.8 kW



* The Greenheck model IDHE-O duct heater is universally configured to allow airflow in either direction in all mounting orientations.

Construction

| | Standard | Optional |
|-----------------------------|------------------|---|
| Airflow Direction | Universal | - |
| Contactors | Magnetic | - |
| Control Box Offset | Universal | - |
| Control Voltage | 24 Vac | - |
| Element Wire | Standard | 80/20 |
| Heater Control | Stage | SCR, Vernier SCR* |
| Heater Type | Slip in | - |
| Heater Voltage/Phase | 120/1 | 208/1, 208/3, 240/1, 240/3, 277/1, 480/1, 480/3 |
| Material | Galvanized Steel | - |
| Recess (in.) | 1 | - |
| Control Transformer | Unfused | Fused, None |
| Deration (kW) | None | .035, .025 |
| Power Fusing | Required | - |

* Vernier SCR is required in heaters greater than 48 amps to comply with NEC requirements.

Options available:

- Airflow switch (adjustable or fixed set point)
- Disconnect switch with door interlock
- 80/20 element wire
- De-rated coils
- Recess for internally insulated ducts
- Stainless steel hardware
- Time delay relay - delay heater or delay stages

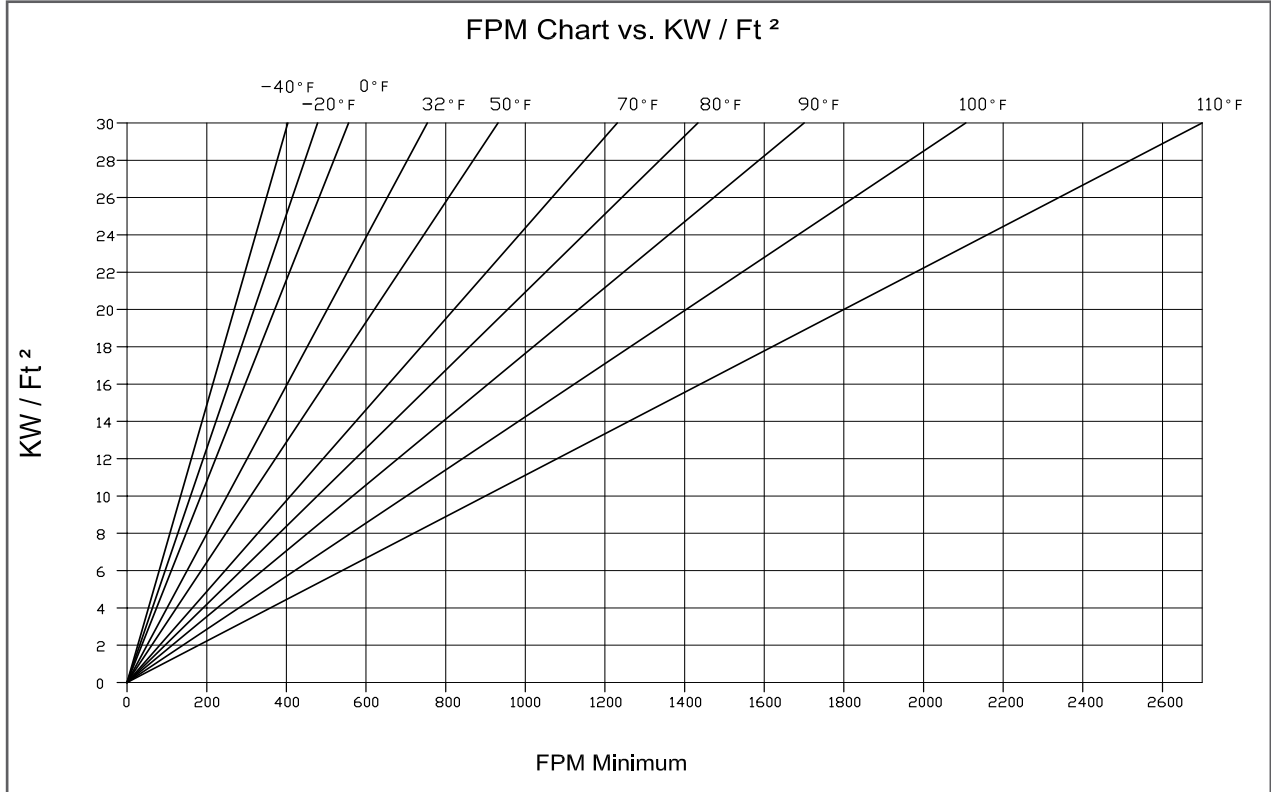
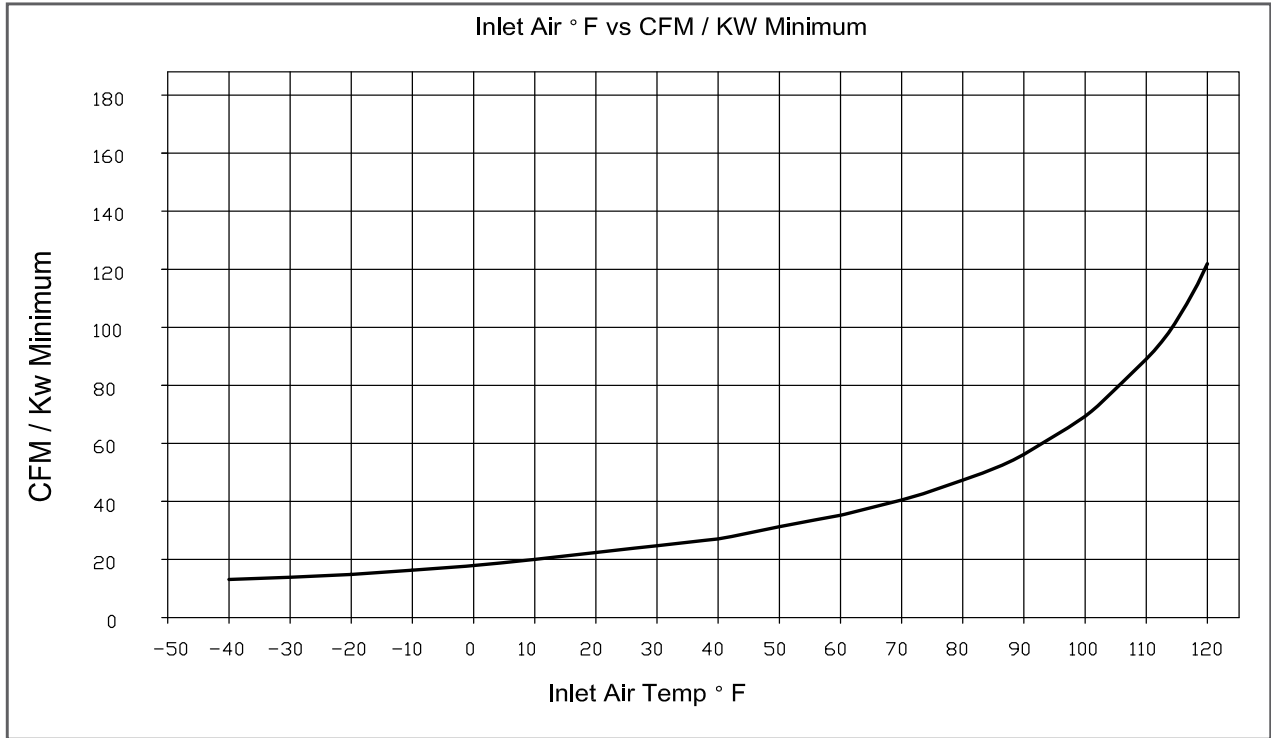
Size Limitations

| W x H | Minimum Size | Maximum Size |
|---------------|--------------|--------------|
| Inches | 8 x 8 | 120 x 58 |
| mm | 203 x 203 | 3048 x 1473 |

* Consult factory for heights larger than 90 in. (2286mm)

IDHE: Air Flow Requirements

Minimum Air Velocity: See charts below
Maximum Inlet Air Temp: 110°F
Maximum Heater KW: 30 KW per Square Foot of Duct Cross Section





[INSTALLATION](#)



[TRIFOLD](#)



[SELECTION GUIDE](#)



[SPECIFICATIONS](#)



[WARRANTY](#)