

## Application

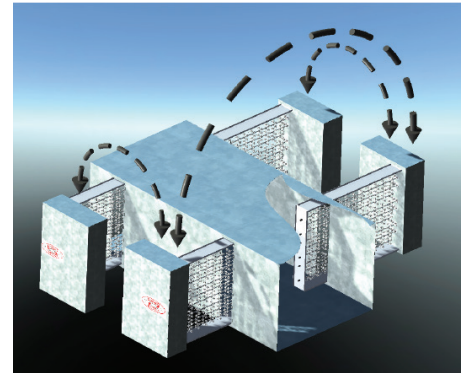
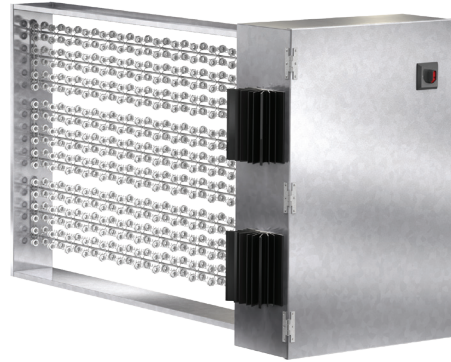
The IDHE series is the industry's first and only electric duct heater approved by UL for multiple mounting positions. This allows the control cabinet to be installed on either side of a horizontal duct or in any orientation on a vertical duct. The control cabinet is offset from the heating elements similar to traditional heaters. However, the IDHE affords the installer the flexibility to position the offset on the left or right as preferred.

The IDHE has the following standard features:

- UL 1996 certified
- 50/60 Hz compatibility
- Zero clearance rating
- Hinged control cabinet cover
- Power and control terminal boards
- Automatic reset thermal safety switch for primary over temperature protection
- Heavy gauge G60 construction

Individual maximum capacities are dependent on voltage/phase, control type, and heater dimensions.

Absolute maximum capacity: 478.8 kW



## Construction

	Standard	Optional
<b>Airflow Direction</b>	Universal	-
<b>Contactors</b>	Magnetic	-
<b>Control Box Offset</b>	Universal	-
<b>Control Voltage</b>	24 Vac	-
<b>Element Wire</b>	Standard	80/20
<b>Heater Control</b>	Stage	SCR, Vernier SCR*
<b>Heater Type</b>	Slip in	Flange
<b>Heater Voltage/Phase</b>	120/1	208/1, 208/3, 204/1, 204/3, 277/1, 480/1, 480/3
<b>Material</b>	Galvanized Steel	-
<b>Recess (in.)</b>	None	1, 2, 3
<b>Control Transformer</b>	Unfused	Fused, None
<b>Deration (kW)</b>	None	.035, .025

\* Vernier SCR is required in heaters greater than 48 amps to comply with NEC requirements.

## Size Limitations

W x H	Minimum Size	Maximum Size
<b>Inches</b>	8 x 8	120 x 144*
<b>mm</b>	203 x 203	3048 x 3658

\* Consult factory for heights larger than 90 in. ( 2286mm)

\* The Greenheck model IDHE duct heater is universally configured to allow airflow in either direction in all mounting orientations.

## Options available:

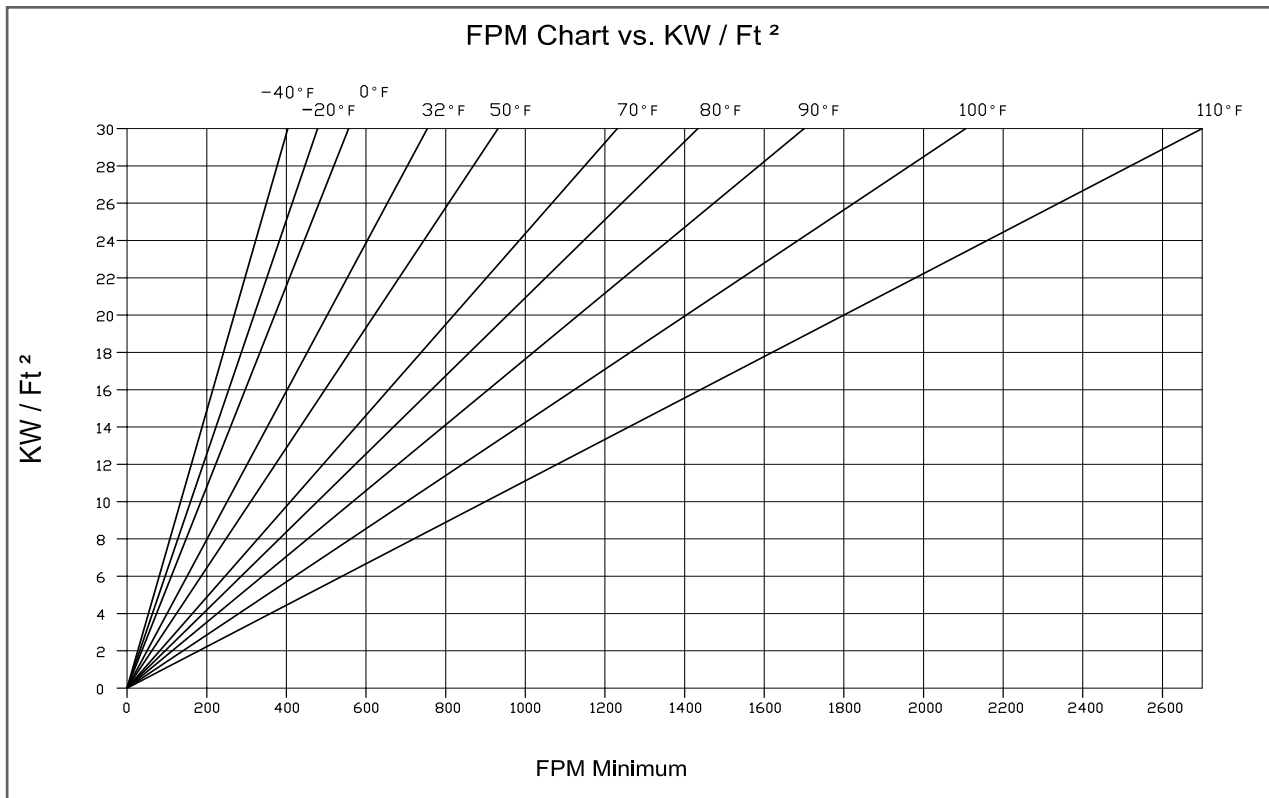
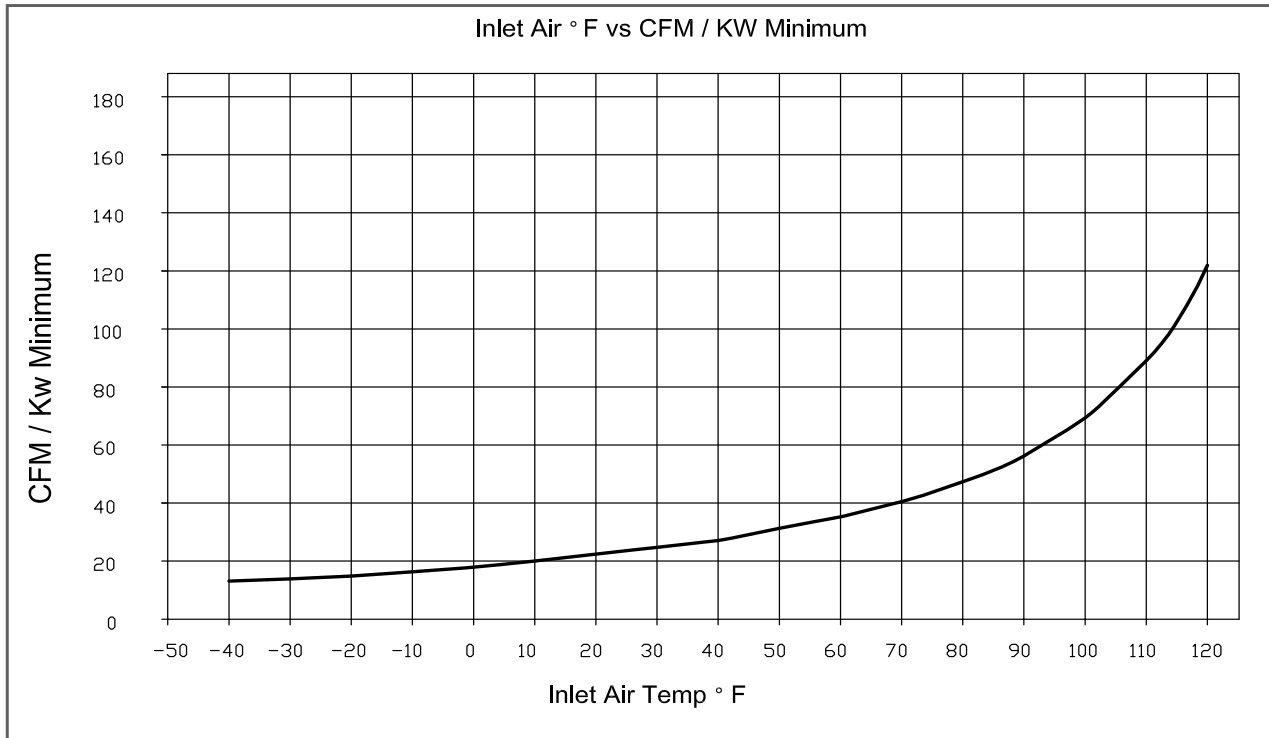
- Airflow switch (adjustable or fixed set point)
- Disconnect switch with door interlock
- Dust tight box with gasketed door
- Room thermostat
- Duct thermostat (available with SCR or Vernier SCR control)
- Pilot light
- Vapor barrier
- 80/20 element wire
- De-rated coils
- Recess for internally insulated ducts
- Stainless steel hardware
- Time delay relay - delay heater or delay stages

# IDHE: Air Flow Requirements

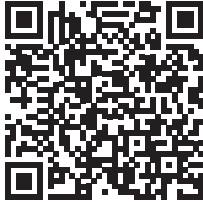
Minimum Air Velocity: See charts below

Maximum Inlet Air Temp: 110°F

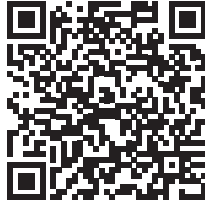
Maximum Heater KW: 30 KW per Square Foot of Duct Cross Section



[Duct Heater Trifold](#)



[Installation Instructions](#)



[Specifications](#)



[Warranty](#)



[Damper Selection Guide](#)

