

Application

Model MBD-10 is a manual balancing damper designed to regulate the flow of air in a HVAC system. They are not intended to be used in applications as a positive shut off or for automatic control. The manual quadrant has an integral pointer for easy visual blade position indication.

Ratings

Pressure

2 in. wg (0.5 kPa) - pressure differential

Velocity

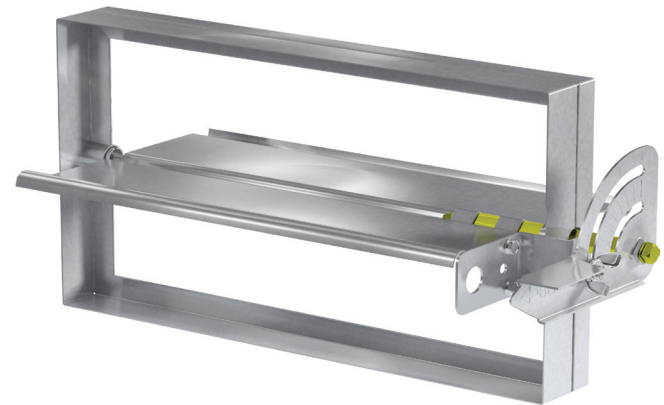
Up to 2000 fpm (10.2 m/s)

Temperature

Up to 180°F (82°C)

Construction

Construction	Standard	Optional
Frame Material	Galvanized steel	-
Frame Thickness	22 ga. (0.8mm)	-
Frame Depth	1.832 in. (47mm)	-
Blade Material	Galvanized steel	-
Blade Thickness	20 ga. (1mm)	-
Axle Material	½ in. (13mm) Plated Steel	-
Operator	⅜ in. (10mm) sq. locking manual quadrant	Cable Operator
Operating Shaft	⅜ in. (10mm) sq., 2½ in. (64mm) long extension	-



*W & H dimension furnished approximately ¼ in. (6mm) undersize.
Manual quadrant is sent as a kit for field installation.

Options and Accessories

- 1½ in. (38mm) standoff bracket
 - 2 in. (51mm) standoff bracket
- (The standoff bracket with axle pin accommodates for the thickness of external duct insulation.)
- Cable Operator
 - Round Ceiling Cup or Square Wall/Ceiling Plate
 - 3, 6, or 9 ft (.9, 1.8, 2.7 m) cable length

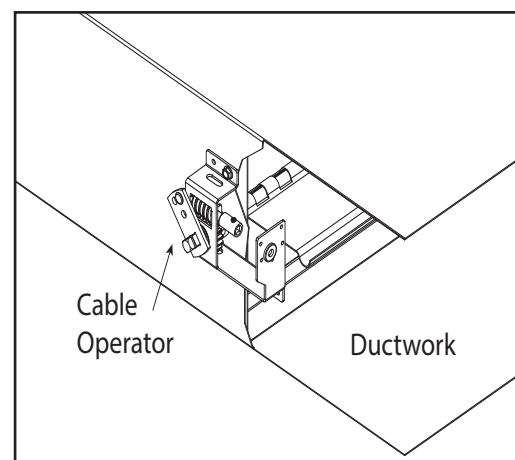
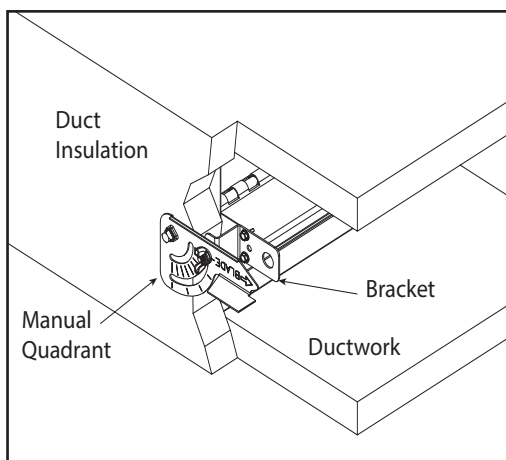
Size Limitations

W X H	Minimum	Maximum*
Inches (mm)	6 x 4 (152 x102)	36 x 12 (914 x 305)

Cable Operator - Optional

Cable operator is an option with either a round ceiling cup or square wall/ceiling plate design. Cable lengths are offered in 3, 6, or 9 ft (.9, 1.8, 2.7 m).

Stand-off Bracket



Document Links

[Installation Instructions](#)



[Catalog](#)



[Damper Warranty](#)



[Specifications](#)



[Interactive Damper Guide](#)

