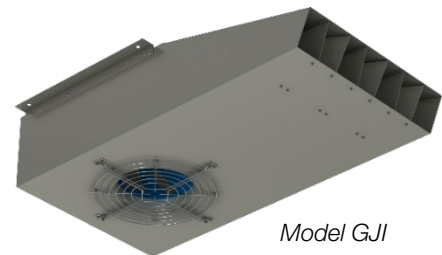


TO: All Greenheck Representatives
FROM: Dan Jore
Application Engineer, Sr., Centrifugal and Vane Axial
DATE: March 30, 2020
SUBJECT: GreenJet® Model GJI



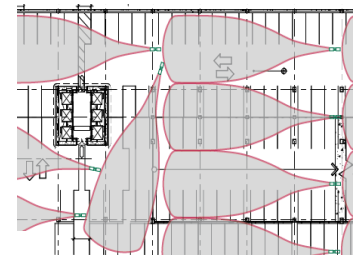
We are pleased to introduce GreenJet® model GJI, available in the April CAPS® (4.32) release. Model GJI is the latest ductless fan product for use in parking garages or other unducted applications to move air from one side of a building to another. This lower profile jet fan is only 11.8 inches. It increases vehicle clearance providing significant savings in excavation and construction costs.

Model GJI has integrated discharge vanes for 80 feet of throw distance at a 200 fpm terminal velocity and 6 lbs. of thrust force (25N). It quickly pushes and mixes hazardous vehicle emission towards parking garage exhaust duct areas. An electronically commutated (EC) motor provides fixed or variable speed control based on contaminate levels by accepting a 0-10 VDC or Modbus signal. With a maximum flow rate of 2,120 cfm, the GreenJet model GJI is more efficient than other centrifugal jet fans.

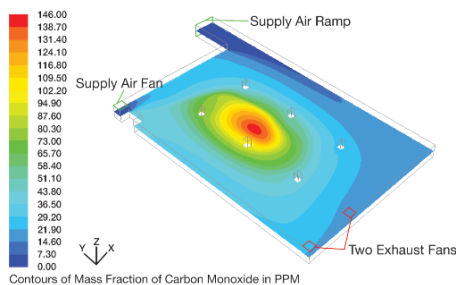


Model GJI

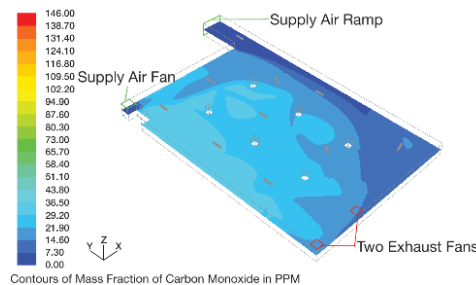
Greenheck will assist you to determine a suggested quantity and placement of fans with a fan velocity profile, determined using computational fluid dynamics (CFD) analysis, on the garage layouts. We also offer a project analysis CFD service showing parking garage airflows and carbon monoxide (CO) concentration levels without and with jet fans.



GreenJet Velocity Profiles added to a parking garage



CO analysis without jet fans



CO analysis with jet fans

GreenJet velocity profiles and technical information are available on www.greenheck.com.

Please contact us at vektor.support@greenheck.com or by phone at 1-877-835-8677 for more information.