

Bulletin: 30-20

TO: All Greenheck Representatives
FROM: Ryan Brooks
Application Engineering, Axial and Inline
DATE: May 26, 2020
SUBJECT: Greenheck Inline MERV 13 Filter



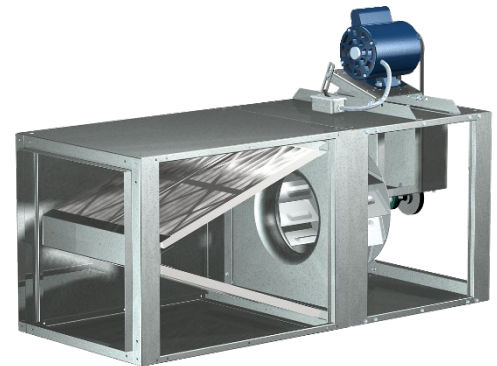
We are pleased to announce the addition of MERV 13 filters to the SQ and BSQ product lines. Effective with the CAPS® 4.32 release (April 2020), MERV 13 filters are now a standard option. Custom orders are no longer required. As a standard product option, the static pressure correction factor in CAPS accounts for the addition of the MERV 13 filter while sizing the fan, eliminating manual calculations.

The MERV 13 filters increase the competitive advantages in bidding Greenheck SQ and BSQ fans for health care facilities that are included in the ASHRAE 170 requirements for filtration levels.

ASHRAE 170 requires MERV 13 filters for:

- Laboratory work areas
- Procedure rooms
- Semi-restricted spaces
- Nursing facilities

For additional support and information, please contact the inline support team at 1-800-984-8713, extension 3 or email aifans@greenheck.com.



Model BSQ with filter box