

Bulletin: 34-20

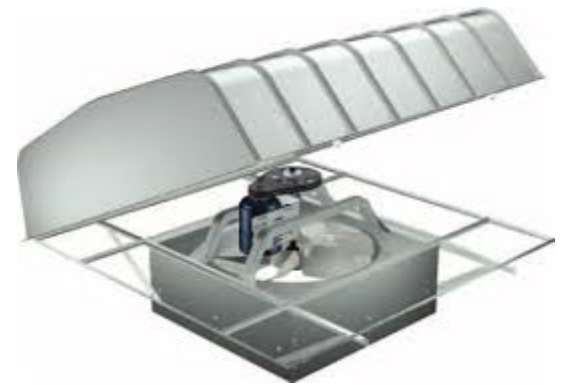
TO: All Greenheck Representatives
FROM: Derek Hawley
Product Manager, Axial & Inline
DATE: July 13, 2020
SUBJECT: Hooded Roof Propeller Fan Update



Hood assemblies on hooded roof propeller fans sizes 42 inch and smaller are now shipped loose and knocked down in sections as part of the CAPS® 4.32 (April) release. This allows the hood and fan to be transported to the roof location separately. This change is comparable to the current size range 48-72 inches already available. These units (42 inch and smaller) also have a new lower base price, reduced by 5%!

Models impacted by this change include:

- RBCE, RBCF, RBE, RBS, RBF
- RCE3, RCS3
- RE2, RS2
- RPDR, RPBR, RPDRF, RPBRF



Please note-submittals in CAPS 4.32 reflect this change for these models, however, catalogs will not immediately reflect this change.

Please email the Axial & Inline support team at aifans@greenheck.com with questions you may have.