

Bulletin: 63-21

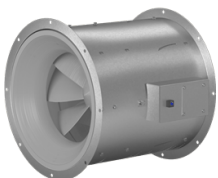
TO: All Greenheck Representatives
FROM: Matt Gaedtke
Segment Manager, Laboratory and Fume Exhaust Systems
DATE: November 8, 2021
SUBJECT: Model TCB Retirement and New QEI Additions



We are pleased to announce introduction of new QEI and QEID models. These new models along with tighter fan energy index (FEI) have eliminated the need for model TCB inline fan. The retirement of the TCB inline fan will begin as part of the December 4.37 CAPS® release. This legacy product has served us well, but the addition of new **QEI and QEID Series 100** models better meet the efficiency and application requirements. The following information details the process for obsoleting model TCB:

- Projects with Existing TCB Selections - CAPS 4.37 (Dec 2021) will allow you to edit and order any existing TCB selections through at least April 2022.
- New Tubular Inline Projects – CAPS 4.37 will NOT allow you to pick a new TCB but we will instead direct you to the variety of QEI and QEID products.
- Models TCBRS and TCBRU – The TCBRS and TCBRU “specialty constructions” are NOT affected in CAPS 4.37.

Please make the move to the new QEI and QEID models now!



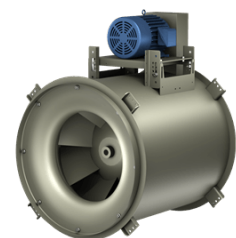
QEID-FJ (FumeJet®)

- Light fumes and flammables
- Direct drive with “Spark A construction”
- Efficient mixed flow impeller and electronically commutated motor (ECM) technology



QEID-100

- Clean air exhaust, supply or return
- Indoor or outdoor applications
- Efficient mixed flow impeller with optional ECM technology



QEI-100

- NEW aluminum/Spark A options in December 2021 CAPS
- Indoor or outdoor applications
- Efficient mixed flow impeller with optional VFD packages

For any TCB-related questions or office training on our expanded offering of QEI and QEID tubular mixed flow fans, please contact the fume exhaust and tubular inline team at vektor.support@greenheck.com.