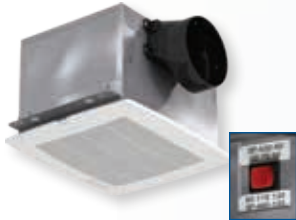


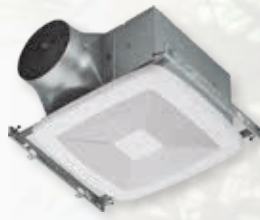
## Model SP ceiling exhaust fans...exclusively from Greenheck!



### Constant CFM, 3 Speed

- SP-A50-90-VG
- SP-A90-130-VG

With flow selector switch



### Premium Plus

- SP-VG

Built-in minimum ventilation and time delay user interface.



### Premium

- SP-A, sizes 50-1550

Shown with optional ceiling radiation damper.



### Deluxe

- SP-B, sizes 50-200

Shown with optional lighted LED grille



### Wall Mounting

- SP-L50
- SP-L80



### Value

- SP-C50

### Plug and Play Accessories

For New Construction or Retrofits

Choose from one of three available sensors on select model SP fans.



Motion + Humidity  
Combination Sensor



Motion  
Detector

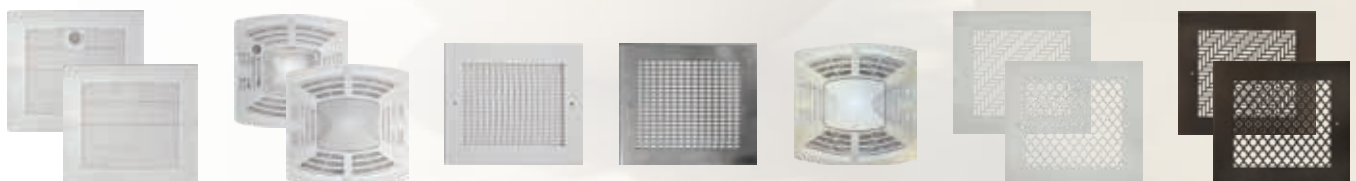


Humidity  
Sensor

## Grille Options

A wide variety of grille options

- Designer (standard) - white finish
- Lighted grille - high efficiency LED light
- Aluminum - white enamel finish
- Stainless steel - polished stainless steel finish
- Decorative - white finish
- Architectural - aluminum, white or oil rubbed bronze powder coated. Tuscan and Herringbone patterns.



## Codes and Standards

ASHRAE 62.2 provides guidelines for minimum Indoor Air Quality (IAQ) standards in multifamily and residential buildings. One of the key provisions of this standard sets minimum ventilation rates. Select Greenheck fans are able to provide low speed continuous ventilation and cycle to high speed upon activation of a switch or sensor.

Many Greenheck model SP fans comply with these codes and standards, helping ensure clean and healthy indoor air:

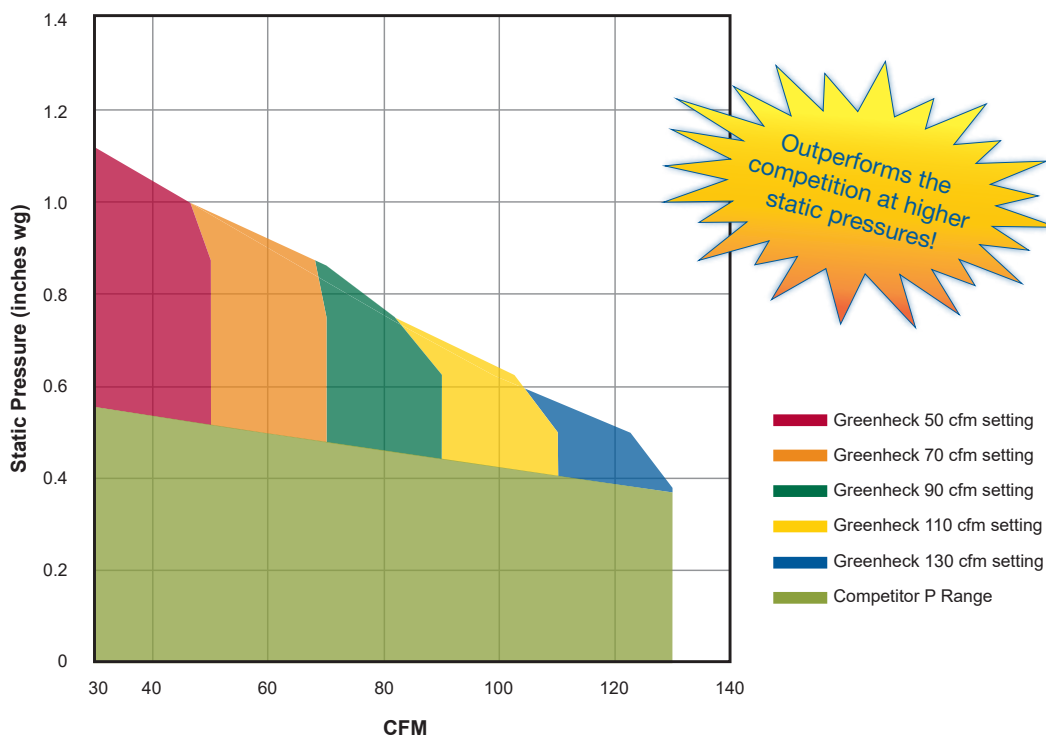
- ASHRAE 62.2
- CALGreen
- CA Title 24
- Washington State Energy Code

Products that earn the ENERGY STAR® prevent greenhouse gas emissions by meeting strict energy efficiency guidelines set by the U.S. Environmental Protection Agency and the U.S. Department of Energy.



Fans that are ENERGY STAR® certified include: SP-A70, SP-A90, SP-A110, SP-A125, SP-A190, SP-A200, SP-A250, SP-B70, SP-B80, SP-B90, SP-L50, SP-L80, SP-80-VG, SP-80L-VG, SP-110-VG, SP-110L-VG, SP-A50-90-VG, SP-A90-130-VG

## SP-A-VG Performance versus Competition



For complete model selections, options and accessories, refer to Greenheck's Centrifugal Ceiling and Cabinet Exhaust Fans catalog or contact your local Greenheck Representative.

