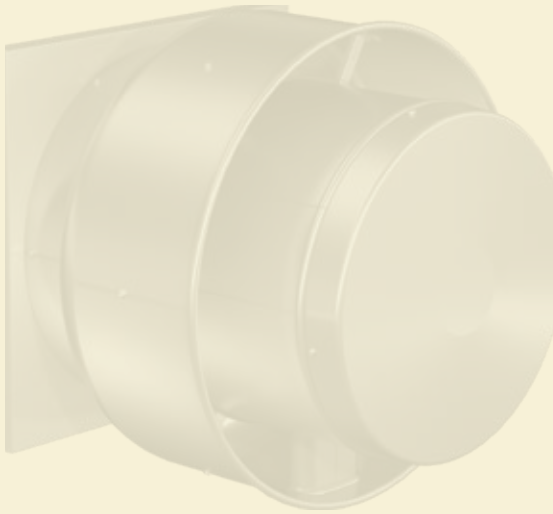


FastPass

Get your fans **FAST** • **Save Money** • **Beat the competition**



- The Fast Pass program offers a three week guaranteed lead time for high volume options and motors on CUBE/CUE and GB/G
- Save money—Fast Pass uses a standard multiplier—no premiums
- Fast Pass will allow you to serve your customers better and position you above the competition
- Fast Pass options are easy to identify in CAPS and are available now

If you have questions, contact PRVfans@greenheck.com or call 1-800-984-8713 PRESS 5



Fast Pass Fan Selection		
Qualifying Fast Pass Options	CUBE/CUE	GB/G
Construction Features		
Seismic Rated	X	X
Galvanized Birdscreen	X	X
Polished Steel Shaft Material	X	X
Plated Steel Fasteners	X	X
Motor Features		
UL 705	X	X
UL 762	X	N/A
Spare Belts	X	X
VG Motors	X	X
Dial on Motor, 0-10 VDC VG Controls	X	X
115/208/230 V single phase, ODP, std. efficiency motors, certain HP restrictions apply	X	X
208/230/460 V three phase, ODP, std. efficiency motors, certain HP restrictions apply	X	X
Accessories		
Sidewall Mount	X	N/A
Wall Grille	X	N/A
WD Damper (galvanized only)	X	X
Curbs	X	X
Hinged Curb Cap (shipped loose)	X	X
Heat Baffle	X	N/A
Disconnect Switch NEMA-1 toggle no overload protection	X	X
Motor Starter	X	X

Pictured (left to right): CUE-180 sidewall mounted, CUBE-360, and G-143.

On the sizing tab, enter your performance information. Once you select your fan size, the Fast Pass box in the upper right corner will indicate if this selection is available in the Fast Pass Program.

Model QD / Stock **Fast Pass** Yes

Model Sizing Fan Curves Configuration Drawings SDRs / Notes AMCA Shipping

Basic inputs (required)

Volume (CFM) Airstream Temp. (F)
 External SP (in. wg) Elevation (ft)

Advanced inputs (optional)

Drive Type Allow Motor S.F. High Temperature
 Sidewall Mounted Speed Controller Static Pressure Corrections
 Spark Resistance Apply VFD
 Performance Baffle Relaxed Constraints

Model Name	Relative Cost	Operating Cost / Yr (USD)	Actual Volume (CFM)	Total External SP (in. wg)	Drive Type	Fan Speed (RPM)	Max Fan Speed (Selected) (RPM)	Max Fan Speed (RPM)	Operating Power (hp)
CUE-131-A	1.00	135	2,366	0	Direct	1725	1725	-	0.48
CUE-131-VG	1.55	103	2,366	0	Direct	1725	1725	1725	0.48
CUE-141-VG	1.64	90	2,486	0	Direct	1372	1550	1550	0.72

When you navigate to the configuration tab to select additional construction options, motor options, or accessories, you will notice the same indication box in the upper right. If an option is not available with the Fast Pass Program, it will be specifically outlined in the sales bill.

Model Best Available 3 Day **Fast Pass** No

Model Sizing Fan Curves Configuration Drawings SDRs / Notes AMCA Shipping

Construction Motor Accessories

Electrical Accessories

Disconnect Switch Wiring Pigtail

Fan Accessories

Sidewall Mounting Curb Cap Adapter Aluminum Rub Ring
 Roof Curb Damper Wall Grille
 Curb Extension Coatings Unit Warranty
 Hinged Curb Cap Grease Containment Special Nameplate
 Curb Seal Tie Down Points

Product information grid

Description	List Price (U...)	Best Available	Fast Pass	Weight (lb)
Accessories	256	3 Day	No	10
UL/cUL 705 Listed - "Power Ventilators" Switch, NEMA-1, Toggle, Shipped with Unit	-	-	-	2
Junction Box Mounted & Wired	-	-	-	-
Hinged Base (Attached)	213	3 Day	No	8
Foam Curb Seal (Attached)	43	-	-	-
Unit Warranty: 1 Yr (Standard)	-	-	-	-

All qualifying Fast Pass fans can be easily identified on the job summary page. Any non-Fast Pass items will be subject to the standard delivery time, which can vary based on order volume. If you have both Fast Pass and non-Fast Pass items on an order, the order must be split to ensure the Fast Pass items are shipped on the three week lead time.