

Models DGX-P / MSX-P

Direct Drive Plenum Supply Fan Offering for Make-Up Air

Direct Drive Make-Up Air

- **Backward-curved plenum supply fan**
- **Direct drive arrangement**
- **800 - 48,000 cfm**
- **Up to 4 in. wg external static pressure**
- **Factory-mounted variable frequency drive**



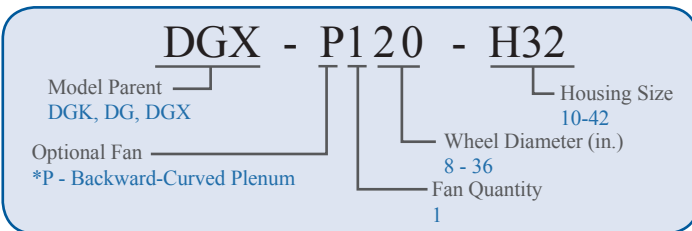
Models DGX and MSX can now be selected with a direct drive, backward-curved plenum supply fan! The backward-curved plenum fan offering is an excellent complement to Greenheck's already diverse make-up air product line. The current forward-curved fan offering is very competitive for price-sensitive applications and provides a cost-effective solution for low external static pressure requirements (typically less than 2 in. wg). The DGX-P and MSX-P models are capable of handling higher external static pressures up to 4 in. wg.

With the addition of the backward-curved plenum fan, Greenheck and our sales partners can now offer additional solutions for a variety of make-up air applications. These applications include new or retrofit industrial facilities that require the supply fan to handle high external static pressures caused by extensive ductwork or higher efficiency filtration. Lastly, the improved fan efficiency of the backward-curved plenum fan can lead to lower motor horsepower and energy usage when compared to an equivalently sized forward-curved supply fan.

Direct Drive Technology

The direct drive arrangement on the backward-curved plenum fan option for the DGX-P and MSX-P brings many additional value added benefits to the end user. The factory-mounted variable frequency drive (VFD) provides an inherent soft-start for the supply fan. The absence of belts and sheaves also reduces maintenance requirements and simplifies air balancing in the field. All of these features are specifiable and strong selling points to the end user!

DGX-P / MSX-P	CFM
H-12	800 - 3,200
H-22	2,000 - 9,000
H-32	4,500 - 16,000
H-35	10,000 - 26,000
H-38	20,000 - 36,000
H-42	28,000 - 48,000

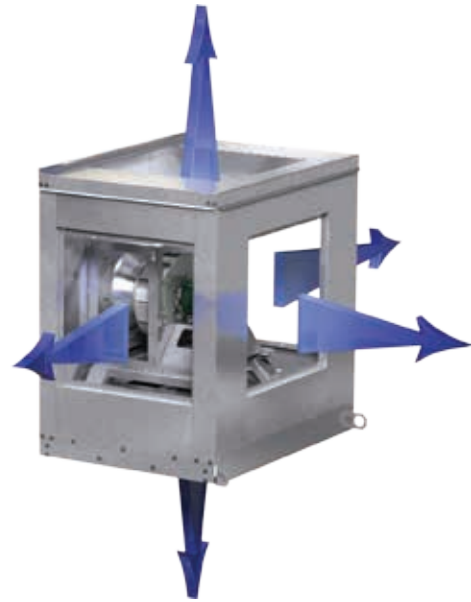


Models DGX-P / MSX-P

Configurable Discharge Locations

The DGX-P and MSX-P are designed for both indoor and outdoor installations. These models offer additional discharge options that were not previously available. This discharge flexibility provides further solutions for simplifying confined installations.

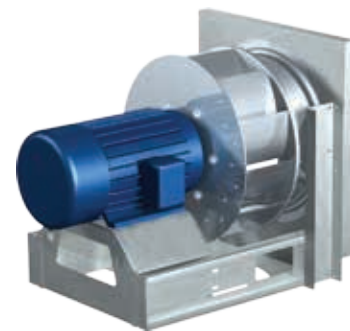
Available Discharge Locations					
Options	Bottom	Top	Left	Right	Horizontal
Forward-Curved	X	X	-	-	X
Backward-Curved	X	X	X	X	X



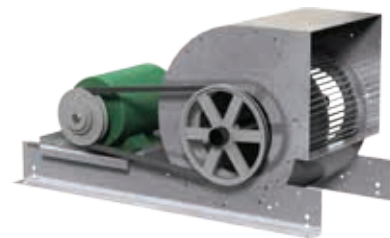
Forward-Curved Supply Fans compared to Backward-Curved Plenum Supply Fans

(Housing Sizes: 12, 22, 32, 35, 38 and 42)

	Forward-Curved	Backward-Curved
Airflow	800-48,000 cfm	800-48,000 cfm
Max HP Limitation	50 hp	60 hp
External Static Pressure Limit	2 in. wg	4 in. wg
VFD by Factory	Optional	Standard
Drive Arrangement	Belt	Direct
Neoprene Isolation	Standard	Standard
Spring Isolation	Optional	-
Double-Wall Construction	Optional	Standard
Hinged Access	Optional	Standard
Direct-Fired Heating (DGX)	Standard	Standard
Electric Heating (MSX)	Optional	Optional
Steam Heating (MSX)	Optional	Optional
Hot Water Heating (MSX)	Optional	Optional
Chilled Water Cooling	Optional	Optional
Split DX Cooling	Optional	Optional
Evaporative Cooling	Optional	Optional
PDX Cooling	Optional	-



Backward-Curved Plenum



Forward-Curved

