

Web User Interface (Web UI)

Standard on Models RV, RVE, and RVC

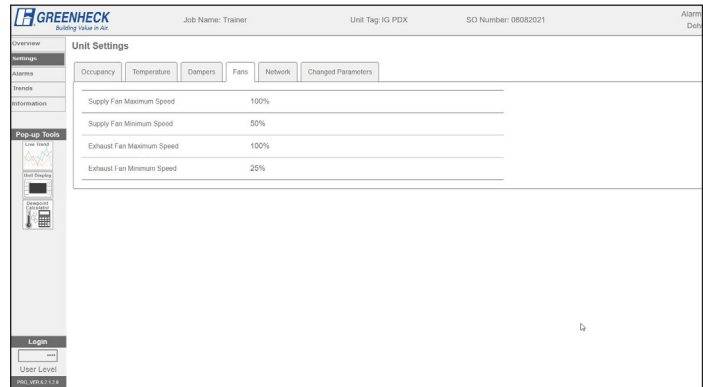
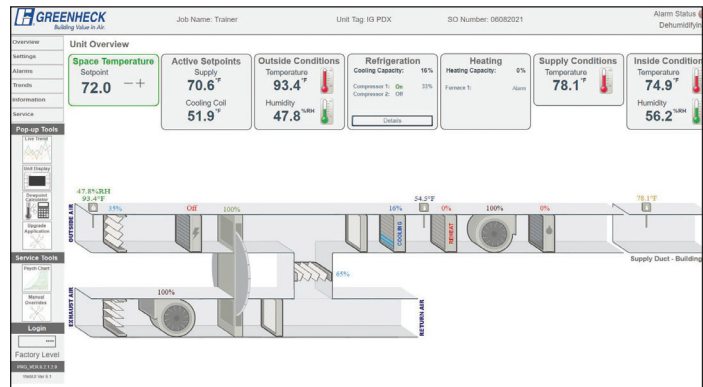
Greenheck models RV, RVE, and RVC microprocessor controllers come standard with a web user interface allowing the unit to be viewed and controlled from a web browser. A full graphic, specific to the unit selected, allows for monitoring and control of the unit without a building management system (BMS). Other features include full control display access, customizable data trending, and service contact information.

Easy to Use

- Easily view all unit data from a web screen on a laptop or tablet
- Graphical, at-a-glance home screen provides intuitive information and ability to change setpoints
- View and change schedules, damper and fan settings, and interoperability parameters from the Settings page

Quick and Simple Start-up

- During installation, connect a laptop or tablet to view unit data on a large screen vs. using a small handheld device speeding up the process
- Use the unit graphic to provide real-time visual validation that the unit is working as designed
- Make use of convenient manual override and trending functions to confirm proper operation
- During daily operation, use Overview or Settings pages to check or change settings without going to the roof
- When servicing or troubleshooting, check the Alarms page or view the Refrigeration detail page to learn more about performance issues
- View factory set-up, auto trending data for every system point
- Allows access to the unit controller through the building network



Key Features

- **Standard** Web UI is standard within all microprocessor controllers and accessed using Ethernet at the unit or through a standard web browser via the building's network.
- **The Overview page allows a quick system glance**, where it's easy to change a setpoint or view inside/outside/supply conditions or heating/cooling capacities.
- **Change multiple settings on the Unit Settings page** including occupancy schedule, temperature, dampers, fans, and BMS/network settings.
- **The Trends page displays auto trending of all factory I/O points for a rolling seven-day period**, logged every minute. View all or some logged data for all sensor values, set points, and control outputs, or use the live trend function for just-in-time data.
- **The Alarms page allows one-click access to all alarms**, current and previous. The alarms snapshot captures operating conditions preceding an alarm condition, making troubleshooting much easier.
- **The Service page displays content most useful for system analysis**, including a list of all I/O points, and access to manual overrides and trending functions to confirm proper operation.
- **The Refrigeration Detail page** provides information about compressor status, circuit pressures, and temperatures — all without the need to connect gauges!
- **The Web UI can function as a low-cost BMS** with an Ethernet connection.

The image displays a comprehensive view of the Greenheck Web User Interface. At the top left, a navigation menu includes 'New! Settings', 'Check Alarms', 'Live Trends', 'Unit Display', 'Dew Pt Calc', 'Service Tools', and 'Login'. The main 'Unit Overview' page shows a 'Supply Temperature Setpoint' of 72.0°F, which can be adjusted. It also displays 'Active Setpoints' for Supply (72.0°F) and Cooling Coil (49.0°F), 'Outside Conditions' (27.8°F, 18.8%RH), and 'Cooling Detail' (0% capacity). A central diagram of the HVAC system shows 'OUTSIDE AIR', 'EXHAUST AIR', 'RETURN AIR', 'COOLING', 'HEATING', and 'SUPPLY AIR' ducts with various sensors and actuators. Below this, the 'Unit Settings Page' allows configuration of fan speeds and static pressures. The 'Overview Refrigeration Detail Page' provides 'Compressor Status' and 'Refrigeration Circuit Detail' for 'Circuit A', showing discharge pressure (68.13 psi) and saturated temperature (13.85°F).

Web User Interface

