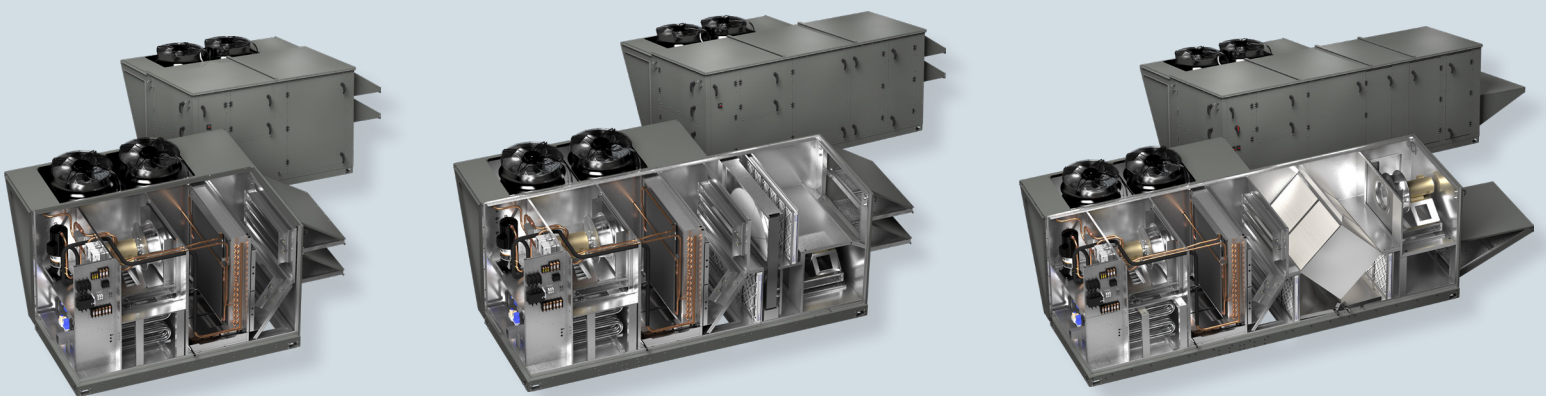
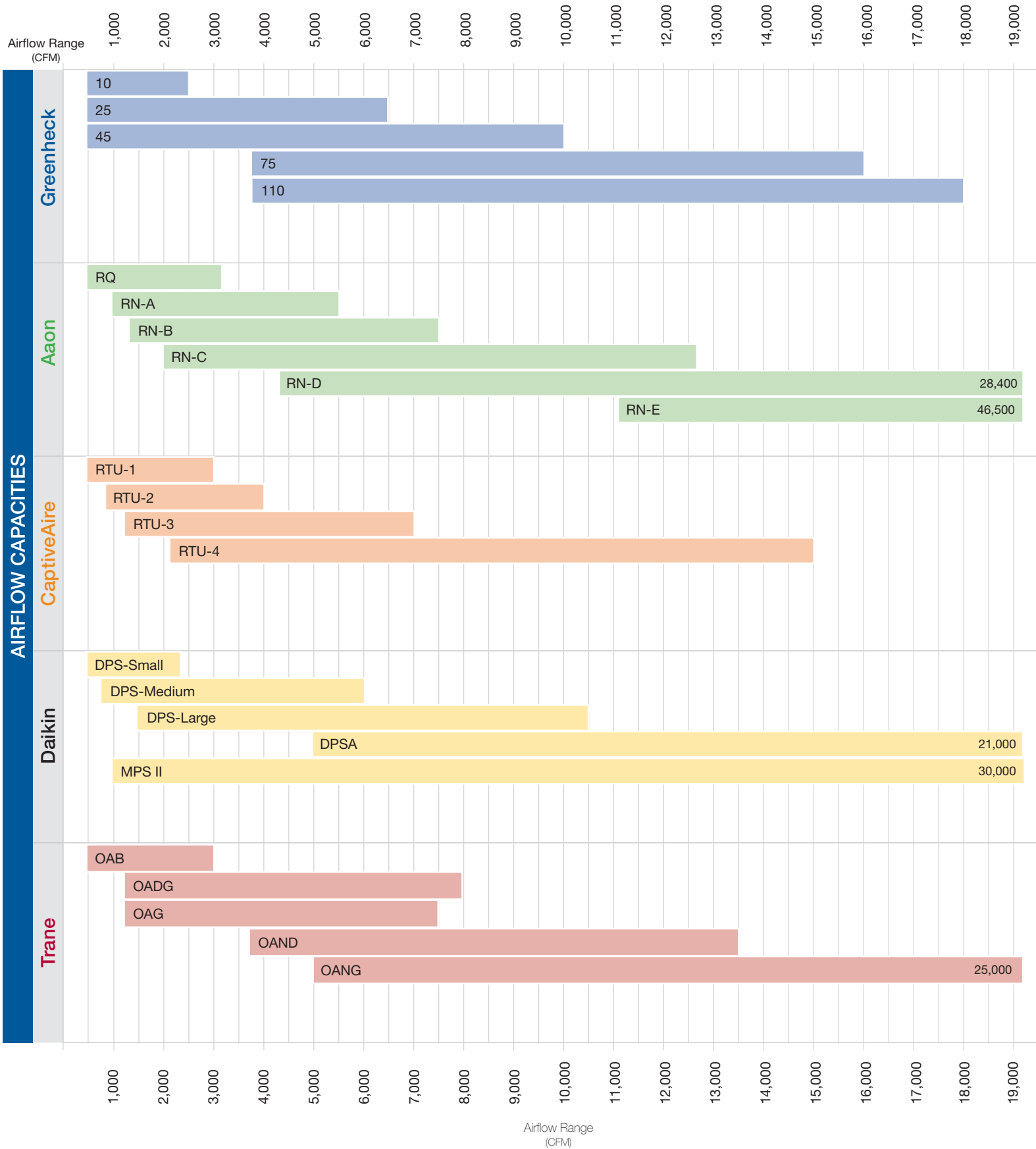


Comparison Guide

Dedicated Outdoor Air Systems
Models RV, RVE & RVC



Supply Airflow Capacities Comparison without Energy Recovery



RV-10 Comparison

- Greenheck Advantage
- Competitor Advantage
- Equal Standing

		Greenheck RV-10	Aaon RQ	CaptiveAir RTU-1	Daikin DPS-Small	Trane OAB
COMPETITIVE PRICING			⊖			⊖
Supply Airflow	Min CFM	500	500	500	500	500
	Max CFM	2,500	3,200	3,000	2,400	3,000
Packaged DX Cooling	Min Tons	3	2	5	3	3
	Max Tons	7	6	7.5	6	9
	Tonnage Options	3, 4, 5, 6, 7	2, 3, 4, 5, 6	5, 6, 7.5	3, 4, 5, 6	3, 4, 5, 6, 7, 8, 9
	Lead Compressor Type	Inverter	Two-Stage, Digital, Inverter	Inverter	Inverter	Digital, Inverter
	Quantity of Compressors/Circuits	1 / 1	1 / 1	1 / 1	1 / 1	1 / 1
	Modulating Head Pressure Control (Condensing Fan)	Standard All EC	Standard All AC Optional All EC	Standard All EC	Standard All EC	Standard All AC Optional All EC or VFD
Indirect Gas Furnace	Min MBH	75	60	50	80	50
	Max MBH	200	160	200	160	200
	Furnace Size (MBH)	75, 100, 150, 200	60, 100, 140, 160	50, 75, 100, 125, 150, 200	80, 120, 160	50, 75, 100, 125, 150, 200
	High Turndown	Up to 16:1	Up to 12:1	Up to 6:1	Up to 5:1	Up to 20:1
Unit Construction	2" R13 injected foam insulation Std. 2" base insulation	2" R13 injected foam insulation Std. no base insulation (optional)	2" R13 foam board insulation No base insulation	1" R7 injected foam insulation Std. 1" base insulation	2" R13 foam board insulation Std. 2" base insulation	
Unit Coating	Std. Exterior Coating	Std. Exterior Coating	Std. Galvanized Steel Opt. Exterior Coating	Std. Exterior Coating	Std. Exterior Coating	
Unit Base Dimensions (bottom connections) (LxWxH - approx. inches)	82 x 44 x 58 ^A	82 x 44 x 51 ^A	76 x 45 x 42 ^A	67 x 54 x 41 ^A	97 x 52 x 55 ^A	
Weight (approx. pounds)	1,180	1,130	1,200	1,440	1,520	
Supply Discharge Option	Bottom or Side ^B	Bottom or Side	Bottom, Side, Top ^B	Bottom or Horizontal	Bottom or Side ^B	
Return Intake Option	Bottom or End ^B	Bottom or Side	Bottom or Side	Bottom or End	Bottom or Side ^B	

^A Not including side condensing section or weatherhood when applicable

^B Dependent on unit configuration and options

RV-25 Comparison

- Greenheck Advantage
- Competitor Advantage
- Equal Standing

		Greenheck RV-25	Aaon		CaptiveAir		Daikin	Trane
			RN-A	RN-B	RTU-2	RTU-3	DPS - Medium	OADG
COMPETITIVE PRICING								
Supply Airflow	Min CFM	500	1,000	1,300	800	1,250	750	1,250
	Max CFM	6,500	5,500	7,500	4,000	7,000	6,000	8,000
Packaged DX Cooling	Min Tons	5	6	9	8	12.5	7	10
	Max Tons	15	10	15	10	20	15	20
	Tonnage Options	5, 7, 10, 12.5, 15	6, 7, 8, 10	9, 11, 13, 15	8, 10	12.5, 15, 20	7, 10, 12, 15	10, 12, 15, 17, 20
	Lead Compressor Type	Inverter	Two-Stage, Digital, Inverter		Inverter		Inverter	Digital
	Quantity of Compressors/Circuits	1 / 1	1 / 1	2 / 2	1 / 1		1 / 1	2 / 1
	Modulating Head Pressure Control (Condensing Fan)	Std. Lead EC Optional All EC	Standard All AC Optional All EC or VFD		Standard All EC		Standard All EC	Standard All AC Opt. All EC or VFD
Air-Source Heat Pump	Min Tons	5	6	9	8	12.5	7.5	10
	Max Tons	15	10	15	10	20	15	20
	Tonnage Options	5, 7.5, 10, 12.5, 15	6, 7, 8, 10	9, 11, 13, 15	8, 10	12.5, 15, 20	7, 10, 12, 15	10, 12, 15, 17, 20
	Lead Compressor Type	Inverter	Digital		Inverter		Inverter	Digital
	Quantity of Compressors/Circuits	1 / 1 (5-7.5-ton) 2 / 2 (10-15-ton)	1 / 1	2 / 2	1 / 1		1 / 1	2 / 1
	ASHP Lockout (°F)	10°	0°		9°		0°	0°
	Secondary Heat Options	Electric, Indirect Gas, Hot Water	Electric, Indirect Gas, Hot Water		Electric, Indirect Gas		Electric, Indirect Gas, Hot Water	Electric, Indirect Gas, Hot Water
Indirect Gas Furnace	Min MBH	100	90	195	50	150	200	50
	Max MBH	300	210	390	300	500	400	350
	Furnace Size (MBH)	100, 200, 300	90, 150, 210	195, 292, 390	50, 100, 150, 200, 250, 300	150, 200, 300, 400, 500	200, 300, 400	50, 75, 100, 125, 150, 200, 250, 300, 350
	High Turndown	Up to 16:1	Up to 11:1	Up to 10:1	Up to 16:1		Up to 10:1	Up to 20:1
Unit Construction	2" R13 injected foam insulation Std. 2" base insulation	2" R13 injected foam insulation Std. no base insulation (optional)		2" R13 foam board insulation No base insulation		1" R7 injected foam insulation Std. 1" base insulation	2" R13 foam board insulation Std. 2" base insulation	
Unit Coating	Std. Exterior Coating	Std. Exterior Coating		Std. Galvanized Steel Opt. Exterior Coating		Std. Exterior Coating	Std. Exterior Coating	
Unit Base Dimensions (bottom connections) (LxWxH - approx. inches)	99 x 52 x 59 ^A	82 x 44 x 44 ^A	88 X 59 X 50 ^A	80 x 54 x 61 ^A	97 x 65 x 69 ^A	91 x 58 x 56 ^A	110 x 63 x 69 ^A	
Weight (approx. pounds)	2,700	1,400	2,600	1,730	2,650	2,403	3,415	
Supply Discharge Option	Bottom or Side ^B	Bottom		Bottom, Side, Top ^B		Bottom	Bottom or Side ^B	
Return Intake Option	Bottom, End, Side ^B	Bottom		Bottom or Side		Bottom	Bottom or Side ^B	

^A Not including side condensing section or weatherhood when applicable

^B Dependent on unit configuration and options

RV-45 Comparison

- Greenheck Advantage
- Competitor Advantage
- Equal Standing

		Greenheck RV-45	Aaon RN-C	CaptiveAire		Daikin DPS - Large	Trane OAG
				RTU-3	RTU-4		
COMPETITIVE PRICING			⊖	⚠	⊖	⊖	⊖
Supply Airflow	Min CFM	500	2,000	1,250	2,200	1,500	1,250
	Max CFM	10,000	12,600	7,000	15,000	10,500	7,500
Packaged DX Cooling	Min Tons	15	11	12.5	22	16	10
	Max Tons	30	30	20	50	28	30
	Tonnage Options	15, 17.5, 20, 25, 30	11, 13, 16, 18, 20, 25, 30	12.5, 15, 20	22, 25, 30, 40, 50	16, 18, 20, 25, 28	10, 12, 15, 17, 20, 22, 25, 30
	Lead Compressor Type	Inverter	Two-Stage, Digital, Inverter	Inverter		Inverter	Digital, Inverter
	Quantity of Compressors/Circuits	1 / 1 (15-17.5-ton) 2 / 1 (20-30-ton)	1 / 1 (16-ton) 2 / 2	1 / 1	1 / 1 (22-30-tons) 2 / 2 (40-50-tons)	1 / 1 (16-20-tons) 2 / 2 (25-28-tons)	2 / 2
	Modulating Head Pressure Control (Condensing Fan)	Standard Lead EC Optional All EC	Standard All AC Opt. All EC or VFD	Standard All EC		Standard All EC	Standard All AC Opt. All EC or VFD
Air-Source Heat Pump	Min Tons	15	14	12.5	22	16	Option not available
	Max Tons	30	30	20	30	20	
	Tonnage Options	15, 17.5, 20, 25, 30	14, 16, 18, 20, 25, 30	12.5, 15, 20	22, 25, 30	16, 18, 20	
	Lead Compressor Type	Inverter	Digital	Inverter		Inverter	
	Quantity of Compressors/Circuits	2 / 2	2 / 2	1 / 1		1 or 2	
	ASHP Lockout (°F)	10°	0°	9°		0°	
Secondary Heat Options	Electric, Indirect Gas, Hot Water	Electric, Indirect Gas, Hot Water	Electric, Indirect Gas		Electric, Indirect Gas, Hot Water		
Indirect Gas Furnace	Min MBH	300	270	150	200	300	100
	Max MBH	500	540	500	800	600	600
	Furnace Size (MBH)	300, 400, 500	270, 405, 540	150, 200, 300, 400, 500	200, 300, 400, 500, 600, 700, 800	300, 450, 600	100, 125, 150, 200, 250, 300, 350, 400, 500, 600
	High Turndown	Up to 15:1	Up to 18:1	Up to 16:1	Up to 18:1	Up to 12:1	Up to 20:1
Unit Construction	2" R13 injected foam insulation Std. 2" base insulation	2" R13 injected foam insulation Standard no base insulation (optional)	2" R13 foam board insulation No base insulation		2" R13 injected foam insulation Std. 2" base insulation	2" R13 foam board insulation Std. 2" base insulation	
Unit Coating	Standard Exterior Coating	Standard Exterior Coating	Standard Galvanized Steel Optional Exterior Coating		Standard Exterior Coating	Standard Exterior Coating	
Unit Base Dimensions (bottom connections) (LxWxH - approx. inches)	109 x 68 x 73 ^A	138 x 64 x 60 ^A	97 x 65 x 69 ^A	118 x 87 x 83 ^A	77 x 125 x 71 ^A	121 x 74 x 66 ^A	
Weight (approx. pounds)	4,500	4,000	2,650	6,250	3,990	4,550	
Supply Discharge Option	Bottom or Side ^B	Bottom or End	Bottom, Side, Top ^B		Bottom or Horizontal	Bottom or Side ^B	
Return Intake Option	Bottom, End, Side ^B	Bottom, End, Side	Bottom or Side		Bottom	Bottom or Side ^B	

^A Not including side condensing section or weatherhood when applicable

^B Dependent on unit configuration and options

RV-75 Comparison

- Greenheck Advantage
- Competitor Advantage
- Equal Standing

		Greenheck RV-75	Aaon RN-D	CaptiveAir RTU-4	Daikin DPSA	Trane OAND
COMPETITIVE PRICING			⊖	⚠	⊖	⊖
Supply Airflow	Min CFM	3,750	4,300	2,200	5,000	3,750
	Max CFM	16,000	28,400	15,000	21,000	13,500
Packaged DX Cooling	Min Tons	25	26	22	30	30
	Max Tons	50	70	50	52	54
	Tonnage Options	25, 30, 40, 50	26, 31, 40, 50, 60, 70	22, 25, 30, 40, 50	31, 35, 40, 50, 52	30, 35, 40, 45, 50, 54
	Lead Compressor Type	Inverter	Digital, Inverter	Inverter	Five-Stage, Inverter	Digital, Inverter
	Quantity of Compressors/Circuits	2 / 2 (25-30-tons) 3 / 2 (40-50-tons)	2 / 2	1 / 1 (22-30-tons) 2 / 2 (40-50-tons)	2 / 2 4 / 2	2 / 2 (30-ton) 3 / 2 (35-45-tons) 4 / 2 (50-54-tons)
	Modulating Head Pressure Control (Condensing Fan)	Standard Lead EC Optional All EC	Standard All AC Opt. All EC or VFD	Standard All EC	Standard Lead VFD Optional All VFD	Standard All AC Opt. All EC or VFD
Indirect Gas Furnace	Min MBH	600	600	200	200	300
	Max MBH	1,200	1,200	800	1,125	1,000
	Furnace Size (MBH)	600, 800, 1000, 1,200	600, 900, 1,200	200, 300, 400, 500, 600, 700, 800	200, 400, 600, 800, 1,125	300, 350, 400, 500, 600, 700, 800, 1,000
	High Turndown	Up to 16:1	Up to 20:1	Up to 18:1	Up to 20:1	Up to 20:1
Unit Construction	2" R13 injected foam insulation Std. 2" base insulation	2" R13 injected foam insulation Std. no base insulation (optional)	2" R13 foam board insulation No base insulation	2" R13 injected foam insulation Std. 2" base insulation	2" R13 foam board insulation Std. 2" base insulation	
Unit Coating	Standard Exterior Coating	Standard Exterior Coating	Std. Galvanized Steel Optional Exterior Coating	Standard Exterior Coating	Standard Exterior Coating	
Unit Base Dimensions (bottom connections) (LxWxH - approx. inches)	155 x 98 x 101 ^A	161 x 100 x 102 ^A	118 x 87 x 83 ^A	288 x 97 x 78 ^A	144 x 67 x 92 ^A	
Weight (approx. pounds)	6,500	6,800	6,250	6,900	6,670	
Supply Discharge Option	Bottom or Side	Bottom	Bottom, Side, Top ^B	Bottom, Side, Top	Bottom or Side ^B	
Return Intake Option	Bottom, End, Side ^B	Bottom	Bottom or Side	Bottom or End ^B	Bottom or Side ^B	

^A Not including side condensing section or weatherhood when applicable

^B Dependent on unit configuration and options

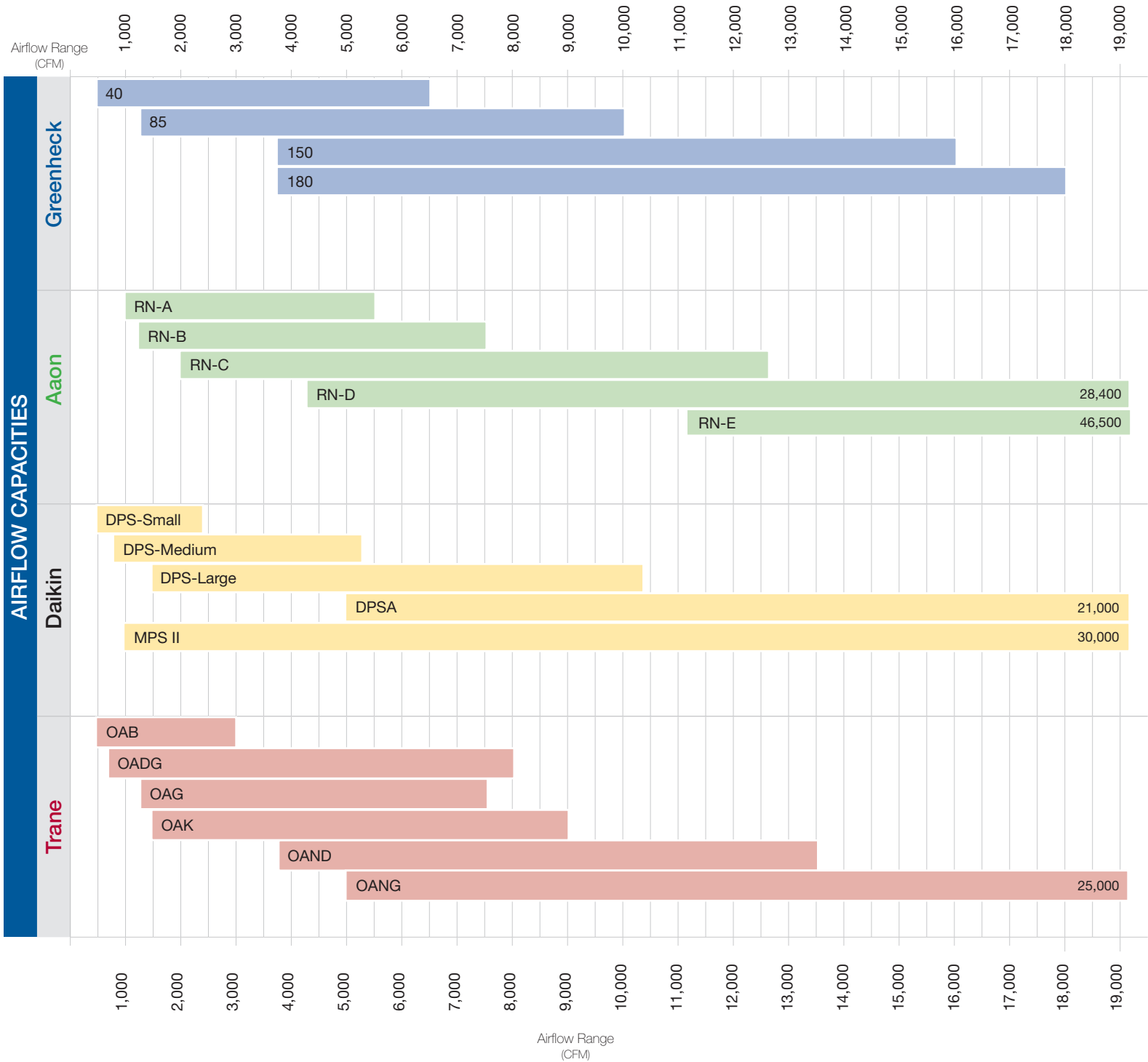
RV-110 Comparison

- Greenheck Advantage
- Competitor Advantage
- Equal Standing

		Greenheck RV-110	Aaon RN-E	CaptiveAire	Daikin MPS II	Trane Horizon OANG
COMPETITIVE PRICING						
Supply Airflow	Min CFM	3,750	11,100	Option not available	1,000	5,000
	Max CFM	18,000	46,500		30,000	25,000
Packaged DX Cooling	Min Tons	30	55		15	40
	Max Tons	70	140		75	80
	Tonnage Options	30, 40, 50, 60, 70	55, 65, 75, 90, 105, 120, 130, 140		15, 17, 20, 26, 30, 35, 40, 50, 61, 70, 75	40, 45, 50, 55, 60, 70, 80
	Lead Compressor Type	Inverter	Inverter		Inverter, Standard	Digital
	Quantity of Compressors/Circuits	3 / 2 (30-tons) 4 / 2 (40-70-tons)	3 / 3		2-4 / 2 (15-26 tons) 3-4 / 2 (30-50 tons) 4-6 / 2 (61-75 tons)	4 / 2 (40-70-tons) 4-6 / 2 (80-tons)
Modulating Head Pressure Control (Condensing Fan)	Standard Lead EC Optional All EC	Standard All AC Optional All EC or VFD	Standard All AC Optional Lead VFD		Standard All AC Optional All EC or VFD	
Indirect Gas Furnace	Min MBH	600	800		240	300
	Max MBH	1,200	2,400		980	1,200
	Furnace Size (MBH)	600, 800, 1,000, 1,200	800, 1,200, 1,600, 2,000, 2,400	240, 300, 400, 480, 500, 600, 800, 980	300, 350, 400, 500, 600, 800, 1,000, 1,200	
	High Turndown	Up to 10:1	Up to 23:1	Up to 8:1	Up to 20:1	
Unit Construction	2" R13 injected foam insulation Std. 2" base insulation	2" R13 injected foam insulation Std. no base insulation (optional)	1" R4 fiberglass insulation Std. 1" base insulation	2" R13 foam board insulation Std. 2" base insulation		
Unit Coating	Standard Exterior Coating	Standard Exterior Coating	Standard Exterior Coating	Standard Exterior Coating		
Unit Base Dimensions (bottom connections) (LxWxH - approx. inches)	185 x 96 x 100 ^A	230 x 142 x 105 ^A	370 x 99 x 76 ^A	182 x 98 x 108 ^A		
Weight (approx. pounds)	7,950	8,400	12,363	9,050		
Supply Discharge Option	Bottom or Side ^B	Bottom	Bottom or Side	Bottom or Side ^B		
Return Intake Option	Bottom or Side ^B	Bottom	Bottom	Bottom or Side ^B		

^A Not including side condensing section or weatherhood when applicable
^B Dependent on unit configuration and options

Supply Airflow Capacities Comparison with Energy Recovery



RVE-40 Comparison

- Greenheck Advantage
- Competitor Advantage
- Equal Standing

		Greenheck RVE-40	Aaon		CaptiveAir RTU - 1/2/3	Daikin		Trane	
			RN-A	RN-B		DPS - Small	DPS - Medium	OAB	OADG
COMPETITIVE PRICING									
Supply Airflow	Min CFM	500	1,000	1,300	No published data available	500	750	500	625
	Max CFM	6,500	5,500	7,500		2,400	6,000	3,000	8,000
Outdoor Airflow	Min CFM	500	1,000	1,300		500	750	500	625
	Max CFM (No Wheel Bypass)	4,400	2,000	3,300		1,500	5,000	3,000	6,750
Packaged DX Cooling	Min Tons	5	6	9		3	7	3	10
	Max Tons	15	10	15		6	15	9	20
	Tonnage Options	5, 7, 10, 12.5, 15	6, 7, 8, 10	9, 11, 13, 15		3, 4, 5, 6	7, 10, 12, 15	3, 4, 5, 6, 7, 8, 9	10, 12, 15, 17, 20
	Lead Compressor Type	Inverter	Two-Stage, Digital, Inverter			Inverter		Digital, Inverter	Digital
	Quantity of Compressors/Circuits	1 / 1	1 / 1	2 / 2		1 / 1		1 / 1	2 / 1
	Modulating Head Pressure Control (Condensing Fan)	Std. Lead EC Opt. All EC	Standard All AC Optional All EC or VFD			Standard All EC		Standard All AC Optional All EC or VFD	
Air-Source Heat Pump	Min Tons	5	6	9	3	7.5	Option not available	10	
	Max Tons	15	10	15	6	15		20	
	Tonnage Options	5, 7.5, 10, 12.5, 15	6, 7, 8, 10	9, 11, 13, 15	3, 4, 5, 6	7, 10, 12, 15		10, 12, 15, 17, 20	
	Lead Compressor Type	Inverter	Digital		Inverter	Inverter		Digital	
	Quantity of Compressors/Circuits	1 / 1 (5-7.5-ton) 2 / 2 (10-15-ton)	1 / 1	2 / 2	1 / 1			2 / 1	
	ASHP Lockout (°F)	10°	0°		0°			0°	
Secondary Heat Options	Electric, Indirect Gas, Hot Water	Electric, Indirect Gas, Hot Water		Electric, Indirect Gas, Hot Water		Electric, Indirect Gas, Hot Water			
Indirect Gas Furnace	Min MBH	100	90	195	80	200	50	50	
	Max MBH	300	210	390	160	400	200	350	
	Furnace Size (MBH)	100, 200, 300	90, 150, 210	195, 292.5, 390	80, 120, 160	200, 300, 400	50, 75, 100, 125, 150, 200	50, 75, 100, 125, 150, 200, 250, 300, 350	
	High Turndown	Up to 16:1	Up to 11:1	Up to 10:1	Up to 5:1	Up to 10:1	Up to 20:1		
Unit Construction	2" R13 injected foam insulation Std. 2" base insulation	2" R13 injected foam insulation Standard no base insulation (optional)		1" R7 injected foam insulation Standard 1" base insulation		2" R13 foam board insulation Standard 2" base insulation			
Unit Coating	Std. Exterior Coating	Standard Exterior Coating		Standard Exterior Coating		Standard Exterior Coating			
Unit Base Dimensions (bottom connections) (LxWxH - approx. inches)	150 x 53 x 59 ^A	116 x 44 x 44 ^A	128 x 59 x 50 ^A	86 x 54 x 41 ^A	111 x 58 x 56 ^A	139 x 52 x 55 ^A	176 x 63 x 69 ^A		
Weight (approx. pounds)	3,400	1,500	2,610	1,600	2,700	2,135	4,835		
Supply Discharge Option	Bottom or Side ^B	Bottom		Bottom		Bottom or Side ^B			
Return Intake Option	Bottom or Side ^B	Bottom		Bottom		Bottom or Side ^B			
Energy Wheel (Material Type)	Polymer or Aluminum	Polymer or Aluminum		Polymer		Polymer or Aluminum			

^A Not including side condensing section or weatherhood when applicable

^B Dependent on unit configuration and options

RVE-85 Comparison

- Greenheck Advantage
- Competitor Advantage
- Equal Standing

		Greenheck RVE-85	Aaon RN-C	CaptiveAire RTU-3 / 4	Daikin DPS - Large	Trane	
						OAG	OAK
COMPETITIVE PRICING			⊖		⊖	⊖	⊖
Supply Airflow	Min CFM	1,250	2,000	No published data available	1,500	1,250	1,500
	Max CFM	10,000	12,600		10,500	7,500	9,000
Outdoor Airflow	Min CFM	1,250	2,000		1,500	1,250	1,500
	Max CFM (No Wheel Bypass)	9,000	6,600		6,500	6,750	9,000
Packaged DX Cooling	Min Tons	15	11		16	10	12
	Max Tons	30	30		28	30	30
	Tonnage Options	15, 17.5, 20, 25, 30	11, 13, 16, 18, 20, 25, 30		16, 18, 20, 25, 28	10, 12, 15, 17, 20, 22, 25, 30	12, 15, 17, 20, 22, 25, 30
	Lead Compressor Type	Inverter	Two-Stage, Digital, Inverter		Inverter	Digital, Inverter	
	Quantity of Compressors/Circuits	1 / 1 (15-17.5 ton) 2 / 1 (20-30-ton)	2 / 2		1 / 1 (16-20 ton) 2 / 1 (25-28 ton)	2 / 2	
	Modulating Head Pressure Control (Condensing Fan)	Standard Lead EC Optional All EC	Standard All AC Opt. All EC or VFD		Standard All EC	Standard All AC Optional All EC or VFD	
Air-Source Heat Pump	Min Tons	15	14		16	Option not available	12
	Max Tons	30	30		20		30
	Tonnage Options	15, 17.5, 20, 25, 30	14, 16, 18, 20, 25, 30		16, 18, 20		12, 15, 17, 20, 22, 25, 30
	Lead Compressor Type	Inverter	Digital		Inverter		Digital, Inverter
	Quantity of Compressors/Circuits	2 / 2	2 / 2	1 or 2	2 / 2		
	ASHP Lockout (°F)	10°	0°	0°	0°		
	Secondary Heat Options	Electric, Indirect Gas Hot Water	Electric, Gas, Hot Water	Electric, Indirect Gas, Hot Water,	Electric, Indirect Gas, Hot Water		
Indirect Gas Furnace	Min MBH	300	270	300	100	150	
	Max MBH	500	540	600	600	800	
	Furnace Size (MBH)	300, 400, 500	270, 405, 540	300, 450, 600	100, 125, 150, 200, 250, 300, 350, 400, 500, 600	150, 200, 250, 300, 350, 400, 500, 600, 700, 800	
	High Turndown	Up to 15:1	Up to 18:1	Up to 10:1	Up to 20:1		
Unit Construction	2" R13 injected foam insulation Std. 2" base insulation	2" R13 injected foam insulation Std. no base insulation (optional)	2" R13 injected foam insulation Std. 2" base insulation	2" R13 foam board insulation Standard 2" base insulation			
Unit Coating	Std. Exterior Coating	Std. Exterior Coating	Std. Exterior Coating	Standard Exterior Coating			
Unit Base Dimensions (bottom connections) (LxWxH - approx. inches)	163 x 68 x 73 ^A	199 x 64 x 59 ^A	206 x 77 x 71 ^A	169 x 74 x 66 ^A	168 x 60 x 81 ^A		
Weight (approx. pounds)	5,100	3,770	4,620	4,546	5,796		
Supply Discharge Option	Bottom or Side ^B	Bottom or End	Bottom or Horizontal	Bottom or Side ^B			
Return Intake Option	Bottom or Side	Bottom, End, Side	Bottom	Bottom or Side ^B			
Energy Wheel (Material Type)	Polymer or Aluminum	Polymer or Aluminum	Polymer	Polymer or Aluminum			

^A Not including side condensing section or weatherhood when applicable

^B Dependent on unit configuration and options

RVE-150 Comparison

- Greenheck Advantage
- Competitor Advantage
- Equal Standing

		Greenheck RVE-150	Aaon RN-D	CaptiveAire RTU-4	Daikin DPSA	Trane OAND
COMPETITIVE PRICING			⊖		⊖	⊖
Supply Airflow	Min CFM	3,750	4,300	No published data available	5,000	3,750
	Max CFM	16,000	28,400		21,000	13,500
Outdoor Airflow	Min CFM	2,400	4,300		No published data	3,750
	Max CFM (No Wheel Bypass)	16,000	12,000		No published data	13,500
Packaged DX Cooling	Min Tons	25	26		30	30
	Max Tons	50	70		52	54
	Tonnage Options	25, 30, 40, 50	26, 31, 40, 50, 60, 70		31, 35, 40, 50, 52	30, 35, 40, 45, 50, 54
	Lead Compressor Type	Inverter	Digital, Inverter		Five-Stage, Inverter	Digital, Inverter
	Quantity of Compressors/Circuits	2 / 2 (25-30-tons) 3 / 2 (40-50-tons)	4 / 4		2 / 2 4 / 2	2 / 2 (30-ton) 3 / 2 (35-45-tons) 4 / 2 (50-54-tons)
Modulating Head Pressure Control (Condensing Fan)	Standard Lead EC Optional All EC	Standard All AC Optional All EC or VFD	Standard Lead VFD Optional All VFD		Standard All AC Optional All EC or VFD	
Indirect Gas Furnace	Min MBH	600	600	No published data available	200	300
	Max MBH	1,200	1,200	1,125	1,000	
	Furnace Size (MBH)	600, 800, 1000, 1,200	600, 900, 1,200	200, 400, 600, 800, 1,125	300, 350, 400, 500, 600, 700, 800, 1,000	
	High Turndown	Up to 16:1	Up to 20:1	Up to 20:1	Up to 20:1	
Unit Construction	2" R13 injected foam insulation Std. 2" base insulation	2" R13 injected foam insulation Std. no base insulation (optional)	2" R13 injected foam insulation Std. 2" base insulation	2" R13 injected foam insulation Std. 2" base insulation	2" R13 foam board insulation Std. 2" base insulation	
Unit Coating	Standard Exterior Coating	Standard Exterior Coating	Standard Exterior Coating	Standard Exterior Coating		
Unit Base Dimensions (bottom connections) (LxWxH - approx. inches)	200 x 98 x 101 ^A	209 x 100 x 102 ^A	460 x 97 x 78 ^A	206 x 67 x 92 ^A		
Weight (approx. pounds)	8,000	8,320	10,500	8,621		
Supply Discharge Option	Bottom or Side	Bottom	Bottom, Right, Left, Top ^B	Bottom or Side ^B		
Return Intake Option	Bottom or Side	Bottom	Bottom, End, Side ^B	Bottom or Side ^B		
Energy Wheel (Material Type)	Polymer or Aluminum	Polymer or Aluminum	Aluminum	Polymer or Aluminum		

^A Not including side condensing section or weatherhood when applicable

^B Dependent on unit configuration and options

RVE-180 Comparison

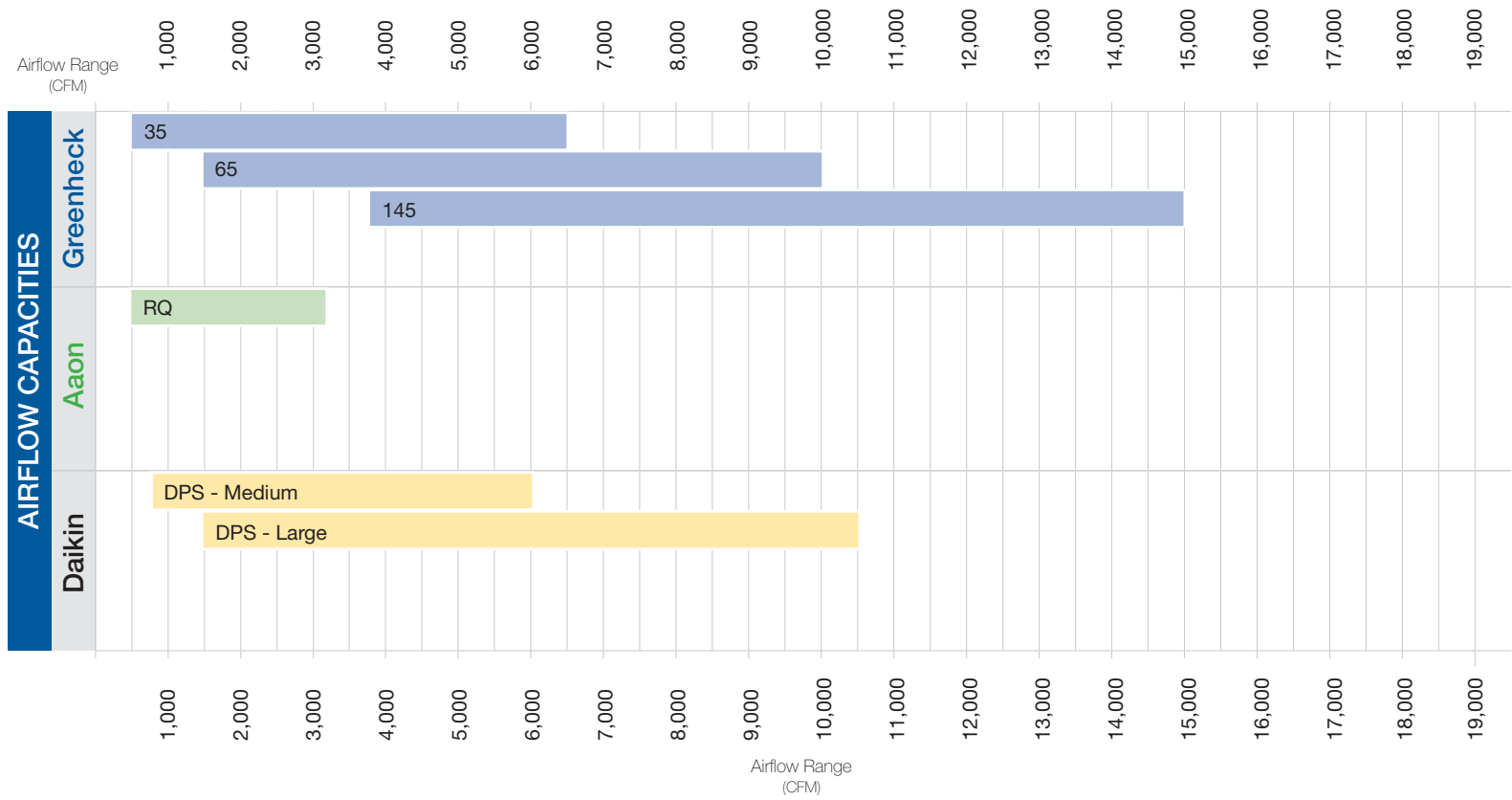
- Greenheck Advantage
- Competitor Advantage
- Equal Standing

		Greenheck RVE-180	Aaon RN-E	CaptiveAire RTU-4	Daikin MPS II	Trane OANG
COMPETITIVE PRICING						
Supply Airflow	Min CFM	3,750	11,100	No published data available	1,000	5,000
	Max CFM	18,000	46,500		30,000	25,000
Outdoor Airflow	Min CFM	3,750	11,100		1,000	5,000
	Max CFM (No Wheel Bypass)	18,000	19,000		11,000	24,000
Packaged DX Cooling	Min Tons	30	55		15	40
	Max Tons	70	140		75	80
	Tonnage Options	30, 40, 50, 60, 70	55, 65, 75, 90, 105, 120, 130, 140		15, 17, 20, 26, 30, 35, 40, 50, 61, 70, 75	40, 45, 50, 55, 60, 70, 80
	Lead Compressor Type	Inverter	Inverter		Standard, Inverter	Digital
	Quantity of Compressors/Circuits	3 / 2 (30-tons) 4 / 2 (40-70-tons)	4 / 2		2 / 6	4 / 2 (40-70-tons) 4-6 / 2 (80-tons)
	Modulating Head Pressure Control (Condensing Fan)	Standard Lead EC Optional All EC	Standard All AC Optional All EC or VFD		Standard All AC Optional Lead VFD	Standard All AC Optional All EC or VFD
Indirect Gas Furnace	Min MBH	600	800		240	300
	Max MBH	1,200	2,400		980	1,200
	Furnace Size (MBH)	600, 800, 1,000, 1,200	800, 1,200, 1,600, 2,000, 2,400		240, 300, 400, 480, 500, 600, 800, 980	300, 350, 400, 500, 600, 800, 1,000, 1,200
	High Turndown	10:1	Up to 23:1		Up to 8:1	Up to 20:1
Unit Construction	2" R13 injected foam insulation Std. 2" base insulation	2" R13 injected foam insulation Std. no base insulation (optional)	1" R4 fiberglass insulation Std. 1" base insulation	2" R13 foam board insulation Std. 2" base insulation		
Unit Coating	Standard Exterior Coating	Standard Exterior Coating	Standard Exterior Coating	Standard Exterior Coating		
Unit Base Dimensions (bottom connections) (LxWxH - approx. inches)	263 x 96 x 100 ^A	317 x 142 x 105 ^A	99 x 336 x 176 ^A	300 x 98 x 108 ^A		
Weight (approx. pounds)	10,450	18,000	13,148	12,510		
Supply Discharge Option	Bottom or Side ^B	Bottom	Bottom or Side ^B	Bottom or Side ^B		
Return Intake Option	Bottom or Side ^B	Bottom	Bottom	Bottom or Side ^B		
Energy Wheel (Material Type)	Polymer or Aluminum	Polymer or Aluminum	Polymer	Polymer or Aluminum		

^A Not including side condensing section or weatherhood when applicable

^B Dependent on unit configuration and options

Supply Airflow Capacities Comparison with Energy Recovery



RVC-35 Comparison

- Greenheck Advantage
- Competitor Advantage
- Equal Standing

		Greenheck RVC-35	Aaon RQ	CaptiveAire RTU	Daikin DPS - Medium	Trane OAB
COMPETITIVE PRICING						
Supply Airflow	Min CFM	500	500	Option not available	750	
	Max CFM	6,500	3,200		6,000	
Outdoor Airflow	Min CFM	500	500		750	
	Max CFM	3,650	1,900		6,000	
Packaged DX Cooling	Min Tons	5	2		7	
	Max Tons	15	6		15	
	Tonnage Options	5, 7, 10, 12.5, 15	2, 3, 4, 5, 6		7, 10, 12, 15	
	Lead Compressor Type	Inverter	Two-Stage, Digital, Inverter		Inverter	
	Quantity of Compressors/Circuits	1 / 1	1 / 1		1 / 1	
	Modulating Head Pressure Control (Condensing Fan)	Standard Lead EC Optional All EC	Standard All AC Optional All EC		Standard All EC	
Air-Source Heat Pump	Min Tons	5	2		7	
	Max Tons	15	6		15	
	Tonnage Options	5, 7.5, 10, 12.5, 15	2, 3, 4, 5, 6		7, 10, 12, 15	
	Lead Compressor Type	Inverter	Two-Stage, Digital		Inverter	
	Quantity of Compressors/Circuits	1 / 1 (5-7.5-ton) 2 / 2 (10-15-ton)	1 / 1	1 / 1		
	ASHP Lockout (°F)	10°	0°	0°		
Secondary Heat Options	Electric, Indirect Gas, Hot Water	Electric, Indirect Gas, Hot Water	Electric, Indirect Gas, Hot Water			
Indirect Gas Furnace	Min MBH	100	60	200		
	Max MBH	300	160	400		
	Furnace Size (MBH)	100, 200, 300	60, 100, 140, 160	200, 300, 400		
	High Turndown	Up to 16:1	Up to 12:1	Up to 10:1		
Unit Construction	2" R13 injected foam insulation Std. 2" base insulation	2" R13 injected foam insulation Std. no base insulation (optional)	1' R7 injected foam insulation Std. 1" base insulation			
Unit Coating	Standard Exterior Coating	Standard Exterior Coating	Standard Exterior Coating			
Unit Base Dimensions (bottom connections) (LxWxH - approx. inches)	181 x 53 x 59 ^A	117 x 44 x 51 ^A	181 x 58 x 57 ^A			
Weight (approx. pounds)	3,800	1,350	3,863			
Supply Discharge Option	Bottom or Side ^B	Bottom or Side	Bottom			
Return Intake Option	Bottom	Bottom or Side	Bottom			
Enthalpy Cores	Material Type	Fiber or Polymer	Polymer	Polymer		
	Core Bypass Option	Yes	Yes	Yes		

^A Not including side condensing section or weatherhood when applicable

^B Dependent on unit configuration and options

RVC-65 Comparison

- Greenheck Advantage
- Competitor Advantage
- Equal Standing

		Greenheck RVC-65	Aaon RN	CaptiveAire RTU	Daikin DPS - Large	Trane OAB
COMPETITIVE PRICING						
Supply Airflow	Min CFM	1,500			1,500	
	Max CFM	10,000			10,500	
Outdoor Airflow	Min CFM	1,500			1,500	
	Max CFM	6,500			7,000	
Packaged DX Cooling	Min Tons	15			16	
	Max Tons	30			28	
	Tonnage Options	15, 17.5, 20, 25, 30			16, 18, 20, 25, 28	
	Lead Compressor Type	Inverter			Inverter	
	Quantity of Compressors/Circuits	1 / 1 (15-17.5-ton) 2 / 1 (20-30-ton)			1 / 1 (16-20 ton) 2 / 1 (25-28 ton)	
	Modulating Head Pressure Control (Condensing Fan)	Standard Lead EC Optional All EC			Standard All EC	
Air-Source Heat Pump	Min Tons	15			16	
	Max Tons	30			20	
	Tonnage Options	15, 17.5, 20, 25, 30			16, 18, 20	
	Lead Compressor Type	Inverter			Inverter	
	Quantity of Compressors/Circuits	2 / 2	Option not available	Option not available	1 / 1	Option not available
	ASHP Lockout (°F)	10°			0°	
Secondary Heat Options	Electric, Indirect Gas, Hot Water			Electric, Indirect Gas, Hot Water		
Indirect Gas Furnace	Min MBH	300			300	
	Max MBH	500			600	
	Furnace Size (MBH)	300, 400, 500			300, 450, 600	
	High Turndown	Up to 15:1			Up to 10:1	
Unit Construction	2" R13 injected foam insulation Std. 2" base insulation			2" R13 injected foam insulation Std. 2" base insulation		
Unit Coating	Standard Exterior Coating			Standard Exterior Coating		
Unit Base Dimensions (bottom connections) (LxWxH - approx. inches)	197 x 68 x 73 ^A			77 x 223 x 71 ^A		
Weight (approx. pounds)	5,675			6,480		
Supply Discharge Option	Bottom or Side ^B			Bottom or Horizontal		
Return Intake Option	Bottom			Bottom		
Enthalpy Cores	Material Type	Fiber or Polymer			Polymer	
	Core Bypass Option	Yes			Yes	

^A Not including side condensing section or weatherhood when applicable

^B Dependent on unit configuration and options

RVC-145 Comparison

- Greenheck Advantage
- Competitor Advantage
- Equal Standing

		Greenheck RVC-145	Aaon RN	CaptiveAire RTU	Daikin DPSA	Trane OAB				
COMPETITIVE PRICING										
Supply Airflow	Min CFM	3,750								
	Max CFM	15,000								
Outdoor Airflow	Min CFM	3,750								
	Max CFM	15,000								
Packaged DX Cooling	Min Tons	30								
	Max Tons	70								
	Tonnage Options	30, 40, 50, 60, 70								
	Lead Compressor Type	Inverter								
	Quantity of Compressors/Circuits	3 / 2 (30-tons) 4 / 2 (40-70-tons)								
	Modulating Head Pressure Control (Condensing Fan)	Standard Lead EC Optional All EC								
Indirect Gas Furnace	Min MBH	600					Option not available	Option not available	Option not available	Option not available
	Max MBH	1,200								
	Furnace Size (MBH)	600, 800, 1,000, 1,200								
	High Turndown	10:1								
	Unit Construction	2" R13 injected foam insulation Std. 2" base insulation								
	Unit Coating	Standard Exterior Coating								
	Unit Base Dimensions (bottom connections) (LxWxH - approx. inches)	309 x 96 x 100 ^A								
	Weight (approx. pounds)	12,000								
	Supply Discharge Option	Bottom or Side ^B								
	Return Intake Option	Bottom or Side								
Enthalpy Cores	Material Type	Polymer								
	Core Bypass Option	Yes								

^A Not including side condensing section or weatherhood when applicable

^B Dependent on unit configuration and options

