

AIR TERMINAL UNITS

Can we factory-mount controls from any controls manufacturer?

Yes, we can mount controls from any manufacturer. However, in rare instances the standard enclosure is too small for large controllers, so there would be additional charges required for an oversized control enclosure.

Does Greenheck offer an extended warranty beyond the standard one year after an order ships?

No, Greenheck's warranty is for one year. If a longer warranty is required for a job, that extended warranty needs to be covered by the Rep firm.

Can you flip a single duct VAV box over from one side to the other?

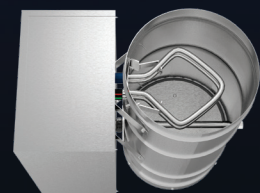
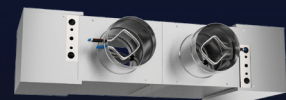
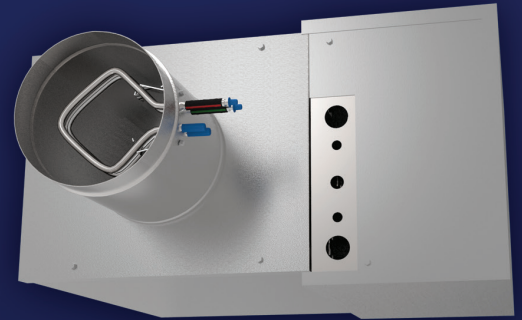
Cooling Only – Yes, you can flip a box so the control panel is on the other side.

Electric Heat – Yes, you can flip a box so the control panel is on the other side.

Hot Water Heat – It depends. You can flip a box with a one-row or two-row coil without any issues. Three- and four-row coils are handing specific so flipping these boxes could cause a decrease in coil performance.

What are the recommended CFMs needed for optimal performance of an ATU with electric heat?

Electric heat boxes require a minimum of 70 cfm per kW. This prevents any nuisance tripping of the high limit switches.



What is the difference between the RPM control and VCU control for an ECM motor? When would I select one over the other?

A VCU ECM is controlled by a manual potentiometer and is typically used on series/constant volume fan powered boxes. An RPM ECM is controlled by an input signal from a DDC controller and is typically used on a parallel/variable volume fan box.

Does a single duct box with electric heat always require an integral sound attenuator?

Yes, due to our UL listing the electric heat must be a certain distance away from the damper assembly. We accomplish this by always including an integral sound attenuator to separate the heater from the damper assembly.

What is the minimum airflow of a VAV box?

Controllable minimum CFM of a VAV box is not based off the construction of the VAV box, but of the sensitivity of the pressure transducer inside the DDC controller. The better controller you have the lower the CFM you can control.

Are your Air Terminal Units AHRI certified?

We began our participation in the AHRI certification program for Air Terminal Units in 1986 and have continued uninterrupted to the present. Therefore, we have a track record of over 35 years of AHRI certified Air Terminal Units.

Why is insulation required in an Air Terminal Unit?

Insulation helps in preventing condensation as well as reducing sound.

What is the maximum static pressure an Air Terminal Unit can handle?

Our Air Terminal Units are manufactured to handle an inlet static pressure up to 7 in. wg.

How much straight duct should you have before the inlet airflow sensor?

It is recommended that you have three duct diameters of straight duct before the inlet of the box. This helps ensure laminar airflow which is best for any airflow sensor.

What happens if I cannot get three straight duct diameters before the inlet of the box?

If you cannot get three straight duct diameters before the inlet of the box, it is best to use a field calibration at 1 inch differential pressure on the inlet sensor to obtain a field-generated K factor for your controller. This field-generated K factor should be more accurate than the factory-provided K factor due to the adverse field conditions of the inlet.

Do your Air Terminal Units have a mechanical damper stop?

Yes, our inlet tube incorporates a mechanical damper stop that prevents over stroking of the damper.

