



DC-5

AMPLIFY™
BY GREENHECK

4.3 TO 7-FOOT FAN DIAMETERS

Elevated Engineering™

With its sleek aerodynamic design, AMPLIFY™ DC-5 is a stylish and versatile overhead fan that creates an impact in any environment. Powerful yet quiet, its attractive five-blade design in 4.3 to 7-foot fan diameters enhances occupant comfort while complementing the interior design of any small commercial or institutional space. With its advanced direct drive motor and VFD, the high-performance AMPLIFY™ DC-5 provides reliable operation and cost savings for years to come.

DIAMETER

- Fan diameters between 4.3 - 7 feet

AIRFLOW & COOLING

- Airflow range up to 15,108 cfm
- Cooling effect up to 7°F

MOTOR & VOLTAGE

- 1/10 hp, direct drive motor
- Reversible operation
- 115V/1-phase

MOUNTING OPTIONS

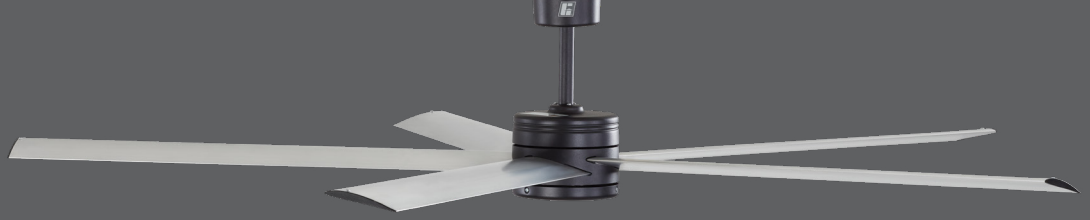
- Fan-rated junction box

WARRANTY

- 10-year mechanical
- 3-year electrical

PRIMARY APPLICATIONS

Office Spaces | Education Facilities | Retail Stores | Restaurants and Bars
Fitness Centers | Hotels | Multifamily Housing



STANDARD FEATURES

PLUG-AND-PLAY WIRING



Factory-installed wiring with plug-and-play connectors for all major electrical connections including:

- Supply wiring to the VFD and motor
- Communication wiring to fan controller

UNIVERSAL CEILING MOUNT



Designed to mount to a fan-rated junction box (provided by others) for maximum installation flexibility. Universal mount also includes a pivoting ball joint to accommodate any ceiling pitch.

DIRECT DRIVE MOTOR & VFD



Lightweight, direct drive motor is up to 20% more efficient and 10 dBA quieter than traditional motors. Factory-mounted and programmed VFD reduces installation time by eliminating complicated programming in the field.

AIRFOILS & WINGLETS



Aluminum airfoils are designed to maximize airflow, boost efficiency, and optimize coverage area. Airfoils are available in mill, powder-coat, woodgrain, or anodized finishes. Winglets are designed to reduce fan noise.

ADVANCED SAFETY FEATURES



Factory-installed multipoint, redundant mechanical safety systems ensure proper function and peace of mind. Smart electronic safety features include:

- Over-voltage, over-current and over-temperature
- Enable/disable contacts for remote fan lock-out

ROBUST COMMUNICATIONS



VFDs are designed for Modbus RTU communication with control devices for signal reliability and ease of integration. All fans also include 100 ft of shielded CAT-5e cable to simplify controls installation.

PERFORMANCE DATA

FAN SIZE (ft)	MAX AIRFLOW (CFM)	MAX COVERAGE AREA (ft ²)	MAX RPM	MOTOR SIZE (HP)	SOUND (dBA)	WEIGHT* (lbs)
4.3	6,401	1,000	200	1/10	34	23
5	9,282	1,600	197	1/10	39	24
6	12,660	2,600	165	1/10	39	26
7	15,108	3,200	135	1/10	35	28

*Weight does not include accessories or optional features.



UL/cUL 507
Listed for Electrical
File no. E504380