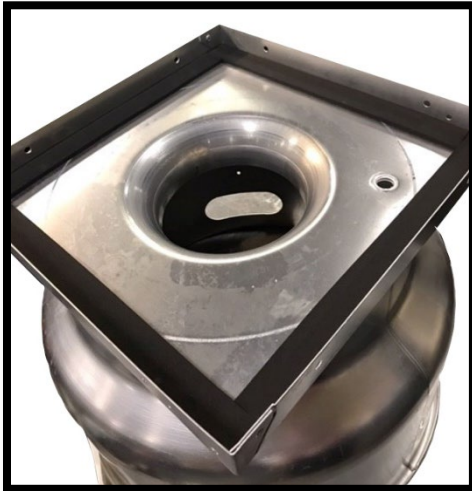


NEW ship loose accessories available on models G/GB and CUE/CUBE

What's new in CAPS® 4.35

Ship Loose Curb Seal

Curb seal (high temperature and foam) is now available as a ship loose option on all G/GB and CUE/CUBE fans. The curb seal will ship in the fan motor compartment. The factory-applied curb seal will remain available.



Factory-applied foam curb seal



Field-applied foam curb seal located in motor compartment

Ship Loose Clean-Out Port

The Clean-Out Port accessory is located on the fan windband and allows direct access to the wheel through a 4-inch diameter hole. When the plug is removed, the wheel can be easily cleaned by spraying through the hole.

A field-installed Clean-Out Port is now a selectable accessory on CUE/CUBE fans. This kit provides an easy way to field install a Clean-Out Port. This kit includes a mounting plate, gasketed plug, caulk for sealing, and necessary fasteners. Some tools are required for install – see [Installation, Operation and Maintenance Manual](#) for details. The factory-installed Clean-Out Port will continue to be available for selection.



Factory-installed Clean-Out Port



Field-installed Clean-Out Port kit