

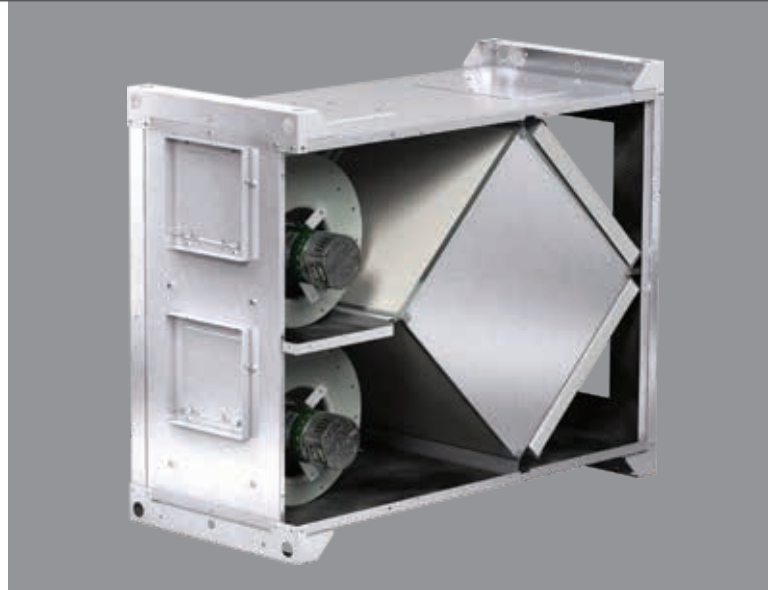
# Model MiniCore

## Energy Recovery Preconditioner

**For representative use only  
Confidential Information:  
Not for distribution.**

The MiniCore is an energy recovery ventilator that utilizes a total energy core to provide preconditioned fresh outdoor air for commercial applications ranging from 150 to 1,000 cfm.

The addition of the MiniCore positions Greenheck and our sales partners as a resource of both rotary energy wheels and energy core technologies. This allows Greenheck to provide customers with energy recovery solutions regardless of the preferred technology.



MiniCore-5	MiniCore-10
150-700 cfm	500-1000 cfm
AHRI Certified Total Energy Core	
Vari-Green® Motors	
Indoor Mounting	

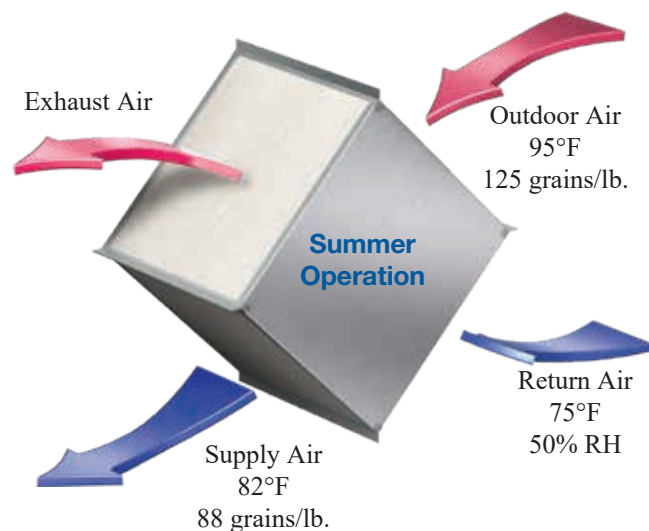
## Energy Core Technology

The total energy core is constructed of a fiber membrane, layered in a cross-flow corrugated structure. The core is designed to separate the supply and exhaust air, ensuring that only fresh air is introduced into the indoor space.

The special material provides superior heat-transfer and moisture permeability. This provides highly efficient total energy recovery when the supply and exhaust air cross within the total energy core.

By applying this total energy core technology to an application, the MiniCore reduces the load on the building's air conditioning and heating systems by up to 3 tons per unit while adhering to ASHRAE 62.1-2016 and 2018 IECC energy requirements.

The total energy core is proven technology that is widely accepted by consulting engineers, contractors and owners.



**Energy Recovery Ventilator**

# Model MiniCore

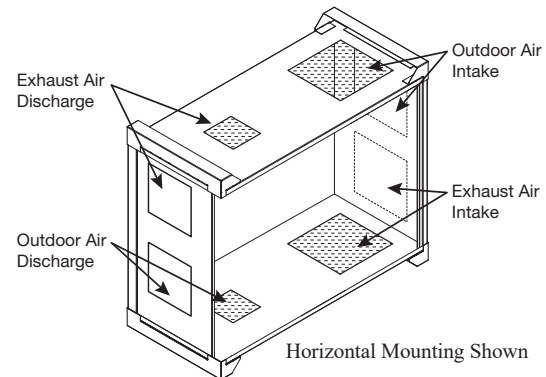
Features	Function	Benefits
<b>Total Energy Recovery</b>	Precool and dehumidify outdoor air in the summer. Preheat outdoor air in the winter.	<ul style="list-style-type: none"> <li>• Lower first costs on heating and cooling equipment</li> <li>• Annual energy savings</li> <li>• Conforming with ASHRAE 90.1-2016 and 2018 IECC</li> </ul>
<b>Configuration and Installation Flexibility</b>	Field-configurable intake and discharge connections	<ul style="list-style-type: none"> <li>• Simplifies installation</li> <li>• Easily integrates into various duct configurations</li> </ul>
<b>Vari-Green® Motors</b>	Electronically commutated (EC) motor with integral variable speed capabilities	<ul style="list-style-type: none"> <li>• Energy savings with highly efficient motor technologies</li> <li>• Straight-forward system balancing capabilities</li> </ul>

## Configurable Intake and Discharge Locations

Designed for indoor installations with multiple mounting arrangements (horizontal or vertical) and configurable intake and discharge connections, this model can easily configure on-site, to various applications such as schools, dormitories, offices, nursing homes and restrooms.

Available Intake/Discharge Locations				
Option	Bottom	Top	Side	*End
Outdoor Air Intake		X		X
Supply Air Discharge	X			X
Return Air Intake	X			X
Exhaust Air Discharge		X		X

\*Standard



## Competitive Comparison

	Greenheck MiniCore-5	RenewAire EV450IN	Greenheck MiniCore-10	RenewAire HE1XIN
Airflow	150-750 cfm	200-540 cfm	500-1000 cfm	250-925 cfm
Effectiveness	60 - 70%	60 - 70%	60 - 70%	60 - 70%
Total Energy Core	✓	✓	✓	✓
EC Motors	✓	✓	✓	✓
Dual Motors*	✓	-	✓	-
Frost Control	✓	-	✓	-
Affordability	\$	\$\$	\$	\$\$

\*The EV450 utilizes a single motor with shafts that connect the supply and exhaust fans. However, the MiniCore utilizes independently adjustable motors providing the customer with true airflow balancing capabilities.



**Competitive information  
for representative use only**