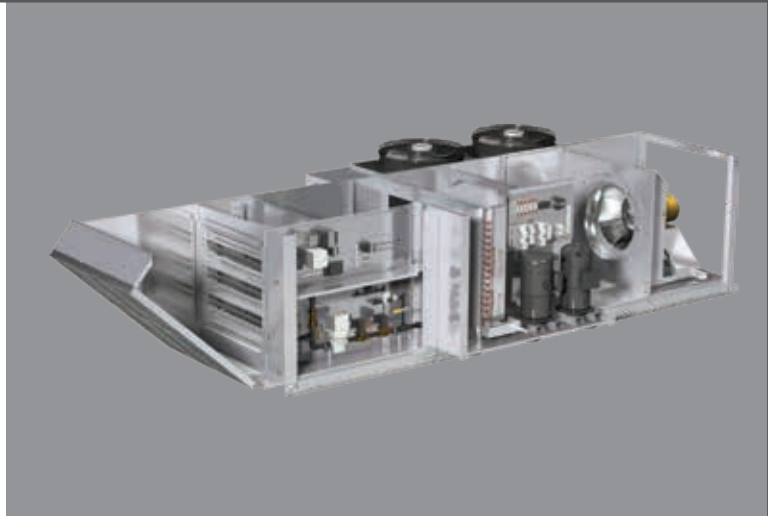


Packaged DX Make-Up Air

Models DGX, IGX and MSX

- 800 - 7,500 cfm
- 2.5 - 16 tons
- Variable air volume (VAV) optional
- Low sound condensing fans
- Standard scroll or digital scroll option
- Belt-driven or direct drive supply fan options
- 15-day quick build optional

The enhanced packaged direct expansion (PDX) cooling offering for models DGX, IGX and MSX further expand Greenheck's already diverse make-up air product line. This PDX offering is designed to provide a cost-effective, sensible cooling option for make-up air applications ranging from 2.5 to 16 tons.



Sensible Cooling Advantages

Providing unconditioned make-up air can create uncomfortable work environments during summer months. Although providing conditioned make-up air improves employee retention and increases space comfort levels, attempting to fully dehumidify a space can be challenging and costly. The increased tonnage required to dehumidify a space will significantly increase equipment first cost as well as annual operating costs. The packaged DX system for models DGX, IGX, and MSX offer 65°-75°F supply air temperatures, providing a cost-effective cooling option for numerous make-up air applications.

Housing	Airflow	Tonnage
H-12	800 - 3,200	2.5 - 8
H-22	2,300 - 5,100	7 - 10
H-32	3,400 - 7,500	10 - 16

Packaged DX Features

Optional Mixed Flow: Greenheck's direct drive, mixed flow plenum supply fans provide a more efficient operation at lower sound levels when compared to a traditional belt-driven forward-curved supply fan. Outlet sound is typically reduced 6-8 decibels, which is equivalent to a perceived sound reduction of up to 50%! The direct drive arrangement also improves ease of maintenance and simplifies air balancing in the field as every unit is provided with a factory-mounted VFD.

Optional Digital Scroll Compressor: The digital scroll compressor modulates the DX cooling system to match the required load for precise temperature control while increasing operational efficiency. Additionally, when using the digital scroll compressor, a standard electronically commutated motor is provided, further increasing energy savings.

Standard Low Sound Condensing Fans: Greenheck's low sound condenser fans offer an average sound power reduction of 5-8 decibels when compared to standard condenser fans, resulting in a perceived sound level reduction of up to 50%!

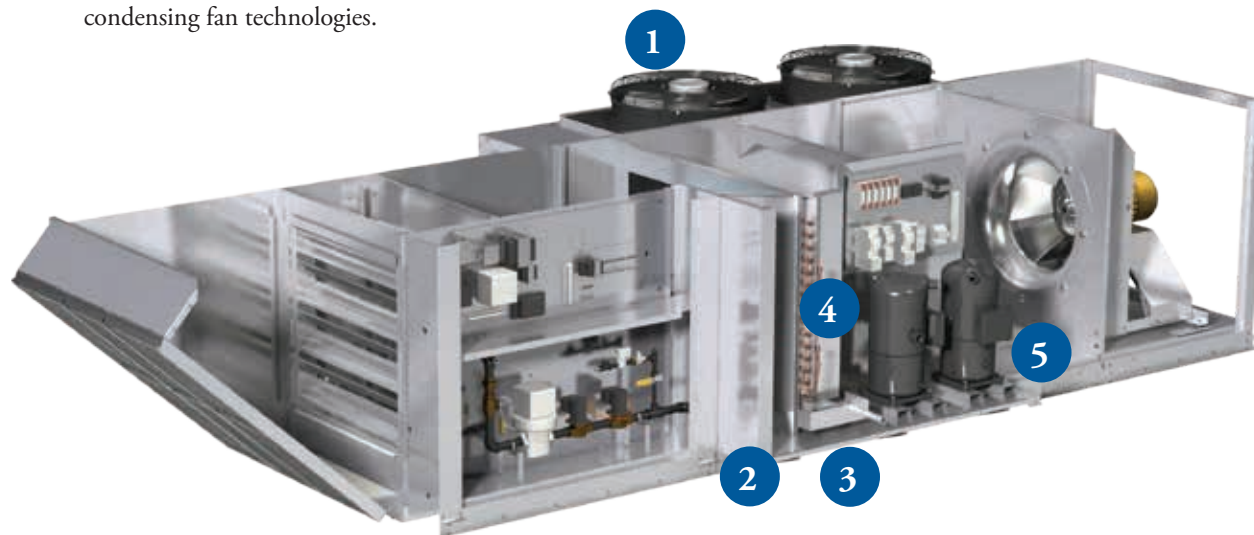


Packaged DX Make-Up Air

Packaged DX Make-Up Air Product Features

1 Condensing Fans
Standard direct drive condensing fans with serrated blades provide increased efficiency and reduced sound levels over traditional condensing fan technologies.

2 Service Access
Standard lift-off or optional hinged panels provide easy access to refrigeration components. Components are mounted in an isolated compartment to allow service without affecting airflow.



3 Drain Pan
The evaporator coil is mounted on an insulated double-sloped stainless steel drain pan.

4 Condenser and Evaporator Coils
Copper tubes are mechanically expanded in aluminum fins. Optional ElectroFin® E-Coating on coil is available for added corrosion resistance.

5 Compressors
Hermetically sealed scroll compressors are mounted on neoprene isolators to minimize noise and vibration transmission. An optional variable capacity compressor is available for the lead circuit.

Model Number Code

The model number code is designed to completely identify the unit. The correct code letters must be specified to designate the configurations and size.

