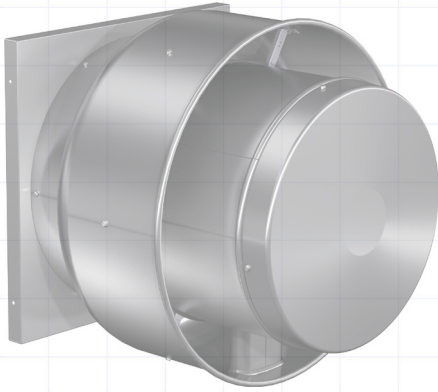


# PRV Fast Pass Program

## Beat the competition



### Leadtime

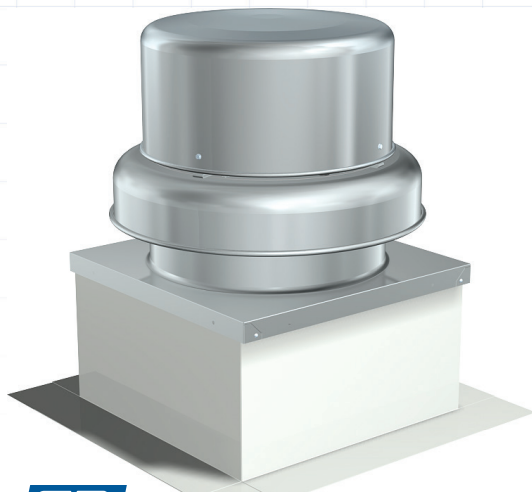
With Fast Pass there is a shorter guaranteed leadtime vs standard

### Money

Save money! Standard multiplier - no premiums

### Easy

Fast Pass question on the sizing tab, shows only Fast Pass options/accessories



Fast Pass Fan Selection		
Qualifying Fast Pass Options	CUBE/CUE	GB/G
<b>Construction Features</b>		
Seismic Rated	✓	✓
High Wind Rated	✓	✓
Birdscreen	✓	✓
Windband Extension	✓	N/A
<b>Motor Features</b>		
UL 705	✓	✓
UL 705- Grease (Formerly UL 762)	✓	N/A
Spare Belts	✓	✓
VG Motors	✓	✓
All VG Controls	✓	✓
115/208/230 V single phase, ODP, std. efficiency motors, certain HP restrictions apply	✓	✓
208/230/460 V three phase, ODP, std. efficiency motors, certain HP restrictions apply	✓	✓
<b>Accessories</b>		
Sidewall Mount	✓	N/A
Wall Grille	✓	N/A
Wall Bracket	✓	N/A
WD Damper (galvanized only)	✓	✓
Curbs	✓	✓
Adapter/Reducers	✓	✓
Hinged Curb Cap	✓	✓
Hinged Base	✓	-
Grease Containment	✓	N/A
Performance Baffle	✓	✓
Heat Baffle	✓	N/A
Clean Out Port	✓	N/A
High Temp Seal	✓	N/A
Disconnect Switch NEMA-1 and 3R (CUBE/CUE only) toggle no overload protection	✓	✓

# Selecting a Fast Pass model in CAPS

On the sizing tab, enter your performance information. Once you select your fan size, the Fast Pass box in the upper right corner will indicate if this selection is available in the Fast Pass Program. You can also see it in the sizing grid to the far right.

Select Fast Pass YES in the advanced inputs and only the Fast Pass options/accessories will be available in the configuration tab.

When you navigate to the configuration tab to select additional construction options, motor options, or accessories, you will notice the same indication box in the upper right. If an option is not available with the Fast Pass Program, it will be specifically outlined in the sales bill.

Model: CUBE-220-15  QD / Stock **Fast Pass Yes** Kitchen Pas

Model Sizing Fan Curves Configuration SDRs / Notes AMCA Shipping Drawings

**Basic inputs (required)**

Volume (CFM) 6,504 Airstream Temp. (F) 70 Drive Loss Low  
 External SP (in. wg) 0.25 Elevation (ft) 702

**Advanced inputs (optional)**

Drive Type Any Performance Baffle No Efficiency Code Req. No  
 Sidewall Mounted No Allow Motor S.F. Yes  
 Grease Exh. Required None Relaxed Constraints No  
 Spark Resistance None Static Pressure Corrections No

**Fast Pass Yes**  
Kitchen Pass No

Operating cost... Customize grid... Show invalid sizes Show available

Model Name	Damper Width (in.)	Damper Length (in.)	Base Fan Weight (lb)	Wheel Diameter (in.)	Inlet dBA (dB)	Inlet Sones	Best Lead Time	Fast Pass Available	Kitchen Pass Available
CUBE-220	24	24	138	24.5	71	19.9	1 Day	Yes	Yes
CUBE-220HP	24	24	146	24.5	75	25	1 Day	Yes	Yes

Model: CUBE-220-15 Best Available 1 Day **Fast Pass No**

Model Sizing Fan Curves Configuration SDRs / Notes AMCA Shipping Drawings

Construction Motor Accessories

**Electrical Accessories**

Disconnect Switch Yes... Motor Starter No Wiring Pigtail No

**Fan Accessories**

Sidewall Mounting No Hinge Latch No Tie Down Points No  
 Mount Type No Curb Seal No Extended Lube Lines No  
 Wall Thickness No Grease Containment None Aluminum Rub Ring No  
 Roof Curb No Curb Cap Adapter No Wall Grille No

**Product information grid**

Description	List Price (U...)	Best Available	Fast Pass	Kit
UL/cUL 705 Listed - "Power Ventilators" Switch, NEMA-1 (PN:N1TSNO-3-30), Toggle, ...	-	-	-	-
Junction Box Mounted & Wired	-	-	-	-
<b>Curb Extension-Galv., GPE-34-G12, Tray</b>	653	1 Day	No	-

All qualifying Fast Pass fans can be easily identified on the job summary page. Any non-Fast Pass items will be subject to the standard delivery time which can vary based on order volume. If you have both Fast Pass and non-Fast Pass items on an order, the order must be split to ensure the Fast Pass items are shipped earlier.

