

Inline & Roof-Mounted  
VFD Options



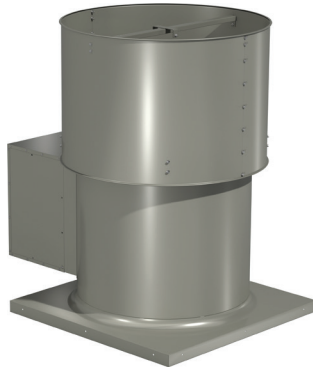
Model	ABB ACH580	ABB ACH180	ABB ACS255	ABB ACS255	Danfoss FC102	Danfoss FC102	
<b>Features</b>							
Enclosure	NEMA-1	NEMA-1		NEMA-1	NEMA-4X	NEMA-1	NEMA-3R
Voltage (1-phase)*	N/A	N/A		110-120V	110-120V	N/A	N/A
Voltage (3-phase)	200-240V, 380-480V, 500-600V	200-240V	380-480V	500-600V	200-240V, 380-480V, 500-600V	200-240V, 380-480V, 500-600V	200-240V, 380-480V, 500-600V
HP range <small>(shows selectable range in CAPS)</small>	1/3 - 30	1 - 15	2 - 15	1/3 - 15	1/3 - 15	1/3 - 30	1/3 - 30
<b>Communication</b>							
BACnet® IP	No	No	No	No	No	No	No
BACnet MSTP	Yes	Yes	No	No	Yes	Yes	Yes
MODBUS RTU	Yes	Yes	Yes	Yes	Yes	Yes	Yes
<b>Supported Motor Type</b>							
Induction	Yes	Yes	Yes	Yes	Yes	Yes	Yes
<b>Special Features</b>							
Disconnect	No	No	No	Yes	No	No	Yes
10 VDC Reference Voltage	Yes (10 mA)	Yes (10 mA)	Yes (10 mA)	Yes (10 mA)	Yes (15 mA)	Yes (15 mA)	Yes (15 mA)
24 VDC Power Supply	Yes (250 mA)	Yes (200 mA)	Yes (100 mA)	Yes (100 mA)	Yes (200 mA)	Yes (200 mA)	Yes (200 mA)
Fuse Overload	No	No	No	No	Yes	Yes	Yes
Integrated Display	Yes	Yes	Yes	Yes	Yes	Yes	Yes
Bluetooth (wireless)	No	No	No	No	No	No	No
Bypass	No	No	No	No	No	No	No
<b>Inputs</b>							
Analog	2 (Current or voltage)	2 (Current or voltage)	2 (Programmable analog or digital) Current or voltage if programmed analog	2 (Programmable analog or digital) Current or voltage if programmed analog	2 (Current or voltage)	2 (Current or voltage)	
Digital	6	5	2 (Dedicated) 3-4 if analog input are programmed for digital	2 (Dedicated) 3-4 if analog input are programmed for digital	4 (Dedicated) 2 (Programmable digital input or digital output)	4 (Dedicated) 2 (Programmable digital input or digital output)	
<b>Outputs</b>							
Analog	2 (AO1 current or voltage, AO2 current)	1 (Current)	1 (Programmable analog or digital)	1 (Programmable analog or digital)	1 (Current or voltage)	1 (Current or voltage)	
Digital	0	1			2 (Dedicated) 3-4 if digital inputs are programmed for digital output	2 (Dedicated) 3-4 if digital inputs are programmed for digital output	
Relay	3	1	1	1	2	2	
Operating Temperature	5°F to 122°F (-15°C to 50°C)	14°F to 122°F (-10°C to 50°C)	14°F to 122°F (-10°C to 50°C)	14°F to 104°F (-10°C to 40°C)	-13°F to 122°F (-25°C to 50°C)	-13°F to 122°F (-25°C to 50°C)	
Relative Cost	High	Low	Low	Medium	Low	High	

Not all variations of these manufacturers' models are available through Greenheck.

## Variable Frequency Drives (VFD) Availability

### Roof-Mounted Models

TAUB



TAUB-CA

AX Upblast

QEI Upblast

QEID Upblast



### Inline Models

AX



QEI

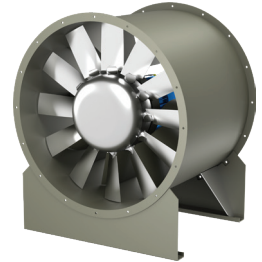
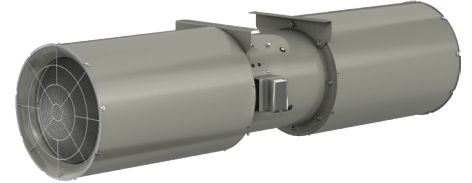
QEID

GJX

TBI-CA / FS

VAB

VAD



#### VFD with controls

##### For self-contained control system:

- Remote dial, set speed or adjustable
- Constant pressure
- Constant airflow

Components signal VFD that maintains programmed set point.

#### VFDs NOT available with:

- Explosion proof motors
- Horsepower (HP) over 30 - Amp capacity dependent, varies with HP and voltage
- Vari-Green® (VG) motor types
- Special Design Request (SDR) motors

