

Greenheck is the **single source** that delivers all of the air movement, conditioning and control equipment needed for **warehouse and distribution center ventilation systems.**

We make it easy to specify integrated systems that:

- Create a safe and productive environment for employees
- Maximize energy efficiency
- Reduce initial equipment and installation costs

Let Greenheck help you with the logistics on your next ventilation project with our full line of products.



Achieve your potential.

Selection Tools to Help You

In addition to the complete product line, Greenheck supplies many tools that make these products easier than ever to specify: **eCAPS® our online product selection program**, our eCAPS® Bridge to Revit® add-in that links eCAPS® directly to the AutoDesk Revit® program, 3-D models and more—all backed by our unequalled customer service.



www.greenheck.com/resources/building-types/warehouses



HVAC University Learning Center

Driving Ventilation Knowledge™



Delivering Warehouse Ventilation Solutions to You



Delivering the Total Package in Warehouse Ventilation Equipment

A warehouse is not your typical building — large doors and loading bays that are often open in any weather; gas-powered vehicles operating inside; very high ceilings; few walls; and the need for clean, comfortable office spaces. **Moving, clarifying and treating air requires a well-integrated, multifaceted ventilation system.**

Featured Products

Summer Ventilation

Greenheck's industry leading supply fans, exhaust fans, louvers and dampers provide a complete solution for efficiently ventilating any warehouse or distribution center.



AER

Space Heating

Model DGX direct gas-fired make-up air units provide cost effective, highly efficient heating by utilizing 100% outside air and 80/20 recirculating configurations to fit the needs of various distribution center designs.



DGX

Air Circulation

HVLS fans are ideal for destratification, comfort cooling and condensation prevention in large industrial spaces.



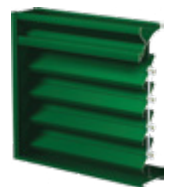
DS-6

Smoke Exhaust

A variety of high-temperature exhaust fans with UL Power Ventilator for Smoke Control listings, and various louver and damper models, are available to meet smoke exhaust application requirements.



RBUMO



EAH-690



- | | | | |
|------------------------------------|---------------------------------------|----------------------------------|---|
| 1 Centrifugal Exhaust Fan | 5 Hooded Rooftop Propeller Fan | 8 Sidewall Propeller Fan | 11 Portable Mancooler Fan |
| 2 Make-up Air Unit | 6 Hazardous Fume Exhaust Fan | 9 Dock Fan | 12 Dedicated Outdoor Air System (DOAS) |
| 3 High Volume Low Speed Fan | 7 Damper | 10 Operable Intake Louver | |
| 4 Upblast Exhaust Fan | | | |

